

# Product Catalogue

Reliable connections –  
worldwide!



Couplings and Adaptors

TC – Typ 2A Coupling .....	8-9
SC – Typ 2B Coupling.....	10-11
LC – Typ 2B Coupling.....	12-13
BC – Bushes .....	14-15
SCW – Typ 2B – extra wide / 300 mm .....	16-17
LCW – Typ 2B – extra wide / 300 mm .....	18-19
MAGNUM – Typ 2B / 370 mm wide .....	20-21
WRC – Typ 2B – open Version / 190 mm wide .....	22-23
MWRC – Typ 2B – open Version / 370 mm wide .....	24-25
FlexPack – FlexPack & FlexPack Plus .....	26-27
FR – Flexring .....	28-29
2B1 – Typ 2B – Universal Coupling .....	30-31
IA – Inside-/Outside-Adaptor .....	32-33
ICP – Pushfit Internal Coupling.....	34-35
IC – ICON Internal Coupling .....	36-37
AC – Adaptor Coupling.....	38-39
AR – Adaptor Coupling.....	40
PRX – Proflex .....	41
DC/PC – Drainage Coupling.....	42-43

Lateral Connections

FA-ST – for clay pipes.....	44
FA-UNI – for multiple pipes, universal .....	45
FA-B – for concrete pipes.....	46-47
TA – Saddle for thin walled pipes .....	48
FA-KG – for concrete pipes.....	49
PA – Universal for ribbed pipes .....	50-51

Articles for Clay Pipes

RSR – RS- Ringe.....	72
ÜGR – ÜG-Ring.....	73
PR – PR-Ring .....	74
ÜR – Ü-Ring.....	75
BR – B-Ring.....	75

Articles for all Pipe Systems

DTP – Drain Test Plug.....	76
GM – Lubricant .....	77
C – End Caps.....	78
AKR – Noise Reduction Ring.....	79
PDCCTV – Access Point .....	80
DTD – Drain Dye.....	81

Pipe Seals

L965 Insitu – for ribbed pipes.....	52
FF150 – for various pipe connections .....	53
LSK 960 – for smooth-walled pipes on concrete .....	54
LM 20/60 – for clay pipes.....	55
LM 50/100/150 – for smooth-walled pipes .....	56-57
FRK – Puddle Flanges .....	58-59
DS – Drain Seal.....	60-61
GK – Ring Seal.....	62-63
PD – Compact-Seal.....	64-65
PD-HY – Pipe Seal – Hybrid.....	66-67
PD-Senso – Pipe Seal – Senso.....	68-69
PD-ZWR – Compact-Seal – Layered Ring Version .....	70-71
SB – Clamp bands.....	82
ZB – Accessories.....	83

Plumbing

PT – Plumbing Tees EPDM & PVC .....	84
PE – Plumbing Elbows EPDM & PVC .....	84
FT – Flexible Qwick Trap .....	85
FPP – Multi Surface Repair Patch .....	86
FPW – Pow-R Wrap .....	87
NRV – Retrofit Non-Return Valve.....	88
F – Air Admittance Valves.....	89
PVC – PVC Drainage Coupling .....	90-91
PVC – PVC Adaptor Coupling .....	92-93

Technical Data

Lateral connections comparison table.....	94
Pipe dimensions table.....	95
Material – Elastomer .....	96
Material – Stainless Steel .....	96
Standards & Accreditations.....	97
Performance... ..	97

General Information

Terms and Conditions .....	98
Calculator.....	7

## Couplings and Adaptors



Coupling  
Typ 2A / TC  
page 8-9



Coupling  
Typ 2B / SC  
page 10-11



Coupling  
Typ 2B / SCW  
page 16-17



Coupling  
Typ 2B / LC  
page 12-13



Coupling  
Typ 2B / MAGNUM  
page 20-21



Coupling  
Typ 2B / LCW  
page 18-19



Coupling  
WRC & MWRC  
page 22-25



Coupling  
2B1 ALL-IN-ONE  
page 30-31



Inside-/ Outside-  
Adaptor IA  
page 32-33



Internal Coupling  
Pushfit ICP  
page 34-35



Internal Coupling  
ICON  
page 36-37



Adaptor Coupling  
AC / AR  
page 38-40



Drainage Coupling  
DC & PC  
page 42-43



Bushes  
BC  
page 14-15



FlexPack &  
FlexPackPlus  
page 26-27



Flexring  
FR  
page 28-29

## Lateral Connections



Connections  
FA-B  
page 46-47



Connections  
FA-UNI  
page 45



Connections  
FA-ST  
page 44



Universal Saddle  
PA  
page 50-51



Connections  
FA-KG  
page 49



Connections  
TA  
page 48

## Articles for Clay Pipes



Ring  
ÜR  
page 75



Ring  
RSR  
page 72



Ring  
BR  
page 75



Ring  
ÜGR  
page 73

## Articles for all Pipe Systems



Drain Test Plug  
DTP  
page 76



Access Point  
PDCCTV  
page 80



End Cap  
C  
page 78



Drain Seal  
DS  
page 60-61



Noise Reduction Ring  
AKR  
page 79



Lubricant  
GM  
page 77



Drain Dye  
DTD  
page 81



Clamp Bands  
page 82

## Pipe Seals



Pipe Seal  
L965 Insitu  
page 52



Pipe Seal  
LSK  
page 54



Pipe Seal  
FF150  
page 53



Pipe Seal  
LM 20/50/60/100/150  
page 55-57



Puddle Flanges  
FRK  
page 58-59



Ring Seal  
GK  
page 62-63



Compact Seal  
PD 3 bar  
page 64-65



Compact Seal  
Senso PD-S  
page 68-69



Compact Seal  
PD 5 bar  
page 64-65



Compact Seal  
Hybrid PD-HY  
page 66-67



Compact Seal  
PD ZWR-System  
page 70-71

## Plumbing



Plumbing Tees  
PT  
page 84



Plumbing Elbows  
PE  
page 84



Quick Trap  
FT  
page 85



Repair Patch  
FPP  
page 86



Pow-R Wrap  
FPW  
page 87



Non-Return Valves  
NRV  
page 88



Air Admittance Valves  
F  
page 89



PVC Drainage  
Coupling  
page 90-91

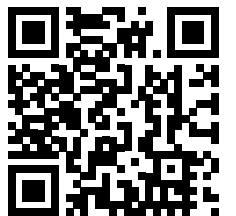
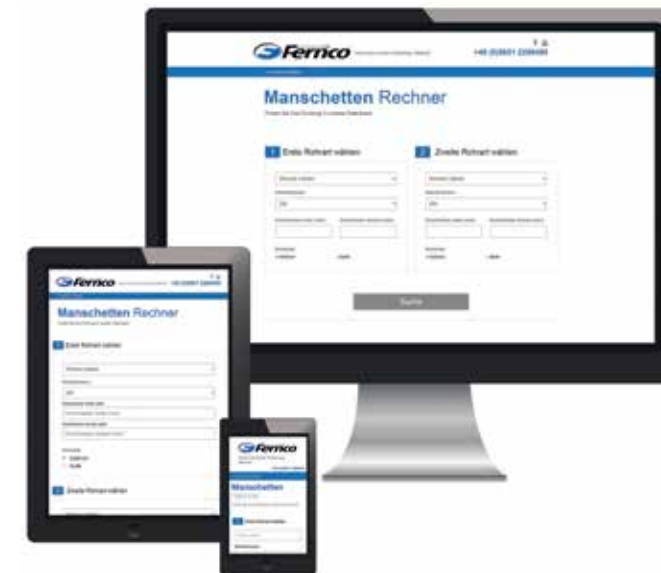


PVC Drainage  
Adaptor  
page 92-93

## Coupling Calculator

You don't know which coupling you need?  
Find your seal in our database!

Quick: within seconds  
Everywhere: whether on a PC, smartphone or tablet  
And of course, for free!



Scan the code with your Smartphone:

[www.findmycoupling.com](http://www.findmycoupling.com)



## Coupling type 2A TC

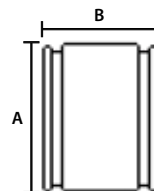


### Product description:

Product name	Coupling type 2A TC
Product group	Couplings

- For the connection of clay pipes of all manufacturers.
- Also suitable for all pipes with similar outside diameter (maximum difference 10 mm).
- Shear and clamp bands made of highly corrosion-resistant, austenitic, stainless steel of grade W 1.4301 (V2A).
- Pressure tight up to 0.6 bar.
- All TC couplings are made of EPDM according to EN 681-1 and V2A (1.4301) as standard.
- Meets all test criteria of DIN EN 295-4.

according to  
DIN EN 16397-1



### Installation:



Loosen the clamp bands and slide the coupling onto the first pipe. No lubricant required.



Make a mark on the second pipe, half a coupling's width from the end to be jointed.



Insert the second pipe up to the mark.



Tighten the clamp bands to the recommended torque in sequence across the width of the coupling.

Article No.	Clay Size DN	Range (mm)	Width – B (mm)	Ext. Dim. – A (mm)	Pressure (bar)	Torque (Nm)	Net Weight (kg)
TC135	100	120 – 135	102	175	0,6	6	0,5
TC165	125	150 – 165	102	205	0,6	6	0,6
TC190	150	175 – 190	110	230	0,6	6	0,8
TC250	200 N	235 – 250	110	290	0,6	6	0,9
TC265	200 H	250 – 265	110	305	0,6	6	1,0
TC305	250 N	290 – 305	165	355	0,6	13	2,0
TC325	250 H	310 – 325	165	375	0,6	13	2,1
TC360	300 N	345 – 360	165	410	0,6	13	2,2
TC385	300 H	370 – 385	165	445	0,6	13	2,3
TC425	350 N	410 – 425	160	485	0,6	13	2,8
TC440	350 H	425 – 440	160	500	0,6	13	2,6
TC500	400 N/H	485 – 500	160	560	0,6	13	3,5
TC560	450 H	545 – 560	160	620	0,6	13	3,8
TC590	500 N	575 – 590	160	650	0,6	13	4,1

Please note: It is **not** possible to make a transition from an AD 190 to AD 175 using a coupling with the clamping range 175-190 mm (TC 190). For this purpose, bushes may have to be used with a coupling type 2B.

Please note that we manufacture our couplings according to the currently valid WN 295 of Deutsche Steinzeug. It is therefore possible that in individual cases – e.g. with old pipes – inaccuracies in fit may occur.

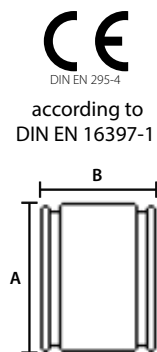
## Coupling type 2B SC



### Product description:

Product name	Coupling type 2B SC
Product group	Couplings

- For connecting sewage pipes of all materials and manufacturers (up to OD 620 mm).
- Connects all pipes up to OD 620 mm with a similar outside diameter (for an OD difference >12 mm the use of compensating rings is absolutely necessary).
- Numerous possibilities in connection with bushes (see page 14).
- All SC couplings are made of EPDM and V2A (1.4301) as standard.
- All SC couplings are also available in NBR quality (oil and petrol resistant) and/or in V4A (1.4404).
- Pressure tight up to 2.5 bar.



There are numerous application possibilities for installation, repair and maintenance of sewage pipes of all types for the SC couplings on its own or in combination with bushes.

### Installation:



Loosen the clamp bands and slide the coupling onto the first pipe. No lubricant required.



Make a mark on the second pipe, half a coupling's width from the end to be joined.



Insert the second pipe up to the mark.



Tighten the clamp bands to the recommended torque in sequence across the width of the coupling.

### Type 2B to connect clay pipes from all manufacturers and other types of pipe

Article No.	Clay Size DN	Range (mm)	Width – B (mm)	Ext. Dim. – A (mm)	Pressure (bar)	Torque (Nm)	Net Weight (kg)
SC137	100	120 – 137	120	177	2,5	6	0,7
SC165	125	140 – 165	136	205	2,5	6	0,9
SC200	150	175 – 200	150	240	2,5	6	1,3
SC250	200 N	225 – 250	150	290	2,5	13	1,6
SC265	200 H	240 – 265	150	315	2,5	13	1,7
SC310	250 N	285 – 310	190	370	2,5	13	3,1
SC335	250 H	305 – 335	190	395	2,5	13	3,4
SC360	300 N	340 – 360	190	420	2,5	13	3,5
SC385	300 H	355 – 385	190	445	2,5	13	3,7
SC425	350 N	400 – 425	190	485	2,5	13	4,3
SC445	350 H	420 – 445	190	505	2,5	13	4,4
SC490	400 N	465 – 490	190	550	2,5	13	4,7
SC510	400 H	480 – 510	190	570	2,5	13	4,9
SC560	450 H	530 – 560	190	620	2,5	13	5,3
SC600	500 N	570 – 600	190	660	2,5	13	5,6
SC620	500 H	590 – 620	190	680	2,5	13	5,8

### Type 2B to connect pipes of all types

Article No.	Range (mm)	Width – B (mm)	Ext. Dim. – A (mm)	Pressure (bar)	Torque (Nm)	Net Weight (kg)
SC65	50 – 65	90	105	2,5	6	0,4
SC75	60 – 76	108	115	2,5	6	0,5
SC85	70 – 85	80	125	2,5	6	0,4
SC95	80 – 95	110	135	2,5	6	0,5
SC115	100 – 115	120	155	2,5	6	0,8
SC120	110 – 121	120	160	2,5	6	0,7
SC125	110 – 125	120	165	2,5	6	0,8
SC137	120 – 137	120	177	2,5	6	0,7
SC150	125 – 150	136	190	2,5	6	0,9
SC165	140 – 165	136	205	2,5	6	0,9
SC175	150 – 175	136	215	2,5	6	0,9
SC185	160 – 185	136	225	2,5	6	1,1
SC200	175 – 200	150	240	2,5	6	1,3
SC215	190 – 215	150	255	2,5	13	1,6
SC225	200 – 225	150	265	2,5	13	1,5
SC250	225 – 250	150	290	2,5	13	1,6
SC265	240 – 265	150	315	2,5	13	1,7
SC275	250 – 275	150	325	2,5	13	2,1
SC290	265 – 290	150	340	2,5	13	2,3
SC310	285 – 310	190	370	2,5	13	3,1
SC320	295 – 320	190	380	2,5	13	3,2
SC335	305 – 335	190	395	2,5	13	3,4
SC345	315 – 345	190	405	2,5	13	3,4
SC360	340 – 360	190	420	2,5	13	3,5
SC385	355 – 385	190	445	2,5	13	3,7
SC410	385 – 410	190	470	2,5	13	4,1
SC425	400 – 425	190	485	2,5	13	4,3
SC435	410 – 435	190	495	2,5	13	4,4
SC445	420 – 445	190	505	2,5	13	4,4
SC450	425 – 450	190	510	2,5	13	4,5
SC465	435 – 465	190	525	2,5	13	4,6
SC470	440 – 470	190	530	2,5	13	4,6
SC490	465 – 490	190	550	2,5	13	4,7
SC510	480 – 510	190	570	2,5	13	4,9
SC525	495 – 525	190	585	2,5	13	5,0
SC540	510 – 540	190	600	2,5	13	5,1
SC550	520 – 550	190	610	2,5	13	5,2
SC560	530 – 560	190	620	2,5	13	5,3
SC570	540 – 570	190	630	2,5	13	5,4
SC580	555 – 580	190	640	2,5	13	5,5
SC600	570 – 600	190	660	2,5	13	5,6
SC620	590 – 620	190	680	2,5	13	5,8

All SC couplings are also available in nitrile quality (oil- and petrol resistant) and/or in V4A (1.4404) for an additional charge.

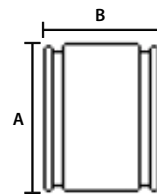
## Coupling type 2B LC



### Product description:

Product name	Coupling type 2B LC (190 mm wide)
Product group	Couplings

- For connecting sewage pipes of all materials (from OD 620 mm).
- Is produced individually according to customer specifications (production in mm-steps).
- Size of the coupling = pipe OD + 15 mm
- All LC couplings are made of EPDM and V2A (1.4301) as standard.
- All LC couplings are also available in NBR quality (oil and petrol resistant) and/or in V4A (1.4404).
- Unique clamping device facilitates installation.
- A = Ext. diameter of the coupling:  
Inside manufacturing dimensions + 80 mm clamping unit
- The clamping range of each LC-coupling is 30 mm!



### Installation:



Loosen the clamp bands and slide the coupling onto the first pipe. No lubricant required.



Make a mark on the second pipe, half a coupling's width from the end to be joined.



Insert the second pipe up to the mark.



Tighten the clamp bands to the recommended torque in sequence across the width of the coupling.

Type 2B Suitable for pipes of all materials (The clamping range of each LC-coupling is 30 mm!)

Article No.	Pipe (OD-Price Range)	Width – B (mm)	Pressure (bar)	Torque (Nm)
LC6xx	620 – 680	190	1,5	20
LC7xx	681 – 780	190	1,5	20
LC8xx	781 – 880	190	1,5	20
LC9xx	881 – 980	190	1,5	20
LC10xx	981 – 1080	190	1,0	25
LC11xx	1081 – 1180	190	1,0	25
LC12xx	1181 – 1280	190	1,0	25
LC13xx	1281 – 1380	190	1,0	25
LC14xx	1381 – 1480	190	0,6	25
The following LC sizes are produced with three clamping units to guarantee a better fit.				
LC15xx	1481 – 1580	190	0,6	25
LC16xx	1581 – 1680	190	0,6	25
LC17xx	1681 – 1780	190	0,6	25
LC18xx	1781 – 1880	190	o.G.	25
LC19xx	1881 – 1980	190	o.G.	25
LC20xx	over 1981	190	o.G.	25

All LC couplings are also available in **nitrile quality (oil- and petrol resistant)** and/or in **V4A (1.4404)** for an additional charge.

**CAUTION:** The specification of the outer diameter of the pipe(s) is absolutely **NECESSARY** for the production. All LC couplings from this table are **ALWAYS** custom-made and can **NOT** be refunded!



## Bushes BC



### Product description:

Product name	Bushes BC
Product group	Couplings

- Thicknesses: 4, 8, 12, 16, 24 und 32 mm
- Individual production according to customer requirements.
- Can be used for increased shear stability requirements.
- Can be used with the following Fernco couplings: SC, SCW, LC, LCW, MAGNUM and 2B1
- Compensates differences in outside diameter of up to 192 mm (max. 3 bushes).
- All bushes are made of EPDM as standard.
- Various thicknesses are also available in NBR quality (oil and petrol resistant).



### Installation:



Slide the bush onto the smallest pipe, up to the marked point.



Loosen the clamp bands and slide the coupling onto the larger pipe. No lubricant required.



Insert the smaller pipe up to the mark.



Tighten the clamp bands to the recommended torque in sequence accross the width of the coupling.

All compensating rings are available in:

Production range YY = 4 mm  
 Production range YY = 8 mm  
 Production range YY = 12 mm\*  
 Production range YY = 16 mm  
 Production range YY = 24 mm\*  
 Production range YY = 32 mm\*

We configure our Fernco compensating rings as required. The pipe outside diameter must be specified when ordering.

\*Production is only possible from an outside diameter of 200/250 mm.

Various thicknesses are also available in NBR quality (oil and petrol resistant) – plus 25 % of the list price.



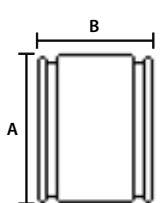
# Coupling 2B SCW, EXTRA WIDE



## Product description:

Product name	Coupling 2B SCW, Extra wide (300 mm wide)
Product group	Couplings

- For the connection of all types of sewage pipes (up to OD 620 mm).
- The width of 300 mm allows a greater tolerance when cutting the tip end, as well as a greater movement margin of the pipe during settling and thermal expansion.
- Particularly stable “Hi-Torque” clamp bands in V2A.
- Pressure tight up to 2.5 bar.
- All SCW couplings are made of EPDM and V2A (1.4301) as standard.
- All SCW couplings are also available in NBR quality (oil and petrol resistant) and/or in V4A (1.4404).



## Installation:



Loosen the clamp bands and slide the coupling onto the first pipe. No lubricant required.



Make a mark on the second pipe, half a coupling's width from the end to be jointed.



Insert the second pipe up to the mark.



Tighten the clamp bands to the recommended torque in sequence accross the width of the coupling.

Article No.	Clay Size DN	Range (mm)	Width – B (mm)	Ext. Dim. – A (mm)	Pressure (bar)	Torque (Nm)	Net Weight (kg)
SC225W	*	200 – 225	300	270	2,5	13	2,4
SC290W	*	265 – 290	300	335	2,5	13	3,1
SC310W	250 N	285 – 310	300	365	2,5	13	3,3
SC320W	*	295 – 320	300	375	2,5	13	4,9
SC335W	250 H	305 – 335	300	390	2,5	13	5,1
SC345W	*	315 – 345	300	400	2,5	13	5,2
SC360W	300 N	340 – 360	300	415	2,5	13	5,4
SC385W	300 H	355 – 385	300	440	2,5	13	5,8
SC410W	*	385 – 410	300	465	2,5	13	6,1
SC425W	350 N	400 – 425	300	480	2,5	13	6,4
SC435W	*	410 – 435	300	485	2,5	13	6,4
SC445W	350 H	420 – 445	300	500	2,5	13	6,7
SC450W	*	425 – 450	300	505	2,5	13	6,7
SC465W	*	435 – 465	300	520	2,5	13	7,0
SC470W	*	440 – 470	300	525	2,5	13	7,1
SC490W	400 N	465 – 490	300	545	2,5	13	7,3
SC510W	400 H	480 – 510	300	565	2,5	13	7,6
SC525W	*	495 – 525	300	580	2,5	13	7,9
SC540W	*	510 – 540	300	595	2,5	13	8,1
SC550W	*	520 – 550	300	605	2,5	13	8,2
SC560W	450 H	530 – 560	300	615	2,5	13	8,4
SC570W	*	540 – 570	300	625	2,5	13	8,5
SC580W	*	555 – 580	300	635	2,5	13	8,7
SC600W	500 N	570 – 600	300	655	2,5	13	9,0
SC620W	500 H	590 – 620	300	675	2,5	13	9,3

All SCW couplings are also available in **NBR quality (oil and petrol resistant)** and/or in **V4A (1.4404)** for an additional charge.

**CAUTION:** The specification of the outer diameter of the pipe(s) is absolutely **NECESSARY** for the production. All SCW couplings from this table are **ALWAYS** custom-made and can **NOT** be refunded!

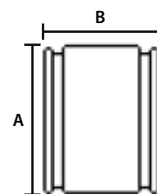
## Coupling 2B LCW, EXTRA WIDE



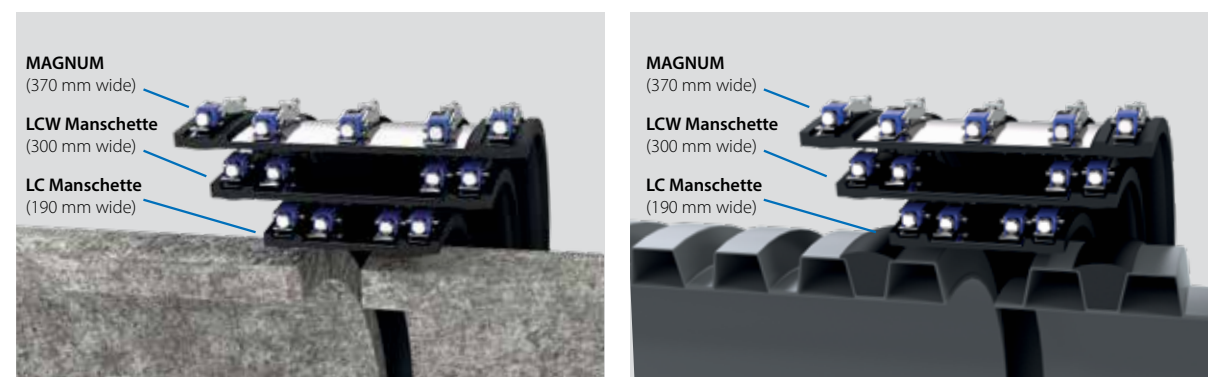
### Product description:

Product name	Coupling 2B LCW, Extra wide (300 mm wide)
Product group	Couplings

- For the connection of all types of sewage pipes (from OD 620 mm).
- Produced individually according to customer specifications (production in mm-steps).  
Size of the coupling = pipe OD + 15 mm
- The width of 300 mm allows a greater tolerance when cutting the tip end.
- A – Ext. diameter of the coupling =  
inside manufacturing dimensions + 80 mm clamping unit
- All LCW couplings are made of EPDM and V2A (1.4301) as standard.
- All LCW couplings are also available in NBR quality (oil and petrol resistant) and/or in V4A (1.4404).
- The clamping range of each LCW coupling is 30 mm!



### Executions:



Type 2B Can be used for pipes of all materials (the clamping range of each LCW coupling is 30 mm!)

Article No.	Pipe (OD-Price Range)	Width – B (mm)	Pressure (bar)	Torque (Nm)
LC6xxW	620 – 680	300	1,5	20
LC7xxW	681 – 780	300	1,5	20
LC8xxW	781 – 880	300	1,5	20
LC9xxW	881 – 980	300	1,5	20
LC10xxW	981 – 1080	300	1,0	25
LC11xxW	1081 – 1180	300	1,0	25
LC12xxW	1181 – 1280	300	1,0	25
LC13xxW	1281 – 1380	300	1,0	25
LC14xxW	1381 – 1480	300	0,6	25
The following LCW sizes are produced with three clamping units to guarantee a better safety.				
LC15xxW	1481 – 1580	300	0,6	25
LC16xxW	1581 – 1680	300	0,6	25
LC17xxW	1681 – 1780	300	0,6	25
LC18xxW	1781 – 1880	300	o.G.	25
LC19xxW	1881 – 1980	300	o.G.	25
LC20xxW	over 1981	300	o.G.	25

All LCW couplings are also available in **NBR quality (oil and petrol resistant)** and/or in **V4A (1.4404)** for an additional charge.

**CAUTION:** The specification of the outer diameter of the pipe(s) is absolutely **NECESSARY** for the production. All LCW couplings from this table are **ALWAYS** custom-made and can **NOT** be refunded!

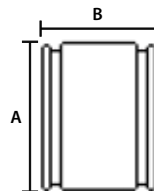
## Couplings 2B MAG, MAGNUM



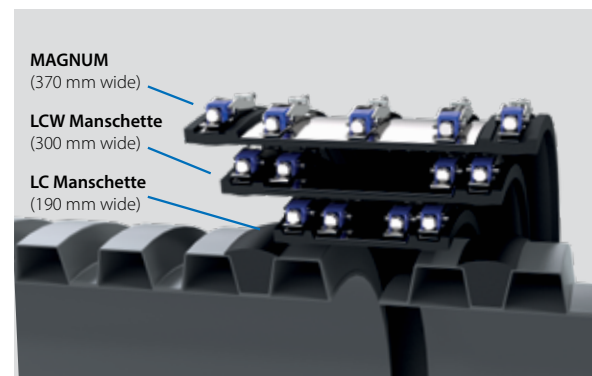
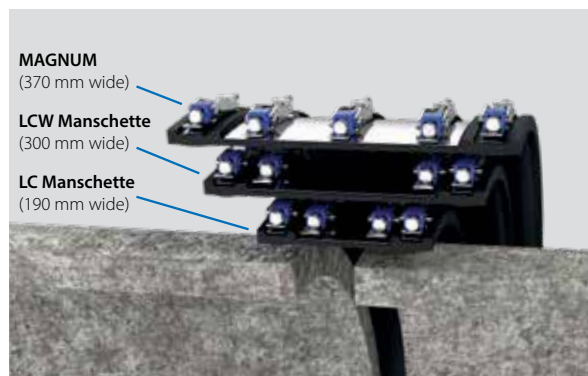
### Product description:

Product name	Coupling 2B MAG, Magnum (370 mm wide)
Product group	Couplings

- For the connection of all types of sewage pipes (from OD 320 mm).
- The width of **370 mm** allows a greater tolerance when cutting the tip end, as well as a greater movement margin of the pipe during settling and thermal expansion.
- High compressive strength achieved by using 5 high-quality heavy-duty clamping units.
- Pressure tight up to 4 bar.
- All MAG couplings are made of EPDM and V2A (1.4301) as standard.



### Executions:



Article No.	Size Clay Pipe DN	Range (mm)	Width – B (mm)	Ext. Dim. – A (mm)	Pressure (bar)	Torque (Nm)	Net Weight (kg)
MAG320	*	300 – 320	370	400	4,0	20	7,1
MAG335	250 H	315 – 335	370	415	4,0	20	7,4
MAG345	*	325 – 345	370	425	4,0	20	7,6
MAG360	300 N	340 – 360	370	440	4,0	20	7,9
MAG385	300 H	365 – 385	370	465	4,0	20	8,5
MAG410	*	390 – 410	370	490	2,5	20	9,0
MAG425	350 N	405 – 425	370	505	2,5	20	9,3
MAG435	*	415 – 435	370	515	2,5	20	9,4
MAG445	350 H	425 – 445	370	525	2,5	20	9,8
MAG450	*	430 – 450	370	530	2,5	20	9,9
MAG465	*	445 – 465	370	545	2,5	20	10,2
MAG470	*	450 – 470	370	550	2,5	20	10,3
MAG490	400 N	470 – 490	370	570	2,5	20	10,7
MAG510	400 H	490 – 510	370	590	2,5	20	11,1
MAG525	*	505 – 525	370	605	2,5	20	11,5
MAG540	*	520 – 540	370	620	2,5	20	11,8
MAG550	*	530 – 550	370	630	2,5	20	12,0
MAG560	450 H	540 – 560	370	640	2,5	20	12,2
MAG570	*	550 – 570	370	650	2,5	20	12,4
MAG580	*	560 – 580	370	660	2,5	20	12,6
MAG600	500 N	580 – 600	370	680	2,5	20	13,1
MAG620	500 H	600 – 620	370	700	2,5	20	13,5

**CAUTION:** All MAG couplings from this table are **ALWAYS** custom-made and can **NOT** be refunded!

**Type 2B Can be used for pipes of all materials (the clamping range of each MAG coupling > 620 mm is 30 mm!)**

Article No.	Pipe (OD-Price Range)	Width – B (mm)	Pressure (bar)	Torque (Nm)
MAG6xx	620 – 680	370	1,5	20
MAG7xx	681 – 780	370	1,5	20
MAG8xx	781 – 880	370	1,5	20
MAG9xx	881 – 980	370	1,5	20
MAG10xx	981 – 1080	370	1,0	25
MAG11xx	1081 – 1180	370	1,0	25
MAG12xx	1181 – 1280	370	1,0	25
MAG13xx	1281 – 1380	370	1,0	25
MAG14xx	1381 – 1480	370	0,6	25
<b>For better safety all MAG couplings with the following sizes are produced with three clamping units!</b>				
MAG15xx	1481 – 1580	370	0,6	25
MAG16xx	1581 – 1680	370	0,6	25
MAG17xx	1681 – 1780	370	0,6	25
MAG18xx	1781 – 1880	370	o.G.	25
MAG19xx	1881 – 1980	370	o.G.	25
MAG20xx	over 1981	370	o.G.	25

**CAUTION:** The specification of the outer diameter of the pipe(s) is absolutely **NECESSARY** for the production. All MAG couplings from this table are **ALWAYS** custom-made and can **NOT** be refunded!



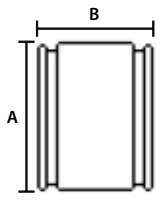
# Wraparound Coupling WRC , OPEN VERSION



## Product description:

Product name	Wraparound Coupling WRC, OPEN VERSION (190 mm wide)
Product group	Couplings

- WRC couplings are designed for the repair of damaged pipes.
- Reduced time and material expenditure, as no piece of pipe has to be removed from the pipeline.
- The WRC couplings are available in the range from 300 mm to 2100 mm in any size.
- Up to 620 mm the sizes are available analog to the standard couplings type 2B (e.g. SC 310, SC 320 etc.).
- Basically the following applies:  
Size of the coupling = OD pipe + 10 mm
- When ordering, please specify the exact outer diameter of the damaged pipe, **measured at the point of damage!**
- All WRC couplings are made of EPDM and V2A (1.4301) as standard.



## Installation:



Apply adhesive to one end of the profile and press against the other end for a few seconds.



Apply a few drops of adhesive to 2-3 places on the metal bridge and press them onto the joint for a few seconds.



Put the shear band and the tensioning straps around the coupling. Tighten all of the bands on the coupling equally.

Type 2B split 190 mm wide repair couplings (These couplings allow assembly with pre installed pipes!)

Article No.	Pipe (OD-Price Range)	Width – B (mm)	Pressure (bar)	Torque (Nm)
WRC3xx	300 – 385	190	o.G.	13
WRC4xx	386 – 485	190	o.G.	13
WRC5xx	486 – 585	190	o.G.	13
WRC6xx	586 – 685	190	o.G.	20
WRC7xx	686 – 785	190	o.G.	20
WRC8xx	786 – 885	190	o.G.	20
WRC9xx	886 – 985	190	o.G.	20
WRC10xx	986 – 1085	190	o.G.	25
WRC11xx	1086 – 1185	190	o.G.	25
WRC12xx	1186 – 1285	190	o.G.	25
WRC13xx	1286 – 1385	190	o.G.	25
WRC14xx	1386 – 1485	190	o.G.	25
WRC15xx	1486 – 1585	190	o.G.	25
WRC16xx	1586 – 1685	190	o.G.	25
WRC17xx	1686 – 1785	190	o.G.	25
WRC18xx	1786 – 1885	190	o.G.	25
WRC19xx	1886 – 1985	190	o.G.	25
WRC20xx	1986 – 2085	190	o.G.	25
WRC21xx	over 2086	190	o.G.	25

All WRC couplings are also available in **NBR quality (oil and petrol resistant)** and/or in **V4A (1.4404)** for an additional charge.  
**CAUTION:** The specification of the outer diameter of the pipe(s) is absolutely **NECESSARY** for the production. All WRC couplings from this table are **ALWAYS** custom-made and can **NOT** be refunded!



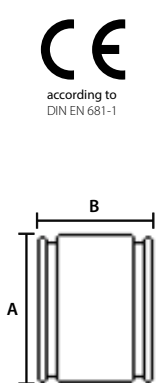
# Wraparound Coupling MWRC, OPEN VERSION



## Product description:

Product name	Wraparound Coupling MWRC, OPEN VERSION (370 mm)
Product group	Couplings

- MWRC couplings are designed for the repair of damaged pipes.
- Reduced time and material expenditure, as no piece of pipe has to be removed from the pipeline.
- The MWRC couplings are available in the range from 370 mm to 2100 mm in any size.
- From 620 mm the MWRC is manufactured in mm steps (621, 622, 623, ...). In principle, however, the following applies:  
**Size of the coupling = OD Pipe + 10 mm**
- When ordering, please specify the exact outer diameter of the damaged pipe, measured at the point of damage!



## Installation:



Apply adhesive to one end of the profile and press against the other end for a few seconds.



Apply a few drops of adhesive to 2-3 places on the metal bridge and press them onto the joint for a few seconds.



Put the shear band and the tensioning straps around the coupling. Tighten all of the bands on the coupling equally.

Type 2B Split 370 mm wide repair couplings (These couplings allow assembly with pre installed pipes!)

Article No.	Pipe (OD-Price Range)	Width – B (mm)	Pressure (bar)	Torque (Nm)
MWRC3xx	300 – 385	370	o.G.	20
MWRC4xx	386 – 485	370	o.G.	20
MWRC5xx	486 – 585	370	o.G.	20
MWRC6xx	586 – 685	370	o.G.	20
MWRC7xx	686 – 785	370	o.G.	20
MWRC8xx	786 – 885	370	o.G.	20
MWRC9xx	886 – 985	370	o.G.	20
MWRC10xx	986 – 1085	370	o.G.	25
MWRC11xx	1086 – 1185	370	o.G.	25
MWRC12xx	1186 – 1285	370	o.G.	25
MWRC13xx	1286 – 1385	370	o.G.	25
MWRC14xx	1386 – 1485	370	o.G.	25
MWRC15xx	1486 – 1585	370	o.G.	25
MWRC16xx	1586 – 1685	370	o.G.	25
MWRC17xx	1686 – 1785	370	o.G.	25
MWRC18xx	1786 – 1885	370	o.G.	25
MWRC19xx	1886 – 1985	370	o.G.	25
MWRC20xx	1986 – 2085	370	o.G.	25
MWRC21xx	over 2086	370	o.G.	25

**CAUTION:** The specification of the outer diameter of the pipe(s) is absolutely **NECESSARY** for the production. All MWRC couplings from this table are **ALWAYS** custom-made and can **NOT** be refunded!

## FlexPack & FlexPack Plus

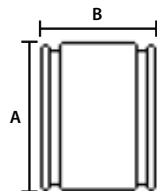


### Product description:

Product name	FlexPack, FlexPack Plus
Product group	Couplings

- Sets for the nominal widths DN 100, DN 150 and DN 200 for the connection of all types of sewage pipes.
- With each set, you can connect quickly and inexpensively all sewage pipes of the corresponding nominal width.
- FlexPack: This set always consists of **one** Flexring and **one** coupling of the corresponding nominal width.
- FlexPack Plus: This set always consists of **two** Flexrings and **one** coupling of the corresponding nominal width.
- All Flexrings are made of EPDM as standard.
- Individual Flexrings are also available in NBR quality (oil and petrol resistant).

  
DIN EN 295-4  
according to  
DIN EN 16397-1



Article No.	Size Clay Pipe DN	Content	Application Examples	Net Weight (kg)
FlexPack100	100	1 x SC 137 / 1 x FR 100	PVCu, Cast Iron, Ductile Iron, GRP, Asbestos Cement, EuroTop	0,9
FlexPack100PLUS	100	1 x SC 137 / 2 x FR 100	PVCu, Cast Iron, Ductile Iron, GRP, Asbestos Cement, EuroTop	1,1
FlexPack150	150	1 x SC 200 / 1 x FR 150	PVCu, Cast Iron, Ductile Iron, GRP, Asbestos Cement, EuroTop	1,6
FlexPack150PLUS	150	1 x SC 200 / 2 x FR 150	PVCu, Cast Iron, Ductile Iron, GRP, Asbestos Cement, EuroTop	1,9
FlexPack200	200	1 x SC 250 / 1 x FR 200	PVCu, Cast Iron, Ductile Iron, GRP, EuroTop	2,3
FlexPack200PLUS	200	1 x SC 250 / 2 x FR 200	PVCu, Cast Iron, Ductile Iron, GRP, EuroTop	3,0

\* The Flexpack 100 and FlexPack 100 PLUS are also available in **NBR quality (oil and petrol resistant)** for an additional charge.

### Application possibilities using the example of nominal with DN 100



# Flexring FR



## Product description:

Product name	Flexring FR
Product group	Couplings

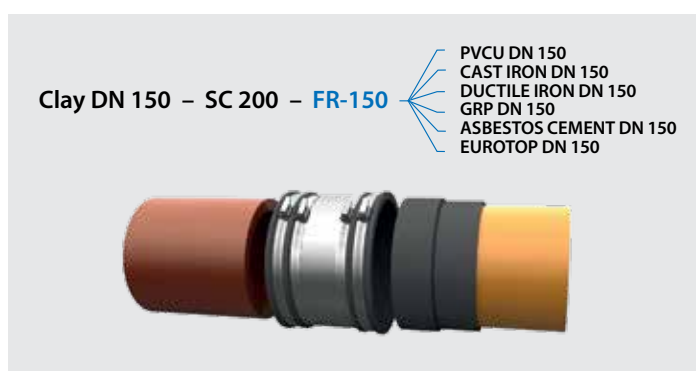
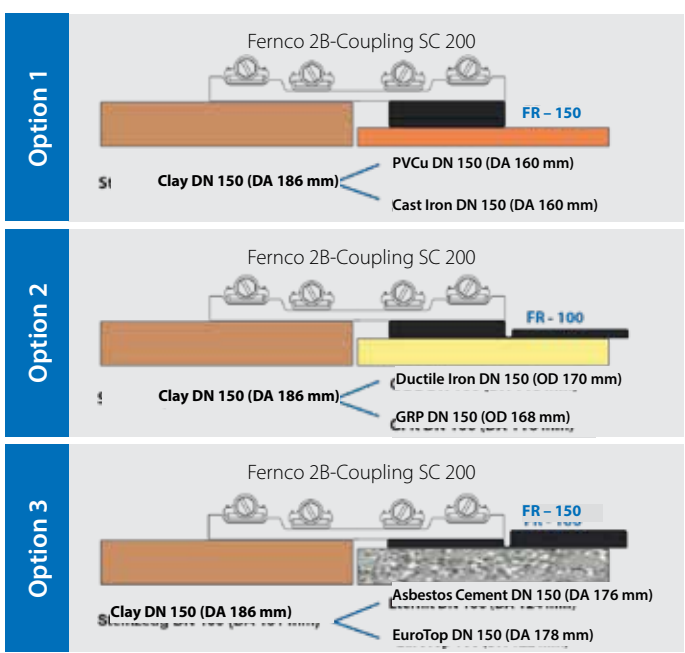
- Universally applicable compensating rings for the nominal width DN 100, DN 150 and DN 200.
- The patented Fernco compensating rings, in conjunction with the respective coupling, solve nearly every connection problem in the specified nominal range.
- All Flexrings are also available in sets (see page 28).
- All Flexrings are made of EPDM as standard.
- Individual Flexrings are also available in NBR quality (oil and petrol resistant).



Article No.	Size DN	OD (mm)	Application Examples	Net Weight (kg)
FR100	100	131	PVCu, Cast Iron, Ductile Iron, GRP, Asbestos Cement, EuroTop (DN 100)	0,2
FR150	150	186	PVCu, Cast Iron, Ductile Iron, GRP, Asbestos Cement, EuroTop (DN 150)	0,4
FR200	200	242	PVCu, Cast Iron, Ductile Iron, GRP, EuroTop (DN 200)	0,8

\* The Flexring FR 100 is also available in NBR quality (oil and petrol resistant) for an additional charge.

## Application possibilities using the example of the Flexring FR-150



**Application example for nominal width DN 150:**  
You can easily connect the following pipes:  
PVCu, Cast Iron, Ductile Iron, GRP, Asbestos Cement, EuroTop

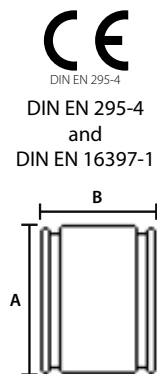
## Coupling 2B1, ALL-IN-ONE



### Product description:

Product name	Coupling 2B1, ALL-IN-ONE
Product group	Couplings

- Connects any pipes of the same nominal diameter regardless of the differences in OD, providing it is within its size range.
- Quick and easy to install – no special tools required
- Improved profile ensures the rubber doesn't collapse when installed to a pipe within its size range.
- The variable reducer shear band made of a special aluminium alloy ensures shear stability.
- EPDM sealing element according to DIN EN 295-4.
- High quality clamp bands made from 1.4404 stainless steel – at no extra charge!
- Reduces the need to carry excessive inventory.



### Installation:



Slide the coupling over the larger pipe and then tighten with the necessary torque.



Slide the smaller pipe into the open side of the coupling.



Now tighten the narrow clamp band. Pipe connection complete!

Article No.	Size DN	Range (mm) small side   large side	Application Examples	Width – B (mm)	Ext. Dim. – A (mm)	Net Weight (kg)
2B1-100	100	108 – 133		180	205	1,8
2B1-125	125	123 – 161		180	235	2,1
2B1-150	150	160 – 196		180	270	2,5
2B1-150B*	150	160/168/170 – 226   200 – 226	DN 150 (PVCu, Cast Iron, GRP, Ductile Iron to Concrete OD 200-225 mm)	180	300	3,9
2B1-200S	200	175 – 226		180	300	2,8
2B1-200L*	200	200/210/220/222/225/230/235-261   220 – 261	DN 200 (PVCu, Cast Iron, GRP, Ductile Iron, Robukan, HDPE, UR II, Asbestos Cement, Clay NL, Clay HL, Concrete OD 240-260 mm)	180	335	4,4
2B1-220	200	215 – 261		180	335	3,1
2B1-280	250	230 – 280		180	350	3,5
2B1-290	250	240 – 290		180	360	3,6
2B1-305	250	255 – 305		180	375	4,1
2B1-305L*	250	250/272/274-305   260 – 305	DN 250 (PVCu, Cast Iron, GRP, Ductile Iron, HDPE, UR II, Asbestos Cement, Clay NL)	180	375	5,1
2B1-320	250	270 – 320		180	400	4,3
2B1-320L*	250	250/272/274/280/299-320   270 – 320	DN 250 (PVCu, Cast Iron, GRP, Ductile Iron, HDPE, UR II, Asbestos Cement, Clay NL, Clay HL, Concrete up to OD 320 mm)	180	400	6,5
2B1-345	300	295 – 345		180	420	4,1
2B1-360	300	310 – 360		180	440	4,9
2B1-390	300	340 – 390		180	470	5,1
2B1-390L*	300	315/324/326/335/355-390   340 – 390	DN 300 (PVCu, Cast Iron, GRP, Ductile Iron, HDPE, UR II, Clay NL, Clay HL, Concrete up to OD 385 mm)	180	470	7,2
2B1-445	300	395 – 445		180	525	5,4
2B1-465	300	415 – 465		180	545	5,9
2B1-300B*	300	315/376-460   420 – 460	DN 300 (PVCu, HDPE, Clay HL to Concrete OD 420-460 mm)	180	545	13,2
2B1-540	400	490 – 540		180	620	6,6
2B1-570	400	520 – 570		180	650	7,1

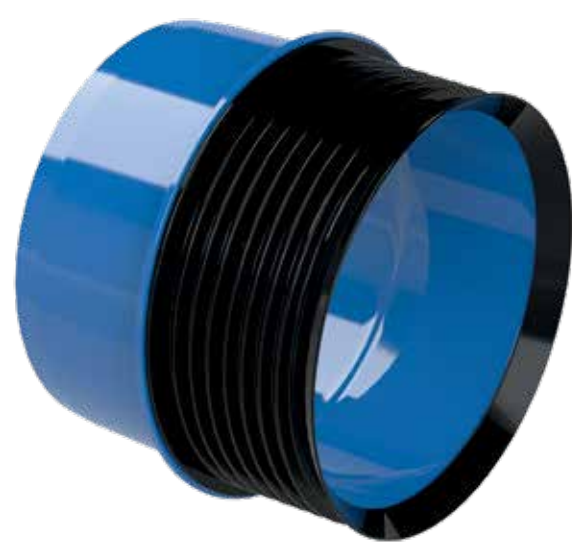
### Transition PVCu to Concrete – circular

Article No.	Size DN	Range (mm) small side   large side	Application Examples	Width – B (mm)	Ext. Dim. – A (mm)	Net Weight (kg)
2B1-150B*	150	160/168/170 – 226   200 – 226	DN 150 PVCu to concrete / reinforced concrete DN 150 / OD 200-225 mm	180	300	3,9
2B1-200L*	200	200/210/220/222/225/230/235-261   220 – 261	DN 200 PVCu to concrete / reinforced concrete DN 200 / OD 240-260 mm	180	335	4,4
2B1-320L*	250	250/272/274/280/299-320   270 – 320	DN 250 PVCu to concrete / reinforced concrete DN 250 / OD 280-320 mm	180	400	6,5
2B1-390L*	300	315/324/326/335/355-390   340 – 390	DN 300 PVCu to concrete, old / OD 370-385 mm	180	470	7,2
2B1-300B*	300	315/376-460   420 – 460	DN 300 PVCu to concrete / reinforced concrete DN 300 / OD 420-460 mm	180	545	13,2

\* Incl. bush as a supplement to the 2B1 coupling for bridging larger diameter differences or falling below the minimum clamping range. On request also available in other sizes.



# Inside/Outside-Adaptor, IA



## Product description:

- |               |                            |
|---------------|----------------------------|
| Product name  | Inside/Outside-Adaptor, IA |
| Product group | Internal Couplings         |
- Connects all pipes that are circular on the inside, such as concrete pipes with flat-base, reinforced pipes or wall ducts.
  - Pushfit connection – no tools required
  - Easy installation – within minutes
  - Safe against shear loads
  - No cleaning of the outside surfaces required.
  - Rubber sleeve made of EPDM with sealing lips for a watertight seal > 0.5 bar
  - Patent pending!
- according to  
DIN EN 16397-1

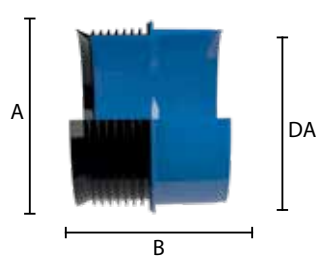
## Installation:

Clean the inner surface of the pipe and apply some lubricant to the inside.

Push the IA-Adaptor up to the product's pipe stop into the pipe/borehole.

Slide the socket of the plastic pipe to the other side of the adaptor.

When installing the IA-Adaptor in conjunction with a coupling, the second side of the adaptor is used as the pipe plain end.



Article No.	Size DN	Inside Diameter Di (mm)	Outside Diameter Da (mm)	Width – B (mm)	Ext. Dim. – A (mm)	Net Weight (kg)
IA100	100	99 – 104,5	110	125	130	0,3
IA125	125	123 – 127	125	170	145	0,5
IA150	150	148 – 153	160	170	180	0,6
IA200	200	198 – 202	200	175	220	0,8
IA225-250	225/250	220 – 225	250	210	270	1,6
IA250	250	248 – 252	250	175	270	1,3
IA300	300	298 – 302	315	175	333	1,5

Each IA-adaptor is supplied with a 30g tube of lubricant.  
\*The IA150 (combi product) is available on request.

## Application examples:

### The problem

Flat bottomed concrete pipe.

Flush cut pipes

Concrete pipes with an irregular surface

Pipes with damaged surface.

### The solution

Direct connection with PVC socket

Connection to pipe spigots

- using standard coupling SC type 2B with or without bush...
- ...or connection with 2B1 universal coupling All-In-One

For pressureless connections:

- Connection with AC adapter coupling
- ... or connection with DC drainage coupling

PVC

PVC 2000

Flat bottomed concrete pipe

Cast iron

Ribbed pipe

Cast iron

Geberit

Flat bottomed concrete pipe

PVC

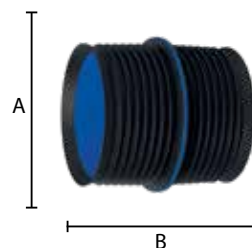
# Internal Coupling Pushfit ICP



## Product description:

Product name	Internal Coupling Pushfit ICP
Product group	Internal Couplings

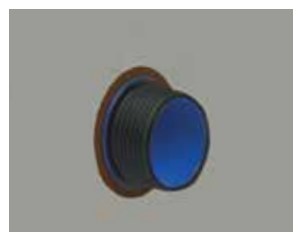
- For pipes with different outside diameters.
- Pushfit connection – no tools required.
- Can be installed in 30 seconds.
- Will connect any pipes with a similar internal diameter.
- Watertight connection with any pipe material.
- No cleaning of the outside surfaces required.
- Pipe stop indicates that the product is properly installed, when it is flush to the pipe end.
- Tested to 2.5 bar inline pressure.
- Meets all test criteria of DIN EN 295-4.



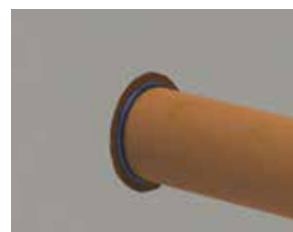
## Installation:



Clean the internal surface of the pipe from slurry and debris.



Push the Pushfit into pipe 1 up to the product's pipe stop.



Push pipe 2 onto the opposite end of the Pushfit.



Ensure that the tapered edge on the rubber sleeve does not fold back when inserting into the pipe.

## Same inside diameter

Article No.	Size DN	Inside Diameter (mm)	Width – B (mm)	Ext. Dim. – A (mm)	Net Weight (kg)
IC95P	100	93 – 98	110	120	0,2
IC100P	100	99 – 104,5	110	120	0,2
IC150P	150	147,5 – 153	171	172	0,7

## Reduction – differing inside diameters

Article No.	Size DN	Inside Diameter (mm)	Width – B (mm)	Ext. Dim. – A (mm)	Net Weight (kg)
IC95-100P	100	93 – 98 / 99 – 103	110	120	0,5
IC95-150P	100/150	93 – 98 / 147,5 – 153	141	172	0,5
IC100-150P	100/150	99 -103 / 147,5 -153	141	172	0,5

## More application example IC95-100P:

For rainwater downpipes with an inner diameter of 95 mm for connection to KG, vitrified clay, SML or other types of pipes with an inner diameter of 100 mm.



The Pushfit coupling connects pipes, such as plastic, cast iron and steel pipes with different outer diameters via the inner pipe surface, if for various reasons a normal sleeve seal cannot be used.



## Internal Coupling ICON



### Product description:

Product name	Internal Coupling ICON
Product group	Internal Couplings

- For pipes with different outside diameters.
- No special tools are required.
- Due to the long service life, there are no additional costs for monitoring and maintenance.
- All ICON couplings are made of EPDM and V2A (1.4301) as standard.
- For the connection of PVCu pipes of nominal sizes DN 200, DN 250 and DN 400, an overrunning sleeve may also be required to meet any differences in internal diameter. This is the only way to safely bridge the diameters!



### Installation:



Ensure a defect free surface. For concrete pipes, lubricate the inside surface.



Place the coupling into the end of the pipe that is already laid in the ground.



Push the second pipe up to the stops on the coupling and tighten to the required torque.

ICON Suitable for pipes of all materials (within the specified tolerances)

Article No.	Size DN	Inside Diameter (mm)	Width (mm)	Comment	Torque (Nm)	Net Weight (kg)
IC150	150	149 – 153	130		15	1,2
IC200KG2000	200	184 – 188	130		15	1,5
IC200KG	200	188 – 192	130		15	1,5
IC200	200	198 – 202	130		15	1,5
IC200+ÜMUorange	200	198 – 202	130	for KG incl. drainage socket orange/brown	15	2,7
IC200+ÜMUgrün	200	198 – 202	130	for PP/KG2000 incl. drainage socket green	15	3,2
IC250	250	248 – 252	130		15	1,8
IC250+ÜMUorange	250	248 – 252	130	for KG incl. drainage socket orange/brown	15	3,6
IC250+ÜMUgrün	250	248 – 252	130	for PP/KG2000 incl. drainage socket green	15	4,6
IC300	300	299 – 303	130		15	2,0
IC300KG2000	300	294 – 297 / 299 – 302	130	incl. bush	15	2,1
IC400	400	398 – 402	130		15	3,0
IC400+ÜMUgrün	400	398 – 402	130	for PP/KG2000 incl. drainage socket green	15	11,7
IC500	500	498 – 502	130		15	4,0
IC600	600	598 – 602	130		15	5,0

On request also available in other sizes.



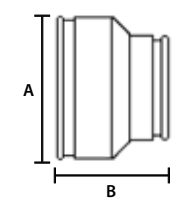
# Adaptor Coupling AC



## Product description:

Product name	Adaptor Coupling AC
Product group	Couplings

- For connecting pipes of all types and materials with different outside diameters.
- Suitable for connections without shear load requirements.
- When connecting pipes with different outside diameters (DN), the direction of flow must be observed.
- Pressure tight up to 0.6 bar.
- All AC Adaptors are made of EPDM and V2A (1.4301) as standard.
- Some AC Adaptors are also available in NBR quality (oil and petrol resistant).



## Installation:



Loosen the tensioning straps and slide the sleeve onto the first tube. No lubricant required.

Mark half of the cuff width at the end of the second tube.

Push the second tube into the cuff up to the mark.

Tighten the tensioning straps one after the other to the recommended torque.

\*Eccentric version. Selected adaptors are also available in NBR quality (oil and petrol resistant) and/or in V4A (1.4404) for an additional charge.

Article No.	OD – Range 1 (mm)	OD – Range 2 (mm)	Width – B (mm)	Ext. Dim. – A (mm)	Torque (Nm)	Pressure (bar)	Net Weight (kg)
PAC0301	30 – 34	24 – 28	80	60	6	0,6	0,1
TACB040	32 – 40	24 – 32	80	60	6	0,6	0,1
PAC0431	38 – 43	30 – 35	80	70	6	0,6	0,2
TACB052	40 – 50	24 – 32	80	70	6	0,6	0,2
PAC0562	48 – 56	38 – 43	80	80	6	0,6	0,2
PAC0682	60 – 68	38 – 43	80	95	6	0,6	0,2
PAC0923	82 – 92	48 – 56	80	120	6	0,6	0,3
PAC0924	82 – 92	60 – 68	80	120	6	0,6	0,3
AC0633	53 – 63	40 – 50	90	90	6	0,6	0,2
AC0894	75 – 89	53 – 63	90	115	6	0,6	0,3
AC1155	100 – 115	75 – 90	90	140	6	0,6	0,4
AC1201	105 – 120	35 – 45	100	145	6	0,6	0,4
AC1221	110 – 122	80 – 95	100	150	6	0,6	0,5
AC1225	110 – 122	48 – 56	100	150	6	0,6	0,4
AC1226	110 – 122	60 – 68	100	150	6	0,6	0,4
AC5144	110 – 125	100 – 115	100	150	6	0,6	0,6
AC1361	121 – 136	80 – 95	100	160	6	0,6	0,5
AC1362	121 – 136	100 – 115	100	160	6	0,6	0,5
AC4000	121 – 136	110 – 121	100	160	6	0,6	0,5
AC1452	130 – 145	110 – 125	120	170	6	0,6	0,6
AC1552	140 – 155	90 – 105	120	180	6	0,6	0,6
AC1602	144 – 160	110 – 122	120	185	6	0,6	0,7
AC1603	144 – 160	121 – 136	120	185	6	0,6	0,8
AC1702	155 – 170	110 – 125	120	195	6	0,6	0,8
AC1703	155 – 170	130 – 145	120	195	6	0,6	0,8
AC1922	170 – 192	110 – 122	120	220	6	0,6	0,9
AC1923	170 – 192	121 – 136	120	220	6	0,6	0,9
AC1924	170 – 192	144 – 160	120	220	6	0,6	0,9
AC2000	180 – 200	130 – 145	150	225	6	0,6	1,2
AC2001	180 – 200	155 – 170	150	225	6	0,6	1,2
AC6000	180 – 200	160 – 180	150	225	6	0,6	1,1
AC2100	185 – 210	100 – 115	150	235	6	0,6	1,2
AC2101	185 – 210	160 – 180	150	235	6	0,6	1,2
AC2152O/S*	195 – 215	100 – 115	150	240	6	0,6	1,4
AC2154	190 – 215	150 – 165	150	240	6	0,6	1,2
AC2254	200 – 225	160 – 175	150	250	6	0,6	1,3
AC2352	210 – 235	110 – 122	150	260	6	0,6	1,4
AC2353	210 – 235	121 – 136	150	260	6	0,6	1,4
AC2354	210 – 235	144 – 160	150	260	6	0,6	1,4
AC2355	210 – 235	170 – 192	150	260	6	0,6	1,4
AC2356	210 – 235	190 – 215	150	260	6	0,6	1,5
AC2654	240 – 265	144 – 160	150	290	6	0,6	1,7
AC2655	240 – 265	170 – 192	150	290	6	0,6	1,7
AC2656	240 – 265	190 – 215	150	290	6	0,6	1,7
AC2657	240 – 265	210 – 235	150	290	6	0,6	2,0
AC2754	250 – 275	160 – 175	150	300	6	0,6	2,0
AC2756	250 – 275	200 – 225	150	300	6	0,6	2,0
AC9001	260 – 285	180 – 205	150	310	13	0,6	2,3
AC2904	265 – 290	144 – 160	150	315	13	0,6	2,0
AC2907	265 – 290	210 – 235	150	315	13	0,6	2,0
AC2908	265 – 290	235 – 260	150	315	13	0,6	2,0
AC2956O/S*	270 – 295	185 – 210	150	320	13	0,6	2,5
AC3204	295 – 320	144 – 160	150	345	13	0,6	3,0
AC3205	295 – 320	170 – 192	150	345	13	0,6	3,0
AC3207	295 – 320	210 – 235	150	345	13	0,6	2,5
AC3208	295 – 320	240 – 265	150	345	13	0,6	2,5
AC3209	295 – 320	265 – 290	150	345	13	0,6	2,5
AC3351O/S*	310 – 335	180 – 205	150	360	13	0,6	2,6
AC3608	335 – 360	240 – 265	165	390	13	0,6	3,5
AC3609	335 – 360	265 – 290	165	390	13	0,6	3,5
AC3600	335 – 360	295 – 320	165	390	13	0,6	3,0
AC3858	360 – 385	240 – 265	165	415	13	0,6	3,5
AC3859	360 – 385	265 – 290	165	415	13	0,6	3,5
AC3850	360 – 385	300 – 325	165	415	13	0,6	3,0
AC4208	395 – 420	240 – 265	165	450	13	0,6	4,0
AC4209	395 – 420	265 – 290	165	450	13	0,6	4,0





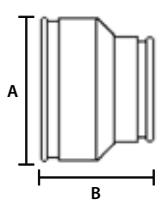
# Adaptor Coupling AR



## Product description:

Product name	Adaptor Coupling AR
Product group	Couplings

- For connecting ribbed plastic pipes with pipes of all types and materials and different outside diameters.
- Provides a quick and efficient method of connecting pipes of different materials and outside diameters
- Incorporates an extra wide clamping band to ensure a high-performance seal against pipe ribs.



Article No.	OD – Range 1 (mm)	OD – Range 2 (mm)	Width – B (mm)	Ext. Dim. – A (mm)	Torque (Nm)	Pressure (bar)	Net Weight (kg)
AR1500	170 – 191	160 – 170	100	215	6	0,6	0,7
AR2250	260 – 285	240 – 250	130	310	13	0,6	1,8
AR3000	360 – 385	325 – 335	160	415	13	0,6	2,8



# Proflex PRX, shielded transition coupling



## Product description:

Product name	Proflex PRX, Shielded transition coupling
Product group	Couplings

- Allows you to make pipe connections that are resistant to shear forces, while creating a rigid, long-lasting pipe joint.
- Proflex connects cast iron, plastic, steel, copper and tubular, drain waste and vent systems for above-ground applications.
- All Proflex couplings are made of neoprene and V2A (1.4301) as standard.

Article No.	OD – Range 1 (mm)	OD – Range 2 (mm)	Width – B (mm)	Pressure (bar)	Torque (Nm)	Net Weight (kg)
PRX3000-150	45 – 50	45 – 50	54	0,3	7	0,2
PRX3006-215	45 – 50	49 – 53	54	0,3	7	0,3
PRX3003-22	49 – 54	49 – 54	54	0,3	7	0,2
PRX3000-22	52 – 58	52 – 58	54	0,3	7	0,15
PRX3000-33	81 – 86	85 – 89	54	0,3	7	0,2
PRX3005-33	84 – 89	86 – 90	54	0,3	7	0,2
PRX3000-43	83 – 90	105 – 115	54	0,3	7	0,4
PRX3005-43	85 – 90	110 – 115	54	0,3	7	0,4
PRX3000-44	105 – 112	105 – 115	54	0,3	7	0,3

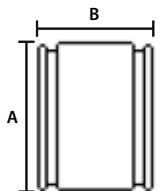
# Drain Coupling DC & PC



## Product description:

Product name	Drain Coupling DC & PC
Product group	Couplings

- For connecting pipes of all types and materials with the same or similar outside diameters.
- For use in drainage systems, when no consideration of shear loads is required.
- When used with a vitrified clay pipe, these seals meet the requirements of DIN EN 294, part 4.
- Application possibilities
  - Repair of existing pipes by replacing short sections.
  - The connection of sleeveless pipes.
  - The use as an adapter between pipes of different materials with similar outer diameters.
- All DC couplings are made of EPDM and V2A (1.4301) as standard.



## Installation:



Loosen the tensioning straps and slide the sleeve onto the first tube. No lubricant required.

Mark half of the cuff width at the end of the second tube.

Push the second tube into the cuff up to the mark.

Tighten the tensioning straps one after the other to the recommended torque.

Article No.	Range (mm)	Width – B (mm)	Ext. Dim. – A (mm)	Torque (Nm)	Pressure (bar)	Net Weight (kg)
PC35	30 – 35	70	60	6	0,6	0,2
PC43	38 – 43	70	70	6	0,6	0,2
DC50	40 – 50	90	75	6	0,6	0,2
PC56	48 – 56	70	80	6	0,6	0,2
TDCB058	50 – 58	70	85	6	0,6	0,2
DC65	50 – 65	90	90	6	0,6	0,3
PC68	60 – 68	80	95	6	0,6	0,2
DC75	70 – 76	80	100	6	0,6	0,3
PC76	68 – 76	80	100	6	0,6	0,3
PC85	76 – 85	80	100	6	0,6	0,3
PC92	85 – 92	80	110	6	0,6	0,3
DC95	80 – 95	100	120	6	0,6	0,4
PC100	92 – 100	80	125	6	0,6	0,3
DC115	100 – 115	100	140	6	0,6	0,5
DC125	110 – 125	100	150	6	0,6	0,7
DC135	120 – 135	120	165	6	0,6	0,7
DC150	135 – 150	120	180	6	0,6	0,7
DC165	150 – 165	120	195	6	0,6	0,8
DC175	160 – 175	120	205	6	0,6	0,8
DC185	170 – 185	120	215	6	0,6	0,8
DC195	180 – 195	120	225	6	0,6	0,8
DC215	200 – 215	150	245	6	0,6	1,2
DC225	210 – 225	150	255	6	0,6	1,2
DC250	235 – 250	150	280	6	0,6	1,2
DC265	250 – 265	150	295	13	0,6	1,3
DC275	260 – 275	150	305	13	0,6	1,5

Selected DC couplings are also available at extra cost in NBR quality (oil and petrol resistant) – plus 25 % and/or in V4A (1.4404) – plus 20 % of the list price.

# Connection element FA-ST



### Product description:

Product name	Saddle FA-ST
Product group	Lateral Connections

- For connecting pipes of all types to clay main pipes.
- The connection element FA 150 ST is used for connection to clay main pipes DN 250N – 350H or 200 VT – 300 VT.
- In conjunction with a Fernco Flexring FR 150, all other types of pipe of nominal width DN 150 can be connected, e.g
  - PVC DN 150 – Cast iron DN 150 – GRP DN 150
  - Ductile iron DN 150 – HDPE DN 150 – PP DN 150

Article No.	Size DN	Core Drill (mm)	Net Weight (kg)
FA150-ST	150 Steinzeug	172 +1/-0	0,9

### Our recommendation:



Article No.	Content
ESH150B	Impact aid for FA-Element DN 150

# Universal Saddle FA-UNI



### Product description:

Product name	Universal Saddle FA-UNI
Product group	Lateral Connections

- For connecting clay pipes or other pipe types DN 150 to main pipes from DN 250.
- Clay pipes of nominal sizes DN 150 can be connected directly to the FA-UNI element.
- Other types of pipe are easily connected with the patented Flexring FR 150.
- The main pipe must not be completely uncovered, the pipe can remain undamaged.
- All materials resist normal ground conditions.
- The sleeve takes shear loads of more than 4 kN (requirements of the DIN: 1.5 kN) without impairing the function.

Article No.	DN	Core Drill (mm)	Net Weight (kg)
FA150-U	150 Clay	172 +1/-0	1,5
FA150-U inkl. Flexring	150 PvCu, Cast Iron, GRP, Asbestos Cement, EuroTop	172 +1/-0	2,1

Depending on the nature and wall thickness of the main pipes, a different number of rings are required.

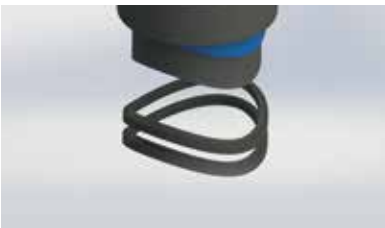
**Wall thickness from 23 mm to 30 mm = 2 rings**

**Wall thickness from 28 mm to 40 mm = 1 rings**

**Wall thickness from 40 mm = 0 rings**

You don't know which connecting element you need? Please use our comparison overview on page 94. For easier installation, we recommend our Fernco impact aid ESH150B, see page 83.

### Installation:



Drill a hole with a diamond core and make sure the area is clean and free from slurry/debris. Use the correct number of shims based on the wall thickness of the main pipe.



Remove the locking sleeve. Position the saddle in the hole. Break off the tabs from the locking sleeve and lubricate using water.



Drive the locking sleeve evenly around the circumference until fully locked. Tighten the clamp band to the recommended torque.

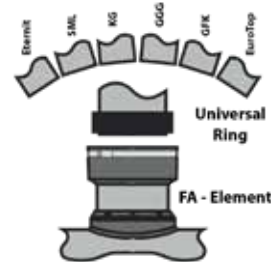
# Saddle FA-B



## Product description:

Product name	Saddle FA-B
Product group	Lateral Connections

- For pipes of all kinds on concrete and clay main pipes.
- Clay pipes of nominal sizes DN 150 and DN 200 can be connected directly to the FA element.
- Other types of pipe are easily connected to the patented FR 150 or FR 200 Flexring.
- The Fernco connection elements FA150B and FA200B are intended for connection to concrete main pipes with a wall thickness of 50 mm to 150 mm.
- The sleeve takes shear loads of more than 4 kN (requirements of DIN: 1.5 kN) without impairment of function.



## Our recommendation:



Article No.	Content
ESH150B	Impact aid for FA-Element DN 150
ESH200B	Impact aid for FA-Element DN 200

Article No.	DN	Core Drill (mm)	Net Weight (kg)	From skin pipe DN
FA 150-B	150 Clay	172 +1/-0	2,5	300
FA 150-B incl. Flexring	150 PVCu, Cast Iron, Ductile Iron, GRP, Asbestos Cement, EuroTop	172 +1/-0	3,0	300
FA 200-B	200 Clay	232 +1/-0	3,5	400
FA 200-B incl. Flexring	200 PVCu, Cast Iron, Ductile Iron, GRP, UR II	232 +1/-0	4,8	400
Tool for FA 150	Attention: differing discounts		0,6	
Tool for FA 200	Attention: differing discounts		0,9	

You do not know which lateral connection you need? Please refer to our comparison overview on page 94.

## Installation:



Make a core hole and deburr the hole.



Adjust the screw collar according to the wall thickness.



Place the element flush, observe the radius.



Remove the transport lock from the clamping sleeve. Water the impact sleeve and the element.



Drive in the clamping sleeve flush with the driving-in aid.



Tighten the tensioning strap with 6 Nm.



# Saddle TA



## Product description:

Product name	Saddle TA
Product group	Lateral Connections

- Fast and inexpensive way to connect PVCu or cast-pipes DN 100, DN 150 and DN 200 to all smooth-walled main pipes up to a DA of 600 mm.
- The density element consists of a high-quality EPDM. The connection sleeve is made of a thermoplastic elastomer.
- All steel parts, the clamping straps and the radius flexible pressing plate are made of a stainless steel of grade W.1.4301 (V2A).
- By using at least 3 tensioning units it is ensured that the complete sealing element is **always** firmly on the main pipe.
- Withstand a pressure of at least 0.6 bar.

Article No.	For connecting (DN)	Main Pipe OD (mm)	Core Drill (mm)	Pressure (bar)	Net Weight (kg)
TA11090	PVCu / Cast Iron DN 100	200 – 400	127	0,6	3,0
TA11045	PVCu / Cast Iron DN 100	200 – 400	*	0,6	3,2
TA16090	PVCu / Cast Iron DN 150	250 – 400	172	0,6	4,8
TA16045	PVCu / Cast Iron DN 150	250 – 400	*	0,6	5,2
TA20045	PVCu DN 200	300 – 600	*	0,6	8,6

## Installation:



# Saddle FA-KG



## Product description:

Product name	Saddle FA-KG
Product group	Lateral Connections

- For the connection of PVCu DN 150 and PVCu DN 200 to concrete pipes and shafts (according to DIN 4034-1).
- The sealing element consists of a high-quality elastomer according to DIN 681-1.
- A permanent and tight connection is ensured by circumferential locking lips.
- Due to the special construction of the mold, the feeding of the connecting pipe into the main pipe is prevented.
- An exact core drilling of 186 mm (DN 150) or 226 mm (DN 200) is required to install the FA-KG connection.
- The nozzle, which is inserted as far as the stop, is used to hold a PVCu connection pipe DN 150 or DN 200.

Article No.	For connecting (DN)	Pipe OD (mm)	Core Drill (mm)	Pressure (bar)	Net Weight (kg)
FA-KG150	PVCu / Cast Iron DN 150	300	186 ± 1,8	0,6	1,3
FA-KG200	PVCu DN 200	400	226 ± 2	0,6	2,0

# Saddle PA



## Product description:

- |               |                     |
|---------------|---------------------|
| Product name  | Saddle PA           |
| Product group | Lateral Connections |
- For the lateral connection of plastic pipes (PVCu, etc.) with an outer diameter of 160 mm to double-walled or corrugated and ribbed main pipes from DN 300
  - Resists an internal pressure of 0.5 bar.
  - The main pipe does not need to be completely uncovered, the pipe bed can remain undisturbed.
  - The following information about the pipe line is required for the correct selection:
    - pipe brand / manufacturer
    - nominal width
 Or two of the following three dimensions:
    - wall thickness
    - inner diameter
    - outer diameter

## Connection options:

With the optionally available PA adapters, you can also connect pipe types or pipe sizes other than DN 150 plastic to the PA saddle piece.



Article No.	Inside Diameter Main Pipe (mm)	Wall thickness of the Main Pipe	Connection Type	Inside Diameter Connection Pipe (mm)	Core Drill (mm)	Net Weight (kg)
PA1530	300	several	160 mm PVCu	150	177	1,6
PA1540	400	several	160 mm PVCu	150	177	1,7
PA1550	500	several	160 mm PVCu	150	177	1,7
PA1560	600	several	160 mm PVCu	150	177	1,7
PA-AS110	connecting kit		DN 100 PVCu			1,0
PA-AS130	connecting kit		DN 100 Clay			1,1
PA-AS180	connecting kit		DN 150 Clay			1,2

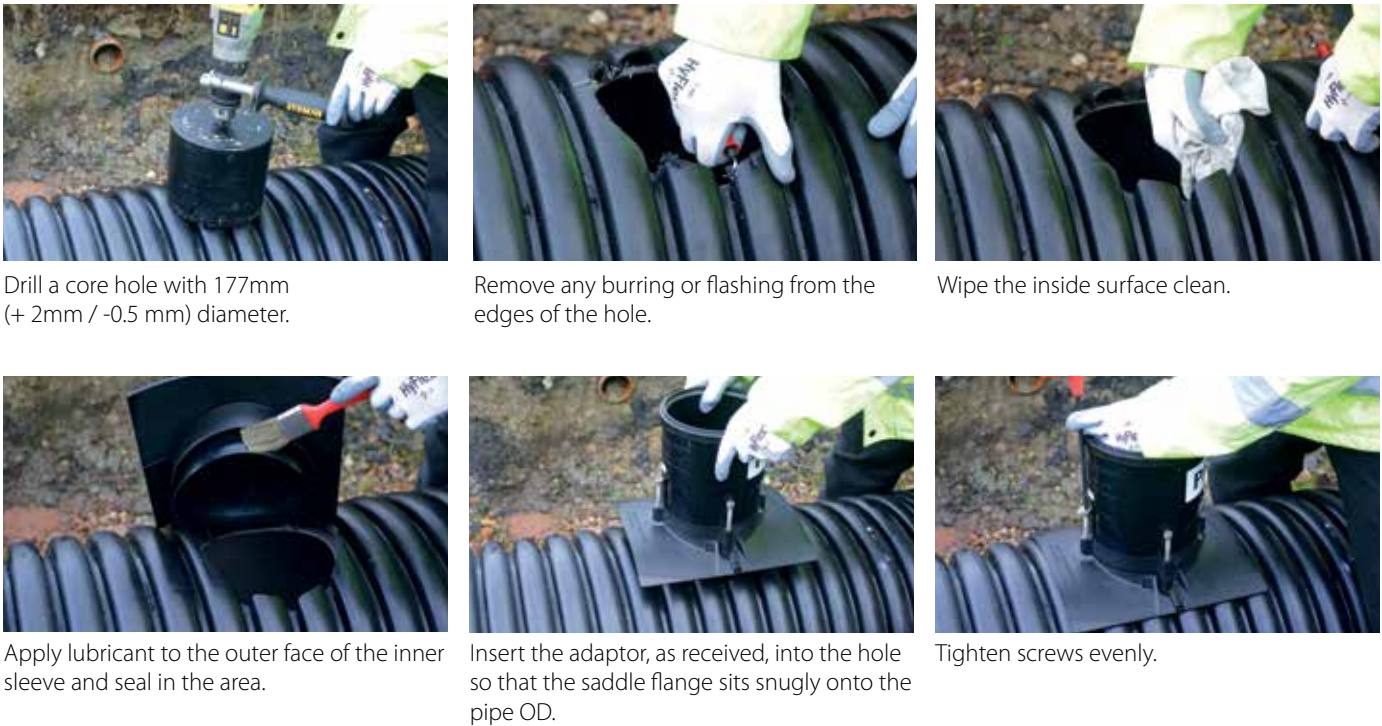
The table serves only as a guideline. Please enquire with our technical sales department before making your final product selection.  
 You do not know which connecting element you need? Use our comparison overview on page 94.

## Our recommendation:



Article No.	Content
BK-K90/177	Hole saw for plastic pipes INSITU DN 150 (Core drilling 177 mm)
BK-AUF150	Holder for drill bit

## Installation:



# Pipe Seal L965



### Product description:

Product name	Pipe Seal L965
Product group	Pipe Seals

- For connecting plastic pipes to corrugated and / or ribbed main pipes or shafts.
- Cost-effective alternative to the connections offered by the different pipe manufacturers.
- Either connect a plastic sleeve directly or connect pipes with a larger outer diameter using a Flexseal 2B coupling and a bush.
- The L 965 is available in overall lengths of 60 mm and 90 mm.
- With the optionally available PA adapters, you can also connect other pipe types or pipe sizes as DN 100 plastic to the L 965.

Article No.	Pipe-OD (mm)	Core Drill (mm)	Overall Length (mm)	max. Wall Thick-ness (mm)	Net Weight (kg)
L965-110-60	110	127	60	30	0,4
L 965-110-90	110	127	90	65	0,4
L 965-160-60	160	177	60	30	0,6
L 965-160-90	160	177	90	65	0,7
L 965-200-75	200	217	75	50	0,7
PA-AS 130					1,1
PA-AS 180					1,2
Hole saw for plastic pipes with chuck					-
KG-connector (orange)					0,5
Mounting aid – Assemblytool					2,5

Alternatively available in NBR quality (oil and petrol resistant) or SBR quality and/or in V4A (1.4404) at an extra charge.

### Installation:



Drill a hole in the specified size and deburr the hole.



Position the Insitu Seal into the drilled hole until the collar reaches the inside of the pipe.



Coat the inside of the seal with lubricant (not under the clamp band).



Insert the pipe into the Insitu Seal.



Use the assembly tool to position the seal correctly.



Before removing the tool tighten the tightening strap with 8Nm.

# Pipe Seal FF 150



### Product description:

Product name	Pipe Seal FF150
Product group	Pipe Seals

- To connect DN150 lateral pipes into concrete structures.
- The seal uses three component parts to adjust the internal size depending on the lateral pipe material being fitted.
- The universal nature of the FF150 means that any DN150 lateral pipe with outside diameters between 158mm to 179mm can be fitted.

Article No.	Size DN	OD (mm)	Core Drill (mm)	Pressure (bar)	Net Weight (kg)
FF150	150	158 – 179	198	0,75	1,0



## Pipe Seal LSK



### Product description:

Product name	Pipe Seal LSK
Product group	Pipe Seals

- For the subsequent connection of smooth-walled pipes, e.g. PVCu, Cast Iron, Ductile Iron, Eternit or steel to main pipes and shafts made of concrete or reinforced concrete.
- The pipe connection constitutes an articulated connection and can thus reliably absorb any possible shifting.
- For connections up to 200 mm, a bend of 7 ° is ensured, for larger diameters 4 °, before the connection begins to leak.

Article No.	Size DN	OD (mm)	Core Drill (mm)	Insertion depth (mm)	Net Weight (kg)
LSK960-40	40	40	75	50	0,3
LSK960-50	50	50	75	50	0,3
LSK960-63	60	63	89	50	0,3
LSK960-75	70	75	101	50	0,3
LSK960-90	90	90	116	50	0,3
LSK960-110	100	110	138	50	0,4
LSK960-110NBR	100	110	138	50	0,4
LSK960-110-L	100	110	138	105	0,8
LSK960-125	125	125	151	50	0,4
LSK960-160	150	160	186	50	0,5
LSK960-160NBR	150	160	186	50	0,5
LSK960-160-L	150	160	186	105	0,8
LSK960-170	150	170	196	50	0,5
LSK960-200	200	200	226	50	0,6
LSK960-222	200	222	248	50	0,8
LSK960-225	245	225	251	50	0,8
LSK960-250	250	250	276	50	0,7
LSK960-315	300	315	341	50	0,8
LSK960-400	400	400	426	50	1,0
LSK960-500	500	500	526	50	1,3

Overall length: 50 mm / \*Outline length L – version: 105 mm  
Other sizes available on request.  
Alternatively also available in NBR quality (oil and petrol resistant) or SBR quality at an extra charge.

## Pipe Seal LM



### Product description:

Product name	Pipe Seal LM
Product group	Pipe Seals

- Is used for the subsequent connection of pipes made of clay from all manufacturers to main pipes and shafts made of concrete or reinforced concrete.
- Material made of a high-quality EPDM according to DIN 681-1.
- The thick profile of the LM 60 makes it possible to compensate for the higher weight and tolerance variations of the clay pipes.

### ① LM for thin-walled pipes:

Article No.	Size (DN)	Core Drill (mm)	Net Weight (kg)
LM20-40	40/10	44	0,1
LM20-50	50/10	60	0,1
LM20-63	63/10	70	0,1
LM20-75	75/10	83	0,1
LM08-80	80/8	89	0,1
LM04-110	110/4	117	0,1
LM10-110	110/10	117	0,1
LM20-110	110/10	121	0,1
LM07-160	160/7,5	164	0,1
LM20-160	160/10	170	0,1

### ② LM 60: Overall length 60 mm for connection to vitrified clay pipes

Article No.	Clay (DN)	OA (mm)	Core Drill (mm)	Net Weight (kg)
LM60-131	100	131	146	0,3
LM60-186	150	186	200	0,4
LM60-242	200	242	257	0,5
LM60-296	250	296	311	1,0

Other sizes available on request.

# Pipe Seal LM 50/100/150



## Product description:

Product name	Pipe Seal LM 50/100/150
Product group	Pipe Seals

- To connect smooth-walled pipes to concrete main pipes and shafts.
- For the correct length (50, 100 or 150 mm) only the wall thickness of the main pipe is decisive!
- Make sure that the necessary core drilling can be made – Tolerance of the core bore:  $\pm 1$  mm
- In addition to these listed seals, further sizes are available as special designs!

## LM 50: Overall Length 50 mm

Article No.	Clay (DN)	Core Drill (mm)	Net Weight (kg)
LM50-40	PVCu 40	52	0,1
LM50-50	PVCu 50	62	0,1
LM50-75	PVCu 70	87	0,1
LM50-90	PVCu 90	101	0,1
LM50-110	PVCu 100	122	0,2
LM50-125	PVCu 125	137	0,2
LM50-160	PVCu 150	172	0,2
LM50-200	PVCu 200	212	0,4
LM50-250	PVCu 250	262	0,4
LM50-315	PVCu 300	327	0,5
LM50-110	Cast Iron 100	122	0,2
LM50-135	Cast Iron 125	147	0,3
LM50-160	Cast Iron 150	172	0,2
LM50-210	Cast Iron 200	222	0,7
LM50-274	Cast Iron 250	286	0,9
LM50-168	GRP 150	180	0,6
LM50-220	GRP 200	232	0,8
LM50-272	GRP 250	284	0,9
LM50-118	Ductile Iron 100	130	0,2
LM50-170	Ductile Iron 150	182	0,2
LM50-222	Ductile Iron 200	234	0,8
LM50-274	Ductile Iron 250	286	0,9

## LM 100: Overall Length 100 mm

Article No.	Clay (DN)	Core Drill (mm)	Net Weight (kg)
LM100-110	PVCu 100	122	0,3
LM100-125	PVCu 125	137	0,4
LM100-160	PVCu 150	172	0,5
LM100-200	PVCu 200	212	0,6
LM100-250	PVCu 250	262	0,6
LM100-315	PVCu 300	327	0,8
LM100-110	Cast Iron 100	122	0,3
LM100-135	Cast Iron 125	147	0,4
LM100-160	Cast Iron 150	172	0,5
LM100-210	Cast Iron 200	222	0,6
LM100-274	Cast Iron 250	286	0,7
LM100-168	GRP 150	180	0,5
LM100-220	GRP 200	232	0,6
LM100-272	GRP 250	284	0,7
LM100-118	Ductile Iron 100	130	0,4
LM100-170	Ductile Iron 150	182	0,5
LM100-222	Ductile Iron 200	234	0,6
LM100-274	Ductile Iron 250	286	0,7

## LM 150: Overall Length 150 mm

Article No.	Clay (DN)	Core Drill (mm)	Net Weight (kg)
LM150-110	PVCu 100	122	0,4
LM150-125	PVCu 125	137	0,4
LM150-160	PVCu 150	172	0,4
LM150-200	PVCu 200	212	0,5
LM150-250	PVCu 250	262	0,6
LM150-315	PVCu 300	327	0,8
LM150-110	Cast Iron 100	122	0,4
LM150-135	Cast Iron 125	147	0,4
LM150-160	Cast Iron 150	172	0,4
LM150-210	Cast Iron 200	222	0,6
LM150-274	Cast Iron 250	286	0,7
LM150-168	GRP 150	180	0,5
LM150-220	GRP 200	232	0,6
LM150-272	GRP 250	286	0,7
LM150-118	Ductile Iron 100	130	0,4
LM150-170	Ductile Iron 150	182	0,6
LM150-222	Ductile Iron 200	234	0,6
LM150-274	Ductile Iron 250	286	0,7

Other sizes are available on request.

# Puddle Flange FRK



## Product description:

Product name	Puddle Flange FRK
Product group	Pipe lead-through

- In the case of water, groundwater or elevated groundwater levels near watercourses / rivers, the puddle flange protects the structure against penetrating moisture.
- In the case of swimming pools and floor troughs, the wall collar protects against leaking water or the subsoil in front of leaking liquids.
- The independent material testing institute MFPA Leipzig GmbH has tested the Fernco puddle flanges for its sealing effect and confirmed – depending on the diameter – a seal up to 10 bar.
- Radon proof.
- All puddle flanges are made of EPDM and V2A (1.4301) as standard.
- Selected puddle flange are also available in V4A (1.4404).



Article No.	Inside Diameter D1 (mm)	Min. Pipe DA (mm)	Max. Pipe DA (mm)	Net Weight (kg)
FRK9602	21	15	25	0,2
FRK9403	29	30	34	0,2
FRK9603	31	26	35	0,2
FRK9404	38	36	44	0,2
FRK9405	49	45	56	0,3
FRK9406	60	61	69	0,4
FRK9606	62	57	71	0,4
FRK9407	71	72	81	0,4
FRK9607	74	72	84	0,4
FRK9409	84	85	96	0,4
FRK9609	89	85	101	0,4
FRK9411	105	106	118	0,5
FRK9611	109	102	121	0,5
FRK9412	120	121	135	0,5
FRK9612	124	122	138	0,5
FRK9614	139	139	155	0,6
FRK9416	154	155	170	0,6
FRK9616	159	156	176	0,6
FRK9618	180	177	190	0,6
FRK9420	195	191	212	0,7
FRK9422	215	213	237	0,8
FRK9425	245	245	270	0,9
FRK9426	275	273	300	1,0
FRK9431	310	304	341	1,1
FRK9503	Media Pipe – OD required	300	399	-
FRK9504	Media Pipe – OD required	400	499	-
FRK9505	Media Pipe – OD required	500	599	-
FRK9506	Media Pipe – OD required	600	699	-
FRK9507	Media Pipe – OD required	700	799	-
FRK9508	Media Pipe – OD required	800	899	-
FRK9509	Media Pipe – OD required	900	999	-
FRK9510	Media Pipe – OD required	1000	1099	-
FRK9511	Media Pipe – OD required	1100	1199	-
FRK9512	Media Pipe – OD required	1200	1299	-

All wall collars alternatively also available in V4A (1.4404) – plus 20 % of the list price.  
Other sizes on request.



# Drain Seal



## Product description:

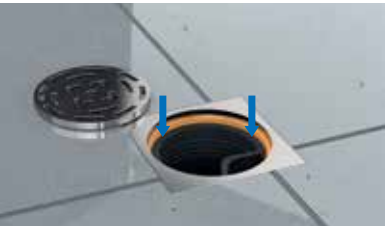
Product name	Drain Seal DS
Product group	Pipe lead-through

- Fits 100 mm pipes
- Allowing waste water to exit the building whilst blocking the return of odours, soapy suds, insects etc.
- No modifications to existing systems.
- Temperature resistant from -30 °C to +130 °C.
- Quick installation – no tools required.
- Frost resistant to -30 °C.
- No lubricant required.
- Permanent cost effective solution.

## Installation:



Remove the grate, clean the internal surface of the pipe and fold the drain seal as shown above.



Insert the drain seal into the pipe. (There is no need to place the seal too far down the pipe.)



Smooth out the fold flush to the internal surface of the pipe ensuring parallel fit to the pipe completing the seal.

Article No.	Size (DN)	Inside Diameter (mm)	Width (mm)	Ext. Dim. (bar)	Net Weight (kg)
DS100	100	98 – 102	150	105	0,2



### Insects

Stop insects entering homes via baths, sinks & showers.



### Prevent odours

Block any unwanted odours caused by standing water.



### Prevent suds

Avoid the build up of soapy suds pouring out of grates.

## Ring-Seal GK 2 bar



### Product description:

Product name	Ring-Seal GK 2 bar
Product group	Ring-Seal

- Sealing of pipes and cables against pressing water and gases.
- Sealing of pipes and cables against aggressive media.
- Sealing of pipelines in drinking water systems ([as KTW version](#))
- Use in sound insulation according to DIN 4109
- The GK seal kit **GK-20** is suitable for pressurized water up to **20 mWS** and air / gas pressure **2 bar** according to DIN 3230, part 5.

### Version for 20 mWs (2 bar)

Type	Annular Gap (mm)	Media Pipe (mm)	Installation Depth (mm)	Net Weight per Module (kg)
GK200	12,5 – 15,9	21,3 – 323,9	40	0,1
GK250	15,5 – 19,6	13,0 – 358,0	40	0,1
GK275	15,5 – 19,6	4,0 – 67,1	40	0,1
GK300	17,5 – 22,4	44,5 – 406,4	55	0,1
GK325	23,0 – 29,8	88,9 – 711,0	80	0,2
GK350	23,5 – 30,6	14,0 – 406,4	60	0,1
GK375	31,0 – 36,5	26,0 – 323,9	70	0,2
GK400	36,0 – 43,5	139,7 – 1220,0	90	0,4
GK415	36,0 – 43,5	44,5 – 323,0	90	0,3
GK425	28,0 – 35,5	134,0 – 1220,0	90	0,3
GK475	40,0 – 47,5	33,7 – 1220,0	90	0,3
GK500	58,0 – 68,5	82,5 – 1220,0	110	0,7
GK525	53,0 – 61,3	133,0 – 1220,0	110	0,6
GK575	47,0 – 56,8	90,0 – 1220,0	90	0,5
GK600	80,0 – 96,5	177,8 – 3000,0	140	1,9
GK650	71,0 – 81,5	200,0 – 1220,0	110	1,0

For the exact calculation of your required ring-seal, please contact our technical sales: +49 (0)5651 2296400.

## Ring-Seal GK 5 bar



### Product description:

Product name	Ring-Seal GK 5 bar
Product group	Ring-Seal

- Sealing of pipes and cables against pressing water and gases.
- Sealing of pipes and cables against aggressive media.
- Sealing of pipelines in drinking water systems ([as KTW version](#))
- Use in sound insulation according to DIN 4109
- The GK seal kit **GK-50** is suitable for pressurized water up to **50 mWS** and air / gas pressure **5 bar** according to DIN 3230, part 5.

### Version for 50 mWs (5 bar)

Type	Annular Gap (mm)	Media Pipe (mm)	Installation Depth (mm)	Net Weight per Module (kg)
GK200	12,5 – 15,9	21,3 – 323,9	70	0,4
GK250	15,5 – 19,6	13,0 – 358,0	70	0,4
GK275	15,5 – 19,6	4,0 – 67,1	70	0,4
GK300	17,5 – 22,4	44,5 – 406,4	90	0,9
GK325	23,0 – 29,8	88,9 – 711,0	110	0,3
GK350	23,5 – 30,6	14,0 – 406,4	110	0,2
GK375	31,0 – 36,5	26,0 – 323,9	110	0,2
GK400	36,0 – 43,5	139,7 – 1220,0	140	0,5
GK415	36,0 – 43,5	44,5 – 323,0	140	0,4
GK425	28,0 – 35,5	134,0 – 1220,0	140	0,4
GK475	40,0 – 47,5	33,7 – 1220,0	140	0,4
GK500	58,0 – 68,5	82,5 – 1220,0	150	1,0
GK525	53,0 – 61,3	133,0 – 1220,0	150	0,9
GK575	47,0 – 56,8	90,0 – 1220,0	140	0,7
GK600	80,0 – 96,5	177,8 – 3000,0	190	2,8
GK650	71,0 – 81,5	200,0 – 1220,0	160	1,4

For the exact calculation of your required ring-seal, please contact our technical sales: +49 (0)5651 2296400.

# Compact Seal PD 3 bar & 5 bar



## Product description:

Product name	Compact Seal PD 3 bar & 5 bar
Product group	Compact Seal

- Applicable for civil engineering, gas and water distribution.
- Suitable for the sealing of pipes and core holes of all diameters and can be installed in a feed pipe as well as directly in a coring drill hole.
- Ring-Seal single-layered, 30 mm (pressure-tight up to 3 bar)
- Rings and connecting elements made of stainless steel V2A / V4A.
- Against pressing water (in EPDM).
- Seals against aggressive media (in NBR).
- For use in drinking water systems (as KTW version).
- Use in sound insulation according to DIN 4190.

## Variants:



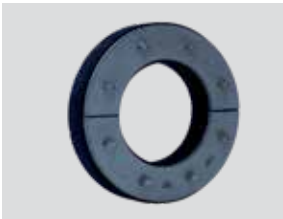
Compact Seal closed



Compact Seal multiple-penetration type



Compact Seal multiple-penetration type eccentric



Compact Seal split

## Compact Seal (3 bar)

PD, 30m WS (3 bar)

Article No.	Core Hole (mm)	max. Media Pipe (OD)** (mm)	Net Weight (kg)
PD60-30	60	22	0,4
PD70-30	70	35	0,5
PD80-30	80	45	0,6
PD100-30	100	66	1,0
PD125-30	125	87	1,5
PD150-30	150	112	2,1
PD200-30	200	162	2,8
PD250-30	250	212	4,5
PD300-30	300	260	6,0
PD350-30	350	300	7,0
PD400-30	400	350	7,5
PD450-30	450	400	10,0
PD500-30	500	450	14,0
Price per additional bore hole			
Surcharge for KTW (drinking water)		25 %	
Surcharge for NBR (Nitrile)		20 %	
Surcharge for eccentricity		15 %	

Other sizes are available on request.  
\*\* Please specify the exact media diameter for your order.

## Compact Seal (5 bar)

PD, 50 mWS (5 bar)

Article No.	Core Hole (mm)	max. Media Pipe (OD)** (mm)	approx. Net Weight (kg)
PD60-50	60	22	0,5
PD70-50	70	35	0,7
PD80-50	80	45	0,9
PD100-50	100	66	1,3
PD125-50	125	87	2,0
PD150-50	150	112	2,8
PD200-50	200	162	3,7
PD250-50	250	212	4,8
PD300-50	300	260	8,3
PD350-50	350	300	10,0
PD400-50	400	350	12,0
PD450-50	450	400	14,0
PD500-50	500	450	22,0
Price per additional bore hole			
Surcharge for KTW (drinking water)		25 %	
Surcharge for NBR (Nitrile)		20 %	
Surcharge for eccentricity		15 %	

Other sizes are available on request.  
\*\* Please specify the exact media diameter for your order.



# Compact Seal Hybrid PD-HY



### Product description:

Product name	Compact Seal Hybrid PD-HY
Product group	Compact Seal

- Particularly suitable for thin-walled and corrugated pipes
- A cold flow, which leads to cross-sectional tapering especially for polyethylene (PE) tubing, is almost impossible.
- No special tools required – fast, safe and easy installation.
- No time-delayed retightening
- Press flanges and connecting elements made of stainless steel V2A.
- Seal insert in 2-component construction made of EDPM and duroplastic elastomer with excellent chemical, mechanical and thermal properties.

### Compact Seal HYBRID, 3 bar\*

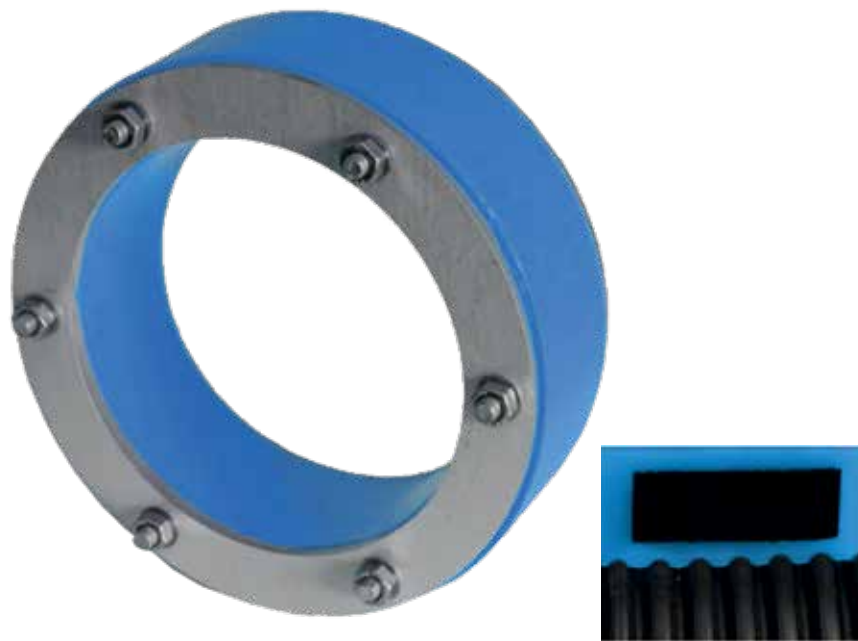
Article No.	Core Drill (mm)	max. Medi Pipe OD (mm)	Net Weight (kg)
PD80-30-HY	80	45	0,6
PD100-30-HY	100	66	1,0
PD125-30-HY	125	87	1,5
PD150-30-HY	150	112	2,1
PD200-30-HY	200	162	2,8
PD250-30-HY	250	212	4,5
PD300-30-HY	300	260	6,0
PD350-30-HY	350	300	7,0
PD400-30-HY	400	350	7,5
Surcharge for eccentricity		15 %	

### Compact Seal HYBRID, 5 bar\*

Article No.	Core Drill (mm)	max. Medi Pipe OD (mm)	approx. Net Weight (kg)
PD80-50-HY	80	45	0,9
PD100-50-HY	100	66	1,3
PD125-50-HY	125	87	2,0
PD150-50-HY	150	112	2,8
PD200-50-HY	200	162	3,7
PD250-50-HY	250	212	4,8
PD300-50-HY	300	260	8,3
PD350-50-HY	350	300	10,0
PD400-50-HY	400	350	12,0
Surcharge for eccentricity		15 %	

\*Now also available in split version – additional 15 % on the list price.

# Compact Seal Senso PD-S



## Product description:

Product name	Compact Seal Senso PD-S
Product group	Compact Seal

- Particularly suitable for thin-walled PVCu pipes and corrugated / flexible pipes.
- 2-component construction in a fixed connection tight against pressing water (pressure-tight up to 1.5 bar)
- Excellent chemical, mechanical and thermal properties.
- Press flanges and fasteners made of stainless steel.
- Carrier / core component made of solid rubber EPDM.
- Sheath component made of duroplastic elastomer with very soft hardness setting

Article No.	Core Drill (mm)	Mediapipe (mm)	Net Weight (kg)
PD100-63-S	100	63	1,0
PD125-75-S	125	75	1,5
PD150- 110-S	150	110	2,1
PD200-140-S	200	140	2,8
PD200-160-S	200	160	3,0
PD250-175-S	250	175	4,5
PD300-200-S	300	200	6,0

Compact Seal PD ZWR-System



Product description:

Product name	Compact Seal PD ZWR-System
Product group	Compact Seal

- Compact seal with ZWR insert can be used as a wall duct.
- By simply cutting out the pre-punched rubber rings, the press ring seal can be adapted on site to the present media pipe outer diameter.
- All steel pieces are made of stainless steel V2A / V4A.
- Density element made of high-quality EPDM, single-layered 30 mm / 40 mm.
- Use in sound insulation according to DIN 4190
- Compression ring inserts do not assume any support bearing function and serve exclusively for the pressure-tight, elastic sealing of cables. Slight axial movements of the media pipes are permissible.

Installation:



Article No.	Incisions for occupancy (mm)	Net Weight (kg)	Width Rubber single-layered (mm)
Compact Seal ZWR – EPDM insert with 1 hole f. cable / pipe			
PD-ZWR-100	20 / 25 / 30 / 35 / 40 / 45 / 50 / 55 / 60 / 64	1,0	40
PD-ZWR-100 SPLIT	20 / 25 / 30 / 35 / 40 / 45 / 50 / 55 / 60 / 64	1,0	40
PD-ZWR-125	63 / 76 / 90	1,0	30
PD-ZWR-150	63 / 76 / 90 / 110	1,3	30
PD-ZWR-200	110 / 125 / 140 / 160	1,9	30
Compact Seal ZWR – Multiple feedthrough – EPDM inserts 5-32 mm with flare, elastomer 30 mm			
PD-MFD-100	3× 5 / 10 / 15 / 20 / 25 / 32	1,0	30
PD-MFD-100 SPLIT	3× 5 / 10 / 15 / 20 / 25 / 32	1,0	30
PD-MFD-100	4× 5 / 10 / 15 / 20 / 25 / 32	1,0	30
PD-MFD-100 SPLIT	4× 5 / 10 / 15 / 20 / 25 / 32	1,0	30
PD-MFD-125 SPLIT	5× 5 / 10 / 15 / 20 / 25 / 32	1,0	30
PD-MFD-150 SPLIT	4× 5 / 10 / 15 / 20 / 25 / 32	1,3	30
PD-MFD-150 SPLIT	8× 5 / 10 / 15 / 20 / 25 / 32	1,3	30
PD-MFD-200 SPLIT	12× 5 / 10 / 15 / 20 / 25 / 32	1,9	30
Compact Seal ZWR – Multiple feedthrough – EPDM inserts 20-64 mm, elastomer 40 mm			
PD-MFD-250	2× 20 / 25 / 30 / 35 / 40 / 45 / 50 / 55 / 60 / 64	6,0	40
PD-MFD-250 SPLIT	2× 20 / 25 / 30 / 35 / 40 / 45 / 50 / 55 / 60 / 64	6,0	40
PD-MFD-250	3× 20 / 25 / 30 / 35 / 40 / 45 / 50 / 55 / 60 / 64	6,0	40
PD-MFD-250 SPLIT	3× 20 / 25 / 30 / 35 / 40 / 45 / 50 / 55 / 60 / 64	6,0	40
PD-MFD-300	4× 20 / 25 / 30 / 35 / 40 / 45 / 50 / 55 / 60 / 64	8,0	40
PD-MFD-300 SPLIT	4× 20 / 25 / 30 / 35 / 40 / 45 / 50 / 55 / 60 / 64	8,0	40



## Transition Ring Typ RSR



Product description:

Product name	Transition Ring RSR
Product group	Articles for Clay Pipes

- For the connection of sewage pipes from different sewage pipe systems to clay pipe or concrete sockets without seal.
- The rolling ring consists of a cellular rubber which is a closed cell foamy elastomer.

Article No.	Size DN	Thickness (mm)	Net Weight (kg)
RSR100/16	100	16	0,1
RSR100/18	100	18	0,1
RSR100/20	100	20	0,2
RSR125/20	125	20	0,2
RSR125/22	125	22	0,2
RSR125/24	125	24	0,2
RSR150/20	150	20	0,2
RSR150/22	150	22	0,2
RSR150/24	150	24	0,3
RSR200/24	200	24	0,3
RSR200/26	200	26	0,4

Other sizes and cross sections available on request.

## Rolling Ring Typ ÜGR



Product description:

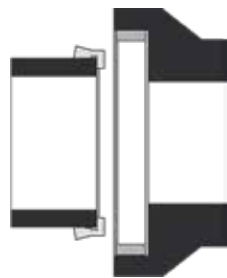
Product name	Ring ÜGR
Product group	Articles for Clay Pipes

- Made of a cellular elastomer
- Used in pipe sockets with a missing sleeve seal.
- The calculation always depends on the annular space and the resultant pressure.

Article No.	Size DN	In sleeves with internal diameters (mm)	Cross Section (mm)	Application	Net Weight (kg)
ÜGR100/28	100	156 – 162	28	Asbestos Cement	0,3
ÜGR100/32	100	156 – 162	32	PVCu	0,3
ÜGR125/34	125	184 – 190	34	Cast Iron	0,6
ÜGR125/38	125	184 – 190	38	PVCu	0,6
ÜGR125/44	125	184 – 190	44	PVCu	0,6
ÜGR150/38	150	214 – 222	38	PVCu / Asbestos Cement / Cast Iron	0,6
ÜGR200/38	200	274 – 282	38	Asbestos Cement	0,7

Other sizes and cross sections available on request.

## P-Ring PR



### Product description:

Product name	P-Ring PR
Product group	Articles for Clay Pipes

- Sealing elements for the tip end of clay pipes and moldings
- After the cutting of a pipe, the factory installed pipe-end encapsulation made of polyurethane is lost. The Flexseal fitting rings replace this sealing element.

Article No.	For connecting (DN)	Functional area (mm)	Net Weight (kg)
PR200N	200 normal load	238 – 244	0,4
PR200H	200 high-performance	249 – 256	0,6
PR250N	250 normal load	295 – 302	0,6
PR250H	250 high-performance	312 – 319	0,7
PR300N	300 normal load	350 – 357	0,7
PR300H	300 high-performance	373 – 381	0,9
PR400N	400 normal load	481 – 490	1,1
PR400H	400 high-performance	484 – 493	1,1
PR500N	500 normal load	577 – 587	1,4
PR500H	500 high-performance	600 – 610	1,8
PR600N	600 normal load	679 – 693	1,8
PR600H	600 high-performance	713 – 728	2,5

## Ü-Ring ÜR



### Product description:

Product name	Ü-Ring ÜR
Product group	Articles for Clay Pipes

- For transitions of spigot ends from different pipe material such as PVCu, Cast Iron, Ductile Iron, Asbestos Cement to clay sockets with the connection system F, with lip seal “L” should be connected.

Article No.	Size DN	OD (mm)	Type of Pipe	Net Weight (kg)
ÜR 100-Cast Iron/PVCu	100	110	Cast Iron/PVCu	0,3
ÜR 125-Cast Iron	125	135	Cast Iron	0,4
ÜR 150-Cast Iron/PVCu	150	160	Cast Iron/PVCu	0,6
ÜR 150-Ductile Iron/Eternit	150	170	Ductile Iron/Eternit	0,4
ÜR 200-Cast Iron	200	200	Cast Iron	1,1

## B-Ring, BR (radius fitting)



### Product description:

Product name	B-Ring BR
Product group	Articles for Clay Pipes

- Sealing ring in conjunction with a clay socket to form a saddle on clay main sewers.
- The Flexseal DN 150 drilling ring is the only one on the German market that has a patented, radius-fitting sealing lip, which is a significant advantage in sealing. Therefore, it can already be connected to Steinzeug main pipes from DN 300 (BR 200 – from DN 400).

Article No.	Clay Pipe DN	Core Drill (mm)	Net Weight (kg)
BR150	1 150 (with radius fitting sealing lip)	200	0,2
BR200	200	257	0,4

## Drain Test Plug DTP



### Product description:

Product name	Drain Test Plug DTP
Product group	Articles for all Pipe Systems

- Ideal for pressure tests of sewer pipes through test connection with hollow screw.
- Simple and quick installation by inserting it into the pipe end (spigot end or socket).
- Can also be used as a temporary or permanent pipe closure.
- Material: aluminium plates, EPDM rubber seal, on request also available in NBR, resistant to oil and petrol.

Article No.	Size DN	Test thread (Inch)	Minimum (mm)	Maximum (mm)	Net Weight (kg)
DTP40	40	1 1/2	38	50	0,2
DTP50	50	2	49	62	0,2
DTP65	65	2 1/2	62	77	0,3
DTP75	75	3	73	89	0,3
DTP85	85	3 1/2	84	103	0,3
DTP100/5	100	1/2	94	110	0,4
DTP115	125 (PVCu)	1/2	108	120	0,5
DTP125/5	125	1/2	121	138	0,8
DTP150/5	150	1/2	146	163	0,7
DTP180	200 (PVCu)	1	165	190	1,5
DTP200	200	1	191	211	1,6
DTP225	250 (PVCu)	1	216	235	1,9
DTP250	250	1	244	260	2,4
DTP300	300	1	269	314	3,4
DTP350	350	1	340	375	5,5
DTP400	400	1	390	425	6,5
DTP500	500	2	495	525	14,0
DTP600	600	2	590	630	16,5

Other sizes available on request.

## Lubricant GM



### Product description:

Product name	Lubricant GM
Product group	Articles for all Pipe Systems

- According to Safety Data Sheet 91/155/EWG
- It is completely biodegradable.
- Available for plastic, clay and concrete pipes.
- Different pack sizes available.

Article No.	Application	Quantity (ml / kg)	Packaging Unit (Stk.)	Net Weight (kg)
GM30-K	Plastic	30 g tube	1	0,1
GM250-K	Plastic	250 g tube	50	0,3
GM500-K	Plastic	500 g tube	24	0,6
GM1-K	Plastic	1 kg tin	18	1,1
GM1-KT	Plastic	1 kg tube	12	1,1
GM3-K	Plastic	3 kg tin	1	3,2
GM5-K	Plastic	5 kg tin	1	5,3
GM1	Clay	1 kg tin	18	1,1
GM3	Clay	3 kg tin	1	3,2
GM5	Clay	5 kg tin	1	5,3
GM5-B	Concrete	5 kg tin	1	5,3

**Attention:** For small quantities increased shipping costs may arise.



## End Cap C



### Product description:

Product name	End Cap C
Product group	Articles for all Pipe Systems

- For the temporary or permanent closure of pipe tip ends.
- They are suitable for all types of pipes as long as the outer diameter matches the OD range.

Article No.	Size DN	Range (mm)	Pressure (bar)	Net Weight (kg)
036C	–	28 – 36	0,6	0,1
045C	40	37 – 45	0,6	0,1
048C	40	43 – 50	0,6	0,1
056C	50	48 – 56	0,6	0,1
060C	50	54 – 63	0,6	0,1
068C	–	58 – 68	0,6	0,1
070C	50	60 – 70	0,6	0,2
076C	70	67 – 76	0,6	0,2
085C	–	80 – 90	0,6	0,2
092C	–	82 – 92	0,6	0,2
100C	75	80 – 98	0,6	0,2
112C	100	98 – 112	0,6	0,3
125C	100	110 – 125	0,6	0,3
135C	100	125 – 135	0,6	0,3
142C	–	130 – 145	0,6	0,5
162C	150	150 – 162	0,6	0,6
165C	150	155 – 165	0,6	0,6
173C	150	163 – 173	0,6	0,4
181C	150	160 – 180	0,6	0,5
190C	150	180 – 190	0,6	0,6
215C	200	200 – 220	0,6	0,7
230C	200	215 – 230	0,6	0,7
250C	225	235 – 250	0,6	0,8
274C	250	260 – 275	0,6	0,8
328C	300	315 – 330	0,6	1,0
358C	350	345 – 360	0,6	1,0

## Noise Reduction Ring AKP/AKRP



### Product description:

Product name	Noise Reduction Ring AKR / Noise Reduction Paste AKRP
Product group	Articles for all Pipe Systems

- The Fernco noise reduction rings reliably prevent the rattling of the manhole covers as a damping insert in sewer chute frames and protect the cover supports.
- Material: Thermoplast
- According to DIN 19584 / DIN 4290

Article No.	Description	Outside (mm)	Inside (mm)	Net Weight (kg)
AKR19584	Manhole Cover, Class D, produced since 1980	682	600	0,2
AKR4290	Manhole Cover, Class B, produced until 1980	665	600	0,2
AKR4055	Noise Reduction Ring, oval	321x236		0,2
AKRP-430	Noise Reduction Paste, 430g bag			0,5

The anti-rattle paste consists of an environmentally friendly 2-component liquid plastic. It is an individually adaptable, self-curing paste for all sizes of rattling covers.

### Product benefits:

- Reliably prevents rattling noises
- Adapts exactly to the shape
- Noise Reduction Ring is quickly installed

### Delivery form:

Anti-rattle paste AKRP-430 approx. 430 g for 1 manhole cover up to approx. 70 cm diameter or for rectangular covers approx. approx. 200 cm for rectangular covers.

### Installation instructions:

1. Remove the rattling lid from the frame.
2. Remove coarse dirt from the contact surface of the frame and the cover.
3. Apply the release agent from chamber 1 with a cloth thinly on the bottom and sides of the lid.
4. Open and remove the clip on the bag between chamber 2 and 3 and remove it.
5. Mix the two plastic components thoroughly by kneading in the bag.
6. Cut off one corner of the bag with a pair of scissors (cut length approx. 1 cm). Pour the paste from the bag into the box frame or the lid support in a bead-like manner to a thickness of approx. 7 mm.
7. Immediately place the lid in the frame before the paste hardens.

## AccessPoint PDCCTV



### Product description:

Product name	AccessPoint PDCCTV
Product group	Articles for all Pipe Systems

- For pressureless waste water and rainwater pipes of 75 to 200 mm outer diameter and a wall thickness of up to 7 mm.
- Can be used as a subsequent inspection opening for clogging / deposits in the pipe as well as for a suspended pipe to replace a cleaning opening.
- Quick and easy assembly.
- Reusable, can be installed and removed multiple times.
- Pressure density up to 1 bar.
- Supplied in a set of 10 pieces including accessories. Also available separately on request.

Article No.	Content	Net Weight (kg)
PDCCTVKit	10x Access Points, 1x De-burring tool, 1x 6 mm Allen key, 1 x 54 mm Diamond Tipped Core Drill	2,5
PDCCTV10	10 x Access Points / without tool	1,6
PDCCTV20	20 x Access Points / without tool	2,9
PDCCTV500	500 x Access Points / without tool	65,0

### Installation:



## Drain Dye DTD



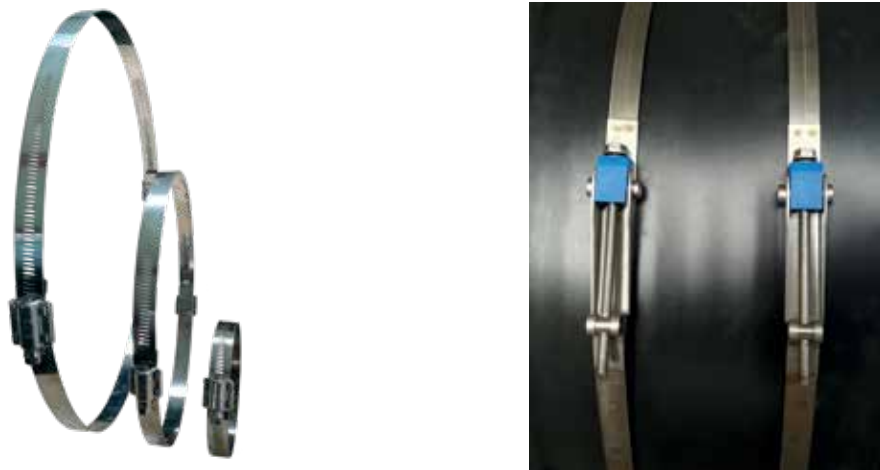
### Product description:

Product name	Drain Dye DTD
Product group	Articles for all Pipe Systems

- Drain Dye is a non-toxic and odourless drain tracer product for finding leaks, drain damage, contamination and water pathways.
- Odourless product in powder form that is non-toxic to humans and animals.
- The Drain Dye adds a strong colour to water – use just a teaspoon of Drain Dye with 10 litres of water.
- Whether a sewerage pipe or grey water system, the Drain Dye is a quick and simple system, giving the information you need to proceed with a project.

Article No.	Content	Net Weight (kg)
DTDBLUE	Drain Dye, blue - 200 g colour batch-powder for 15.000 – 20.000 l	0,3
DTDGREEN	Drain Dye, green - 200 g colour batch-powder for 15.000 – 20.000 l	0,3
DTDORANGE	Drain Dye, orange - 200 g colour batch-powder for 15.000 – 20.000 l	0,3
DTDPURPLE	Drain Dye, purple - 200 g colour batch-powder for 15.000 – 20.000 l	0,3
DTDRED	Drain Dye, red - 200 g colour batch-powder for 15.000 – 20.000 l	0,3
DTDYELLOW	Drain Dye, yellow - 200 g colour batch-powder for 15.000 – 20.000 l	0,3

## Clamp bands for individual application



### Product description:

Product name	Clamp bands for individual application
Product group	Articles for all Pipe Systems

- Individual dimensions available for diameters up to several metres.
- Several clamping units on request, resulting in a high adjustment range.
- Durable and reusable due to proven spot-welded connections.
- From 300 mm stud connections M 8/SW 13.
- Smaller dimensions with worm thread clamping unit.

Fernco clamp bands are available in two steel versions:

**Standard version:**

Austenitic, stainless steel DIN 1.4301 AISI 304 V2A

**Special version:**

Austenitic, stainless steel DIN 1.4404 AISI 316 V4A

### Clamp bands available in the following widths and materials

Width (mm)	Material thickness (mm)	Material
20	0,9	V2A (1.4301)
20	0,9	V4A (1.4404)
100	0,8	V2A (1.4301)
100	0,8	V4A (1.4404)
200	0,8	V2A (1.4301)
200	0,8	V4A (1.4404)
245	0,8	V2A (1.4301)

## Accessories – Installation aids for easy assembly



### Product description:

Product name	Accessories – Installation aids for easy assembly
Product group	Articles for all Pipe Systems

- For some gaskets, we supply the appropriate installation tool as standard. For example, a T-hex wrench for the PA saddle series.
- The ESH 150 and ESH 200 mounting aids make the installation of the FA-saddle series considerably easier.
- You can also obtain the necessary drill bits for the various core bores in plastic main pipes and shafts and their corresponding receptacles.
- The torque wrenches are ideal for our coupling series TC, SC, LC and 2B1.

Article No.	Content
TKS	Full Set Torque Wrench for Couplings TC, SC, LC and 2B1
TDM 14	Torque Wrench 6-30 Nm
TN 15	Hexagon Spanner Head 1/4 Inch x 8 mm
TRS 17	Tubular Box Wrench 3/8 Inch x 13 mm
TRS 13	Tubular Box Wrench 12 x 13 mm
TA 16	Adaptor 1/4 x 3/8 Inch
ESH 150	Drive-in Tool for FA-Element DN 150
ESH 200	Drive-in Tool for FA-Element DN 200
L 965 MW	Mounting Tool for L 965
BK-K 90/127	Core Bit for PVCu pipes INSITU DN 110 (Core Hole 127 mm)
BK-K 90/138	Core Bit for PVCu pipes LSK DN 100 (Core Hole 138 mm)
BK-K 90/172	Core Bit for PVCu pipes LM DN 150 (Core Hole 172 mm)
BK-K 90/177	Core Bit for PVCu pipes INSITU DN 150 (Core Hole 177 mm)
BK-K 90/186	Core Bit for PVCu pipes LSK DN 150 (Core Hole 186 mm)
BK-K 90/217	Core Bit for PVCu pipes INSITU DN 200 (Core Hole 217 mm)
BK-K 90/226	Core Bit for PVCu pipes LSK DN 200 (Core Hole 226 mm)
BK-AUF150	Mounting Hexagon for Core Bit
TCC	Circle Cutter 30–200 mm for PVCu



## Elbows & Tees EPDM & PVC



### Product description:

Product name	Elbows & Tees
Product group	Plumbing

- Ideal for working in confined spaces e.g. under a bath or shower tray.
- Extra length and flexibility of the Elbows and Tees provides compensation for shortened or misaligned pipes.
- Quick, versatile and easy to use solution for many domestic drain, waste and vent plumbing problems.
- No special tools required to install Tees, Elbows.
- Ideal for repairs, providing a watertight seal.
- Can be installed onto any pipe material.
- All Elbows & Tees are available in V4A at extra charge, selected products are available nitrile quality (oil and petrol resistant).

#### EPDM Tees

Article No.	Range (mm)	Color
PT38	30 – 38	black
PT50	40 – 50	black
PT60	50 – 60	black
PT90	78 – 90	black
PT118	106 – 118	black

#### EPDM Elbows 90°

Article No.	Range (mm)	Color
PE38	30 – 38	black
PE50	40 – 50	black
PE60	50 – 60	black
PE90	78 – 90	black
PE118	106 – 118	black

#### PVC Tees

Article No.	Range (mm)	Color
048T	41 – 48	black
048TG	41 – 48	grey
060T	54 – 63	black
060TG	54 – 63	grey
085T	80 – 89	black
085TG	80 – 89	grey
112T	105 – 116	black
112TG	105 – 116	grey

#### PVC Elbows 90°

Article No.	Range (mm)	Color
048L	41 – 48	black
048LG	41 – 48	grey
060L	54 – 63	black
060LG	54 – 63	grey
085L	80 – 89	black
085LG	80 – 89	grey
112L	105 – 116	black
112LG	105 – 116	grey

## Flexible Qwick Trap FT



### Product description:

Product name	Flexible Qwick Trap, FT
Product group	Plumbing

- Replaces 32 mm or 40 mm plastic or metal siphons.
- Qwik Trap provide a long-lasting, leak-free connection that resists freeze damage.
- To clean, squeeze the product – drain tools or drain cleaners are not needed.
- Its flexible PVC material adjusts to the pipes misalignment and installs quickly and securely with a common screwdriver or nut driver.

Article No.	Range (mm)	Net Weight (kg)
FT038	32 – 40 / 40	0,1

## Multi-Surface Repair Patch, Pow-R Patch



### Product description:

Product name	Multi-Surface Repair Patch, Pow-R Patch
Product group	Plumbing

- For repairing, sealing and reinforcing all pipes of different materials.
- Each kit will adhere to PVC, metal, wood, fiberglass, plastic and is perfect for flat and round surface repairs.
- Unique self-contained mixing pouch.
- No tools required.
- Excellent adhesion to most materials.
- Heat resistant to 215 °C.

Article No.	Dimensions (mm)	Net Weight (kg)
FPP100150	10 × 15	0,1

## Pow-R Wrap



### Product description:

Product name	Pow-R Wrap
Product group	Plumbing

- Permanent and economical repair, which works on virtually every kind of pipe and hose.
- Can be used on all fluid bearing pipes and hoses including potable water, steam, air, gas, sewerage and fuel hydraulics.
- It's an easy alternative to traditional methods such as cementing, soldering, welding, sleeving and replacement.
- The wrap will work on wet, dry, clean, dirty or corroded pipes, and even under water (salt or fresh).
- Can be sanded and painted if desired.
- Repairs virtually any material: copper, rubber, Plastics, Fibreglass, concrete etc.

Article No.	Range (mm)	Net Weight (kg)
FPW25	up to OD 25 mm	0,1
FPW80	up to OD 80 mm	0,2
FPW150	up to OD 150 mm	0,5

### Installation:



# Retrofit Non-Return Valve NRV



## Product description:

Product name	Retrofit Non-Return Valve, NRV
Product group	Plumbing

- For simple retrofit installation into existing manholes.
- Simple pushfit installation into existing manhole – takes approximately 80 % less time to fit than a conventional valve.
- Two sizes available to suit DN110 and DN160 pipes.
- Products available for clay and plastic pipe systems.
- Protects against pests, such as rats and other vermin, as well as backwater.

Article No.	Size DN	Net Weight (kg)
NRV4	100 mm Non-Return Valve for DN 110 Plastic Pipe	0,4
NRV100	100 mm Non-Return Valve for pipes with an ID of 97-106 mm	0,9
NRVCLAY	100 mm Non-Return Valve for DN 100 Clay pipe	0,5
NRV150	150 mm Non-Return Valve for pipes with an ID of 148-153 mm	1,2

# Air Admittance Valve F



## Product description:

Product name	Air Admittance Valve, F
Product group	Plumbing

- Maintenance-free Air Admittance Valve made of impact-resistant ABS plastic for installation inside buildings.
- Free air intake without screens or grilles through a permanently elastic membrane. Meets requirements of DIN EN 12380 : 2002.
- Removes the need to penetrate the outer roof shell.
- No thermal bridge, therefore no dangerous condensation on the pipe.
- In case of fire no stack-effect, this delays the spread of fire.
- No unnecessary insect screens or other maintenance-intensive barriers.

Article No.	Size DN	Net Weight (kg)
FAF32W	Air Admittance Valve DN 32/40/50 Universal	0,3
FAV110W	Air Admittance Valve DN 110 Solvent Wld	0,3
FRG110W	Air Admittance Valve DN 110 / Pushfit	0,3

# Drain Coupling PVC



### Product description:

Product name	Drain Coupling, PVC
Product group	Plumbing

- For pipes with an outer diameter from 23 mm to 219 mm.
- Effective solution for joining pipes with similar outside diameters, ideal for all repairs.
- Quick, versatile and easy to use solution for many domestic drain, waste and vent plumbing problems.
- Suitable for above and below ground applications.
- Can be installed on any pipe material.
- No special tools required.
- Provides a watertight seal.



### Applications

- Repair of existing pipe systems by replacing short sections of pipe.
- Can be used to connect plain ended pipes.
- Use as an adapter between pipes of different materials with similar outside diameters.

Article No.	Range (mm)	Width (mm)	Color
027-027B	23 – 27	60	black
027-027G	23 – 27	60	grey
E028-028G	21 – 28	60	grey
035-035B	28 – 35	60	black
035-035G	28 – 35	60	grey
E038-038BL*	31 – 38	60	black
E038-038G	31 – 38	60	grey
041-041	38 – 41	88	black
E042-042BL*	32 – 42	86	black
E042-042G*	32 – 42	86	grey
E045-045BL*	38 – 45	86	black
E045-045G*	38 – 45	86	grey
049-049	44 – 49	88	black
E050-050BL*	40 – 50	86	black
E050-050G*	40 – 50	86	grey
E058-058BL*	50 – 58	86	black
E058-058G*	50 – 58	86	grey
059-059	54 – 59	101	black
062-062	56 – 62	88	black
E063-063G*	55 – 63	86	grey
E068-068G*	60 – 68	86	grey
070-070	65 – 70	101	black

Article No.	Range (mm)	Width (mm)	Color
E085-085BL*	75 – 85	100	black
E085-085G*	75 – 85	100	grey
086-086	80 – 86	101	black
090-090	80 – 90	101	black
E090-090BL*	80 – 90	100	black
E090-090G*	80 – 90	100	grey
E095-095G*	85 – 95	100	grey
101-101	95 – 101	101	black
112-112	101 – 112	101	black
E112-112G*	101 – 112	100	grey
121-121	111 – 121	101	black
E122-122G*	112 – 122	100	grey
127-127	118 – 127	101	black
E130-130BL*	120 – 130	100	black
E130-130G*	120 – 130	100	grey
133-133	127 – 133	101	black
142-142	136 – 142	101	black
149-149	138 – 149	101	black
162-162	152 – 162	101	black
176-176	165 – 176	101	black
188-188	180 – 188	101	black
219-219	206 – 219	101	black

\*Standard in stainless steel V2A, 1.4301 (SS 304)



# Adaptor Coupling PVC



### Product description:

Product name	Adaptor Coupling, PVC
Product group	Plumbing

- For pipes with an outer diameter from 25 mm to 162 mm.
- Effective solution for joining pipes with different outside diameters, ideal for all repairs.
- Quick, versatile and easy to use solution for many domestic drain, waste and vent plumbing problems.
- An inexpensive option when a shielded coupling is not required.
- Can be installed on any pipe material.
- No special tools required.
- Provides a watertight seal.



### Applications

- Can be used to connect plain ended pipes
- Repair of existing pipe systems by replacing short sections of pipe.
- An inexpensive option when a shielded coupling is not required.

Article No.	OD – Range 1 (mm)	OD – Range 2 (mm)	Width (mm)	Color
E040-032G	32 – 40	25 – 32	86	grey
E045-038G	38 – 45	30 – 38	86	grey
048-038	43 – 48	32 – 38	57	black
049-041	44 – 49	38 – 41	88	black
E050-042BL	40 – 50	32 – 40	86	black
E050-042G	40 – 50	32 – 40	86	grey
E050-032G	42 – 50	25 – 32	86	grey
E058-038G	50 – 58	30 – 38	86	grey
E058-045BL	50 – 58	37 – 45	86	black
E058-045G	50 – 58	38 – 45	86	grey
059-048	54 – 59	44 – 48	101	black
060-034	53 – 60	29 – 34	57	black
060-038	53 – 60	32 – 38	57	black
061-047	56 – 61	44 – 47	88	black
070-060	65 – 70	57 – 60	100	black
084-060	79 – 84	56 – 60	101	black
E085-058G	75 – 85	50 – 58	100	grey
E085-068G	75 – 85	60 – 68	100	grey
086-047	80 – 86	44 – 47	101	black
E090-063G	80 – 90	53 – 61	100	grey
101-089	95 – 101	85 – 89	101	black
111-049	104 – 111	44 – 49	101	black
111-085	104 – 111	76 – 85	101	black

Article No.	OD – Range 1 (mm)	OD – Range 2 (mm)	Width (mm)	Color
E112-050G	100 – 112	40 – 50	100	grey
E112-085BL	100 – 112	75 – 85	100	black
E112-045G	102 – 112	38 – 45	100	grey
E112-085G	102 – 112	75 – 85	100	grey
113-059	106 – 113	53 – 59	101	black
E122-112BL	110 – 122	100 – 112	100	black
E122-112G	112 – 122	102 – 112	100	grey
123-111	114 – 123	101 – 111	101	black
127-115	118 – 127	104 – 115	101	black
E130-122G	120 – 130	112 – 122	100	grey
133-112	111 – 133	104 – 112	101	black
133-084	111 – 133	79 – 84	101	black
135-115	113 – 135	107 – 115	101	black
140-087	131 – 140	80 – 87	101	black
142-111	136 – 142	101 – 111	101	black
143-109	136 – 143	101 – 109	101	black
160-133	149 – 160	111 – 133	152	black
163-111	155 – 163	101 – 111	152	black
187-111	177 – 187	101 – 111	152	black
190-162	177 – 190	152 – 162	152	black
199-111	187 – 199	101 – 111	152	black
214-158	203 – 214	149 – 158	152	black
241-162	228 – 241	152 – 162	152	black

Standard in stainless steel V2A, 1.4301 (SS 304)

# Lateral connections overview



	1. FA 150 ST	2. FA 150 U	3. FA 150 B	4. FA 200 B	5. PA Saddle	6. UA Saddle
Scope of application	Clay pipe, up to max. 50 mm wall thickness	Concrete pipe, clay pipe from 23 mm wall thickness	Concrete pipe, clay pipe from 50 mm wall thickness	Concrete pipe, clay pipe from 50 mm wall thickness	Plastic structured wall pipes	Plastic structured wall pipes from DN 700
Required core hole	172 ± 1 mm	172 ± 1 mm	172 +/- 1 mm	232 ± 1 mm	177 ± 1 mm	177 ± 1 mm
DN connection pipe, regular	Clay DN 150	Clay DN 150	Clay DN 150	Clay DN 200	PVC DN 150	PVC DN 150
DN Main pipe	250 N – 350H VTR 200 – 300	WS from 23 mm	DN 300 – 1200	DN 400 – 1200	DN 300 – 600	from DN 700
Minimum wall thickness	22 mm	23 mm	50 mm	50 mm	from 50 mm (DN 300)*	*
Maximum wall thickness	approx. 40 mm	approx. 50 mm	150 mm	150 mm	up to 91 mm (DN600)*	*
Pipe Outer diameter	296 – 430 mm	300 – 1500 mm	375 – 1500 mm	550 – 1500 mm	depending on nominal width	depending on nominal width
Connections of other pipe materials can be made using compensating rings						
Cast iron / PVC DN 150	BC 12/190	FR 150	FR 150	--	--	--
Ductile iron/UR II/ GRP DN 150	BC 08/170	FR 150	FR 150	--	--	--
PE – HD DN 150	BC 04/180	FR 150	FR 150	--	--	--
Euro-Top DN 150	BC 06/178	FR 150	FR 150	--	--	--
Cast iron DN 200	--	--	--	FR 200	--	--
Ductile iron / UR II / GRP DN 200	--	--	--	FR 200	--	--
PVC DN 200 (alt)	--	--	--	FR 200	--	--
PVC /Cast iron DN 200	--	--	--	FR 200	--	--

# Pipe dimension table

## Clay pipes, normal load series according to DIN EN 295

Size DN	Clay	DN 1230	EuroCeramic EuroTrad	Gresala	Harsch	Clay jacking pipes	Size DN
100	131 ± 3	131 ± 3	131 ± 3	131 ± 3	131 ± 3		100
125	159 ± 3,5	159 ± 3,5	160 ± 2	159 ± 3,5	159 ± 3,5		125
150	186 ± 4	186 ± 4	186 ± 2	186 ± 2	186 ± 4	213 +0/-4	150
200	242 ± 5	242 ± 5	243 ± 3	242 ± 3	242 ± 5	276 +0/-6	200
250	299 ± 6	296 ± 6	302 ± 3	300 ± 4	299 ± 6	360 +0/-6	250
300	355 ± 7	350 ± 7	360 ± 4	353 ± 4	355 ± 7	406 +0/-10	300
350	417 ± 7	404 ± 7		417 ± 7			350
400	486 ± 8	460 ± 8	480 ± 5	480 ± 4		556 +0/-12	400
450		524 ± 8					450
500	581 ± 9	581 ± 9	587 ± 6			661 +0/-15	500
600	687 ± 12	687 ± 12	691 ± 8	585 ± 4		766 +0/-18	600
700	831 ± 15	790 ± 15		697 ± 5		870 +0/-24	700
800	949 ± 17	895 ± 17		795 ± 15		970 +0/-24	800
900	1008 ± 20	1002 ± 20		895 ± 17			900
1000	1119 ± 23	1109 ± 23				1275 +0/-30	1000

## Clay pipes, high load series according to DIN EN 295

Size DN	Clay	DN 1230	EuroCeramic EuroTrad	EuroCeramic EuroTop	Gresala	Size DN
100				122 ± 1,5		100
125						125
150				178 ± 1,5		150
200	254 ± 5	262 ± 5	258 ± 5	237 ± 2	255 ± 4	200
250	318 ± 6	318 ± 6	315 ± 6	296 ± 3	324 ± 4	250
300	376 ± 7	374 ± 7	375 ± 7	357 ± 4	380 ± 4	300
350	430 ± 7	430 ± 7				350
400	492 ± 8	490 ± 7	487 ± 8		492 ± 4	400
450	548 ± 8	548 ± 8				450
500	609 ± 9	607 ± 9	609 ± 9		609 ± 9	500
600	725 ± 12	721 ± 12	729 ± 12			600
700	862 ± 12	831 ± 15				700
800	964 ± 12	941 ± 17				800
900						900
1000	1273 ± 15					1000

## Other types of pipe

Size DN	Concrete	PVC	Cast Iron BML	Ductile Iron	GRP	HDPE	Robukan	Ultrarib II	Eternit DN Kl. B	Size DN
100	ca. 144	110	110	118	116	110			124	100
125		125	135	144	142	125/140			149	125
150	ca. 210	160	160	170	168	160/180	174	170	176	150
200	ca. 260	200	210	222	220	200/225	235	225	230	200
250	ca. 320	250	274	274	272	250/280	292	280	284	250
300	ca. 450	315	326	326	324	315	346	335	338	300
350		355		378	376	355	399		392	350
400	ca. 550	400	429	429	427	400	461	450	448	400
450		450		480	478	450			502	450
500	ca. 650	500	532	532	530	500/560	587	560	556	500
600	ca. 800	630	635	635	616	630	693		664	600
700	ca. 880	710		738	718	710			778	700
800	ca. 1000	800		842	820	800			888	800
900	ca. 1120	900		945	924	900			998	900
1000	ca. 1240	1000		1048	1026	1000			1108	1000
1100	ca. 1360			1152	1099					1100
1200	ca. 1480	1200		1255	1229	1200			1328	1200

All outside diameter specifications are given in millimetres.  
We cannot guarantee the correctness of these dimensions!

# Materials – Stainless Steel & Elastomere

## Stainless Steel

Fernco offers two different steel grades. By default all steel parts of a coupling are made of austenitic stainless steel according to DIN 1.4301 (V2A).

The term "stainless steel" includes a series of steel alloys whose corrosion resistance is based on their chromium content. The chromium contained in the alloy oxidizes and forms a hard, invisible surface protective layer which prevents further corrosion until the surface is damaged, after which this process repeats itself.

Research projects in various countries have shown that austenitic stainless steel, which basically contains 17% chromium and 8% nickel, has good results for the usual soil types and has a service life of up to 100 years.

In poorly drained pebbles, in the presence of industrial and mining waste, and in cases where the soil and groundwater have chlorides with a concentration of more than 1000 ppm, this steel quality tends to be pitting in some cases.

**For this reason, Fernco offers two different steel grades.**

By default, all steel parts of the couplings are made of austenitic stainless steel according to DIN 1.4301 (V2A).

For the load-bearing surfaces described on the left, as well as for special seals, we also equip our couplings with a steel quality according to DIN 1.4404 (V4A).

An increased molybdenum addition in the alloy improves the corrosion resistance of this steel by a multiple.

**Standard version:**

Austenitic, stainless steel DIN 1.4301 AISI 304 V2A

**Special version:**

Austenitic, stainless steel DIN 1.4404 AISI 316 V4A

## Elastomere

Depending on the DIN specifications, our seals are manufactured from elastomers according to DIN 681-1 and DIN 681-2.

For most of our seals we use a high-quality EPDM rubber. Natural or synthetic rubbers are primarily used for the production. Our EPDM mixture contains various additives, which ensure that the properties required for the sealing technology are permanently retained.

The EPDM rubber is vulcanized by heating. After this process, it is extremely elastic. Deformations can be carried out as often as desired without changing the initial shape. When the forces acting on the rubber decrease, EPDM almost returns to its initial shape.

EPDM is resistant to most acids and bases found in sewage (detailed inventory is available upon request).

**EPDM (Ethylen Propylen-Dien-Monomer)**

EPDM is a terpolymer elastomer and belongs to the copolymers with a saturated polymer backbone. It has very good aging resistance also with UV- and ozone-load. It is resistant to dilute acids and thus the ideal sealing material for civil engineering applications.

**NBR (Nitril-Butadien-Rubber)**

NBR is always used when the seal comes into contact with oils and fuels. However, in this material the elastic behavior deteriorates.

*ATTENTION: If you want to use our NBR seals for wastewater purposes, please contact our Technical Sales Department. There you will be informed if this seal is suitable for this purpose.*

**SBR (Styrol-Butadien-Rubber)**

As one of the best known synthetic rubbers, SBR possesses similar properties as NR (Natural Rubber) but loses its elasticity considerably.

**NR (Natural Rubber)**

NR essentially consists of polyisoprene and is obtained from the white milk juice (latex) of certain species of plants growing in tropical areas, mainly from the family of the wolfsmilk plants. It has very good elastic properties, but ages very quickly.

Characteristics	EPDM	NBR	SBR	NR
Ozone Resistance	excellent	adequate	adequate	adequate
Acid Resistance	excellent	adequate	satisfactory	satisfactory
Liquor Resistance	excellent	adequate	satisfactory	satisfactory
Electric Resistance	good	poor	good	excellent
Impact Rebound	satisfactory	satisfactory	satisfactory	good
Elongation at Break	satisfactory	good	good	excellent
Permeability	adequate	good	adequate	poor
Oil Resistance	adequate	good	poor	unsatisfactory
Fuel Resistance	poor	good	unsatisfactory	unsatisfactory
Temperature Window	- 50° to +150°	- 30° to +100°	- 40° to +80°	- 40° to +80°
Short-term Peak Temperature	+ 160°	+ 130°	+ 130°	+ 130°

# Performance & Accreditations

## Performance

**Due to the high quality of the material used, our couplings are suitable both for pipe laying and in the ground!**

Your expected lifetime is 100 years! Additional protection measures may be necessary for sealing sleeves made of stainless steel of grade V2A (1.4301), when they are laid in a filled floor, e.g. In landfills of

industry, mud walls of mines, and in cases where the soil or ground water has a high chloride content. For these applications, sealing sleeves with V4A (1.4404) steel components should be used.

**Pressure Table:** If properly installed, our sleeves will withstand the following pressures:

Designation	Size	Pressure-tight up to
TC (Type 2A)	all	0,6 bar
SC (Type 2B)	all	2,5 bar
2B1 ALL-IN-ONE (Type 2B)	all	2,5 bar
LC (Type 2B)	up to LC 980	1,5 bar
LC (Type 2B)	up to LC 1380	1,0 bar
LC (Type 2B)	up to LC 1780	0,6 bar
SCW (Type 2B)	all	2,5 bar
LCW (Type 2B)	up to LCW 980	1,5 bar
LCW (Type 2B)	up to LCW 1380	1,0 bar
LCW (Type 2B)	up to LCW 1780	0,6 bar
MAG (Type 2B)	up to MAG 385	4,0 bar
MAG (Type 2B)	up to MAG 620	2,5 bar
MAG (Type 2B)	up to MAG 980	1,5 bar
MAG (Type 2B)	up to MAG 1380	1,0 bar
MAG (Type 2B)	up to MAG 1780	0,6 bar
WRC (Type 2B)	all	–
MWRC (Type 2 B)	all	–
IC (ICON)	all	0,5 bar
ICP	all	2,5 bar
IA	all	1,0 bar
DC/PC/TDC (Type 1)	all	0,6 bar
AC/PAC/TAC	all	0,6 bar

## Accreditations

All products of Fernco GmbH are subject to constant quality control by our quality management. In doing so, intensive tests are carried out at the critical points in the production cycle, based on the valid guidelines and our production standards.

Our quality management is documented and certified according to ISO 9001: 2015.

Since Fernco is a worldwide supplier, we are, of course, in possession of the necessary certificates and certificates for the most important countries.











Reliable connections –  
worldwide!

## Your direct connection to us...



Fernco GmbH  
Hessenring 31  
37269 Eschwege



General  
+49 (0)5651 2296 -400



Enquiries  
[sales@fernco.de](mailto:sales@fernco.de)

Enquiries Plumbing  
[sanitaer@fernco.de](mailto:sanitaer@fernco.de)

Orders  
[order@fernco.de](mailto:order@fernco.de)  
+49 (0)5651 2296 -410

## ...or visit us online



[www.fernco.eu](http://www.fernco.eu)



[www.findmycoupling.com](http://www.findmycoupling.com)



[linkedin / Fernco GmbH](#)



[facebook / Fernco GmbH](#)



[youtube / Fernco GmbH](#)