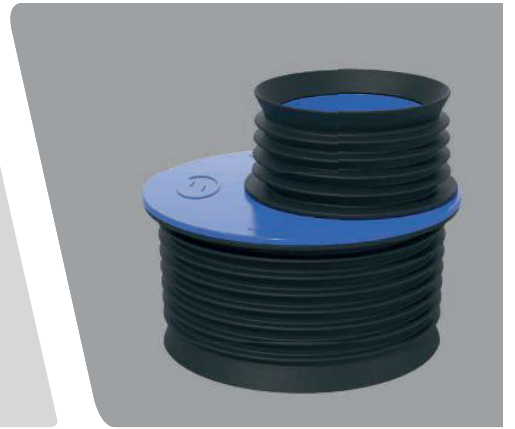
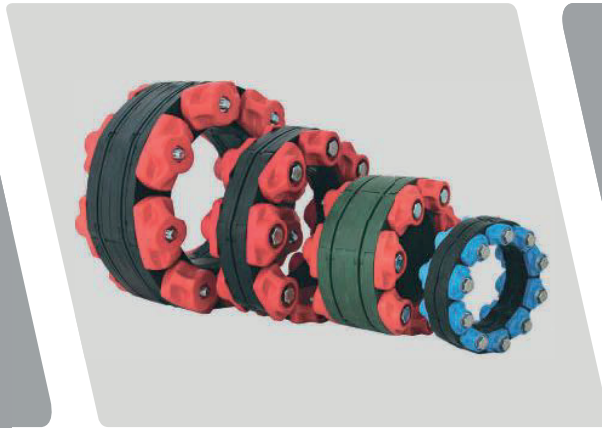


Product Catalogue

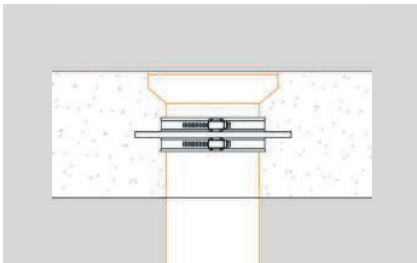


Lateral Connection

Puddle Flange, FRK

Flexseal Puddle Flange against penetrating moisture

The Flexseal puddle flange is used where pipes are to be passed through walls, masonry and floor slabs. In the case of water, groundwater or elevated groundwater levels near watercourses / rivers, the Flexseal puddle flange placed on the pipe in the center of the masonry protects the building against penetrating moisture. In the case of swimming pools and floor troughs, the wall collar protects against leaking water or the subsoil in front of leaking liquids.



Benefits

- Internal diameter with tight sealing lips
- The Flexseal puddle flange guarantees a secure hold.
- The pronounced profile depth at the puddle flange ensures a stable hold in the filling material even under extreme installation conditions.
- Circumferential groove ensures correct fit of the tensioning straps.
- Clamp bands made of V2A, W 1.4301
- The elasticity of the puddle flange allows installation on pipes made of different materials.
- **The independent material testing institute MFPA Leipzig GmbH has tested the Flexseal puddle flanges for its sealing effect and confirmed - depending on the diameter - a seal up to 10 bar.**
- Radon resistant

Article No.	Inside Diameter D1 (mm)	Min. Pipe DA (mm)	Max. Pipe DA (mm)	Net Weight (kg)
FRK 9403	29	30	34	0,20
FRK 9404	38	39	45	0,20
FRK 9405	48	49	55	0,26
FRK 9406	60	61	69	0,38
FRK 9407	71	72	81	0,38
FRK 9409	84	85	96	0,36
FRK 9411	105	106	118	0,44
FRK 9412	120	121	135	0,46
FRK 9416	154	155	170	0,58
FRK 9420	195	196	215	0,70
FRK 9422	215	216	237	0,80
FRK 9425	245	246	270	0,90
FRK 9426	275	276	300	1,00
FRK 9431	310	311	340	1,10
FRK 9440	435	436	470	1,60
FRK 9503	Media Pipe - OD required	300	399	-
FRK 9504	Media Pipe - OD required	400	499	-
FRK 9505	Media Pipe - OD required	500	599	-
FRK 9506	Media Pipe - OD required	600	699	-
FRK 9507	Media Pipe - OD required	700	799	-
FRK 9508	Media Pipe - OD required	800	899	-
FRK 9509	Media Pipe - OD required	900	999	-
FRK 9510	Media Pipe - OD required	1000	1099	-
FRK 9511	Media Pipe - OD required	1100	1199	-
FRK 9512	Media Pipe - OD required	1200	1299	-

On request also available in **V4A (1.4401)** for an additional charge.

Ring-Seals

Ring-Seals, GK 2 bar

Construction work and sealing kits

If pipelines or cables are routed through overhead and underground walls, through ceilings or in so-called protective pipes, it must be ensured that the pipe connections are permanently sealed. Neither pressing water nor gas may penetrate from the outside via the construction or protective pipe seal.

Constructions and inserts allow simple, fast and clean pipe and cable routing through walls, ceilings and protective tubes. The density inserts are pressure-tight and prevents the transmission of heat and sound.



Benefits

- Sealing of pipes and cables against pressing water and gases.
- Sealing of pipes and cables against aggressive media.
- Sealing of pipelines in drinking water systems (as KTW version)
- Use in sound insulation according to DIN 4109
- Subsequent installation (all seal inserts can be separated)

The GK seal kit **GK-20** is suitable for pressurized water up to **20 mWS** and air / gas pressure **2 bar** according to DIN 3230, part 5.



Version for 20 mWs (2 bar)

Type	Annular Gap (mm)	Media Pipe (mm)	Installation Depth (mm)	Net Weight per Module (kg)
GK 200	12,5 - 15,9	21,3 - 323,9	40	0,10
GK 250	15,5 - 19,6	13,0 - 358,0	40	0,10
GK 275	15,5 - 19,6	4,0 - 67,1	40	0,10
GK 300	17,5 - 22,4	44,5 - 406,4	55	0,10
GK 325	23,0 - 29,8	88,9 - 711,0	80	0,20
GK 350	23,5 - 30,6	14,0 - 406,4	60	0,10
GK 375	31,0 - 36,5	26,0 - 323,9	70	0,20
GK 400	36,0 - 43,5	139,7 - 1220,0	90	0,40
GK 415	36,0 - 43,5	44,5 - 323,0	90	0,30
GK 425	28,0 - 35,5	134,0 - 1220,0	90	0,30
GK 475	40,0 - 47,5	33,7 - 1220,0	90	0,30
GK 500	58,0 - 68,5	82,5 - 1220,0	110	0,70
GK 525	53,0 - 61,3	133,0 - 1220,0	110	0,60
GK 575	47,0 - 56,8	90,0 - 1220,0	90	0,50
GK 600	80,0 - 96,5	177,8 - 3000,0	140	1,90
GK 650	71,0 - 81,5	200,0 - 1220,0	110	1,00

For the exact calculation of your required ring-seal, please contact our technical sales: +49 (0)5651 228822 and 228823

Ring-Seals

Ring-Seals, GK 5 bar

Construction work and sealing kits

If pipelines or cables are routed through overhead and underground walls, through ceilings or in so-called protective pipes, it must be ensured that the pipe connections are permanently sealed. Neither pressing water nor gas may penetrate from the outside via the construction or protective pipe seal.

Constructions and inserts allow simple, fast and clean pipe and cable routing through walls, ceilings and protective tubes. The density inserts are pressure-tight and prevents the transmission of heat and sound.

Benefits

- Sealing of pipes and cables against pressing water and gases.
- Sealing of pipes and cables against aggressive media.
- Sealing of pipelines in drinking water systems (as KTW version)
- Use in sound insulation according to DIN 4109
- Subsequent installation (all seal inserts can be separated)



The GK seal kit **GK-50** is suitable for pressurized water up to **50 mWS** and air / gas pressure **5 bar** according to DIN 3230, part 5.



Version for 50 mWs (5 bar)

Type	Annular Gap (mm)	Media Pipe (mm)	Installation Depth (mm)	Net Weight per Module (kg)
GK 200	12,5 - 15,9	21,3 - 323,9	70	0,40
GK 250	15,5 - 19,6	13,0 - 358,0	70	0,40
GK 275	15,5 - 19,6	4,0 - 67,1	70	0,40
GK 300	17,5 - 22,4	44,5 - 406,4	90	0,90
GK 325	23,0 - 29,8	88,9 - 711,0	110	0,30
GK 350	23,5 - 30,6	14,0 - 406,4	110	0,20
GK 375	31,0 - 36,5	26,0 - 323,9	110	0,20
GK 400	36,0 - 43,5	139,7 - 1220,0	140	0,50
GK 415	36,0 - 43,5	44,5 - 323,0	140	0,40
GK 425	28,0 - 35,5	134,0 - 1220,0	140	0,40
GK 475	40,0 - 47,5	33,7 - 1220,0	140	0,40
GK 500	58,0 - 68,5	82,5 - 1220,0	150	1,00
GK 525	53,0 - 61,3	133,0 - 1220,0	150	0,90
GK 575	47,0 - 56,8	90,0 - 1220,0	140	0,70
GK 600	80,0 - 96,5	177,8 - 3000,0	190	2,80
GK 650	71,0 - 81,5	200,0 - 1220,0	160	1,40

For the exact calculation of your required ring-seal, please contact our technical sales: +49 (0)5651 228822 and 228823

Ring-Seals

Compact Seal, PD 3 bar

Ring-Seal in compact design against water penetration

The Flexseal compact seals are universally applicable for civil engineering, gas and water distribution.

They are suitable for the sealing of pipes and core holes of all diameters and can be installed in a feed pipe as well as directly in a coring drill hole.

By tightening the nuts, the metal plates are pressed against the rubber sealing ring. As a result, the elastomer ring expands uniformly on all sides and reliably seals the pipe.

In addition, these density inserts serve for guiding and acoustic decoupling.

Benefits

- Ring-Seal single-layered, 30 mm (pressure-tight up to 3 bar)
Ring-Seal double layered, 60 mm (pressure-tight up to 5 bar), see the next page
- Rings and connecting elements made of stainless steel V2A / V4A
- Against pressing water (in EPDM)
- Seals against aggressive media (in NBR)
- For use in drinking water systems (as KTW version)
- Particularly suitable for thin-walled and corrugated pipes (As hybrid version) (single-layered available), see page 33
- Use in sound insulation according to DIN 4190



Fig. Ex. cable bushing

Compact Seal (3 bar)				Pressure Plate Sealing Element 30 mm Screw Version
PD, 30m WS (3bar)				
Article No.	Core Hole (mm)	max. Media Pipe (OD)** (mm)	approx. Net Weight (kg)	
PD 60-30	60	34	0,40	
PD 70-30	70	35	0,50	
PD 80-30	80	45	0,60	
PD 100-30	100	66	1,00	
PD 125-30	125	87	1,50	
PD 150-30	150	112	2,10	
PD 200-30	200	162	2,80	
PD 250-30	250	212	4,50	
PD 300-30	300	260	6,00	
PD 350-30	350	300	7,00	
PD 400-30	400	350	7,50	
PD 450-30	450	400	10,00	
PD 500-30	500	450	14,00	
Price per additional bore hole				
Surcharge for KTW (drinking water)				25%
Surcharge for NBR (Nitrile)				20%
Surcharge for eccentricity				15%

Other sizes are available on request.

** Please specify the exact media diameter for your order.

Ring-Seals

Compact Seal, PD 5 bar

Ring-Seal in compact design against water penetration

The Flexseal compact seals are universally applicable for civil engineering, gas and water distribution.

They are suitable for the sealing of pipes and core holes of all diameters and can be installed in a feed pipe as well as directly in a coring drill hole.

By tightening the nuts, the metal plates are pressed against the rubber sealing ring. As a result, the elastomer ring expands uniformly on all sides and reliably seals the pipe.

In addition, these density inserts serve for guiding and acoustic decoupling.

Benefits

- Ring-Seal double layered, 60 mm (pressure-tight up to 5 bar),
- Rings and connecting elements made of stainless steel V2A / V4A
- Against pressing water (in EPDM)
- Dicht gegen aggressive Medien (in NBR)
- For use in drinking water systems (as KTW version)
- Use in sound insulation according to DIN 4190

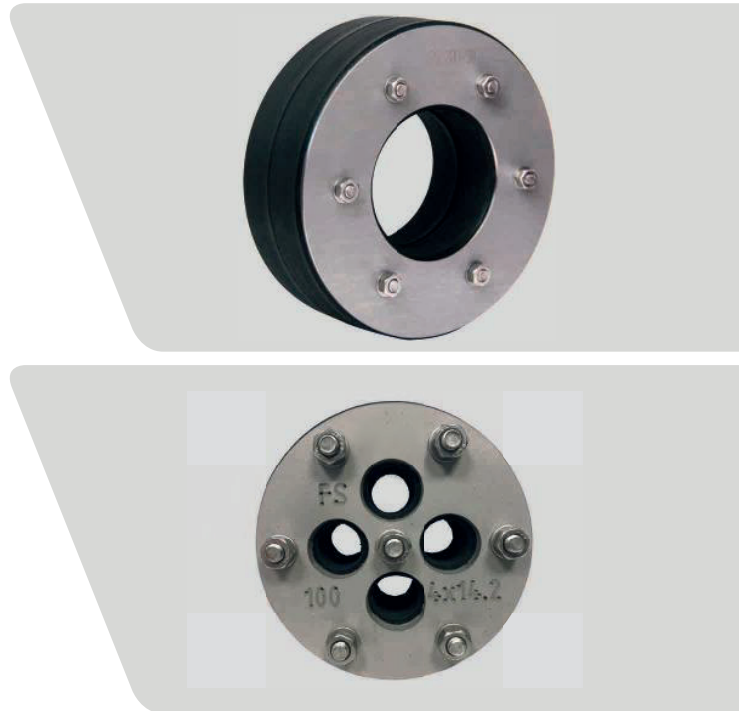


Fig. Ex. cable bushing

Compact Seal (5 bar) PD, 50 mWS (5 bar)				Pressure Plate Sealing Element 30 mm Screw Version
Article No.	Core Hole (mm)	max. Media Pipe (OD)** (mm)	approx. Net Weight (kg)	
PD 60-50	60	34	0,50	
PD 70-50	70	35	0,70	
PD 80-50	80	45	0,90	
PD 100-50	100	66	1,30	
PD 125-50	125	87	2,00	
PD 150-50	150	112	2,80	
PD 200-50	200	162	3,70	
PD 250-50	250	212	4,80	
PD 300-50	300	260	8,30	
PD 350-50	350	300	10,00	
PD 400-50	400	350	12,00	
PD 450-50	450	400	14,00	
PD 500-50	500	450	22,00	
Price per additional bore hole				
Surcharge for KTW (drinking water)				25%
Surcharge for NBR (Nitrile)				20%
Surcharge for eccentricity				15%

Other sizes are available on request.

**Please specify the exact media diameter for your order.

Ring-Seals

Compact Seal, PD ZWR-System

Adaptation to media pipe OD on-site

The Flexseal compact seal with ZWR insert can be used as a wall duct.

By simply cutting out the pre-punched rubber rings, the press ring seal can be adapted on site to the present media pipe outer diameter.

Compression ring inserts do not assume any support bearing function and serve exclusively for the pressure-tight, elastic sealing of cables. Slight axial movements of the media pipes are permissible.

Benefits

- Tight against water and gases
- Available in dimensions DN 100, DN 125, DN 150 and DN 200
- Various versions also available in split version
- All steel pieces are made of stainless steel V2A / V4A
- Density element made of high-quality EPDM, single-layered 30 mm / 40 mm
- Use in sound insulation according to DIN 4190
- Cost-effective storage



Article No.	Incisions for occupancy (mm)	Net Weight (kg)	Width Rubber single-layered (mm)
Compact Seal ZWR - EPDM insert with 1 hole f. cable / pipe			
PD-ZWR-100	20 / 25 / 30 / 35 / 40 / 45 / 50 / 55 / 60 / 64	1,00	40
PD-ZWR-100 SPLIT	20 / 25 / 30 / 35 / 40 / 45 / 50 / 55 / 60 / 64	1,00	40
PD-ZWR-125	63 / 76 / 90	1,00	30
PD-ZWR-150	63 / 76 / 90 / 110	1,30	30
PD-ZWR-200	110 / 125 / 140 / 160	1,90	30
Compact Seal ZWR - Multiple feedthrough - EPDM inserts 5-32 mm with flare, elastomer 30 mm			
PD-ZWR-100	3x 5 / 10 / 15 / 20 / 25	1,00	30
PD-ZWR-100 SPLIT	3x 5 / 10 / 15 / 20 / 25	1,00	30
PD-ZWR-100	4x 5 / 10 / 15 / 20 / 25	1,00	30
PD-ZWR-100 SPLIT	4x 5 / 10 / 15 / 20 / 25	1,00	30
PD-ZWR-125 SPLIT	5x 5 / 10 / 15 / 20 / 25	1,00	30
PD-ZWR-150 SPLIT	4x 5 / 10 / 15 / 20 / 25	1,30	30
PD-ZWR-150 SPLIT	8x 5 / 10 / 15 / 20 / 25	1,30	30
PD-ZWR-200 SPLIT	12x 5 / 10 / 15 / 20 / 25	1,90	30
Compact Seal ZWR - Multiple feedthrough - EPDM inserts 20-64 mm, elastomer 40 mm			
PD-ZWR-250	2x 20 / 25 / 30 / 35 / 40 / 45 / 50 / 55 / 60 / 64	6,00	40
PD-ZWR-250 SPLIT	2x 20 / 25 / 30 / 35 / 40 / 45 / 50 / 55 / 60 / 64	6,00	40
PD-ZWR-250	3x 20 / 25 / 30 / 35 / 40 / 45 / 50 / 55 / 60 / 64	6,00	40
PD-ZWR-250 SPLIT	3x 20 / 25 / 30 / 35 / 40 / 45 / 50 / 55 / 60 / 64	6,00	40
PD-ZWR-300	4x 20 / 25 / 30 / 35 / 40 / 45 / 50 / 55 / 60 / 64	8,00	40
PD-ZWR-300 SPLIT	4x 20 / 25 / 30 / 35 / 40 / 45 / 50 / 55 / 60 / 64	8,00	40

Ring-Seals

Compact Seal, Hybrid, PD-HY

Type Hybrid: Particularly suitable for thin-walled and corrugated pipes

Pipe Seal Hybrid (PE) Density insert in 2-component construction with external round frame component made of solid rubber, medium hardness, in combination with internal density insert made of Duoplast elastomer with very soft hardness adjustment.

The pressure force absorption, transmission and distribution are made by the medium-hard rubber grommets - the sealing of the media tube is achieved by the soft inner ring.

The extra soft density insert adapts perfectly to the media pipe surface contours. High compressive forces are not required. A cold flow, which leads to cross-sectional tapering especially for polyethylene (PE) tubing, is almost impossible.

Due to its very good adhesion to the media pipe surface, the ring seal already sits securely in the annular space even at very low tightening torque of the screw connection - against penetrating water and gas. The installation can be carried out without a special tool (torque wrench) by way of a visual contact indicator (blue bead) at the press flange edges.



NEW On request, the hybrid version is now also available with double sealing pressure-tight up to 5 bar.

Compact Seal HYBRID (3bar)				Pressure Plate: V2A Sealing Element 30 mm / EPDM / Duroplast Screw: V2A Version: closed
PD, 30 mWS (3 bar)				
Article No.	Core Drill (mm)	max. Medi Pipe OD (mm)	approx. Net Weight (kg)	
PD 80-30	80	45	0,60	
PD 100-30	100	66	1,00	
PD 125-30	125	87	1,50	
PD 150-30	150	112	2,10	
PD 200-30	200	162	2,80	
PD 250-30	250	212	4,50	
PD 300-30	300	260	6,00	
PD 350-30	350	300	7,00	
PD 400-30	400	350	7,50	

All ring seals now also available in 5 bar. Please talk to our technical sales: +49 (0)5651 228822 and 22882.