



CONNECT AND PROTECT

nVent CADDY Pyramid

Rooftop Support System

nvent



CADDY

Plumbing & HVAC Applications



WHY BUY NVENT CADDY PYRAMID

FOR ENGINEERS AND CONSULTANTS:

CHALLENGE:

- Properly support heavy loads
- Minimize the chance of point loading or abrading the roof membrane
- Ensure chemical compatibility with anything you place on the roof membrane

PYRAMID SOLUTION:

- Pyramid offers a broad portfolio compatible with most roof surfaces, including single-ply, bituminous, metal and spray foam
- Pyramid provides excellent load distribution with some of the industry's best load ratings
- Pyramid minimizes point loading and roof abrasion
- Pyramid is UV stable, corrosion resistant, and durable over an extensive temperature range



Electrical Applications



Step Over and Walkways Applications



WHY BUY PYRAMID

FOR BUILDING OWNERS:

CHALLENGE:

- Roofs not only protect some of the most valuable assets, they often represent a significant cost to replace and maintain
- Substandard materials and methods can increase the chance of roof damage
- Increasingly, roofs are seen as prime real estate and are being utilized for equipment placement, alternative energy systems, and as green space

PYRAMID SOLUTION:

- Pyramid is extremely roof compatible
- Pyramid is designed to minimize the chance of damage to roofs
- Pyramid is fast and easy to install, minimizing costs
- Pyramid provides an aesthetically pleasing, flexible engineered solution designed to meet the challenges of densely populated roofs



WHY BUY PYRAMID

FOR CONTRACTORS AND INSTALLERS:

CHALLENGE:

- Meet the project scope and stay within budget
- Provide a high quality installation
- Need a fast and easy to install solution
- Adapt to a broad range of applications and roof materials

PYRAMID SOLUTION:

- Pyramid is designed to get installers on and off the roof quickly
- Pyramid creates an aesthetically pleasing, high quality solution
- Pyramid offers a broad portfolio of solutions that simplify material management

Equipment Support Applications



Pyramid rooftop supports are a surface mounted solution for supporting electrical and mechanical applications on a variety of roof surfaces.

They offer superior load capacity and dramatically reduce installation time by replacing slow, heavy and labor-intensive methods for support of pipe, conduit, duct, cable tray and equipment.

Unlike wood blocks, Pyramid supports are specifically designed for rooftop applications, incorporating unique materials and finishes that protect roof membranes and provide superior corrosion protection.

Hot-dip galvanized for superior corrosion protection

UV stabilized for long lasting performance



Foam bottom offers low abrasion interface for better roof membrane protection

Compatible with roof surfaces including single ply, bituminous, metal and spray foam

"Our clients' roofs are a significant investment. Protecting these assets requires the use of engineered solutions that can withstand the test of time, which is why we have standardized on the Pyramid family of roof top supports."

Chris Denman, Vice President and Partner
Roof Management, LLC

**LOAD
RATING**

- Fewer supports required for the same load
- Less material, less labor

**LOAD
DISTRIBUTION**

- Minimizes point loading and stress concentrations
- Reduces likelihood of roof membrane damage

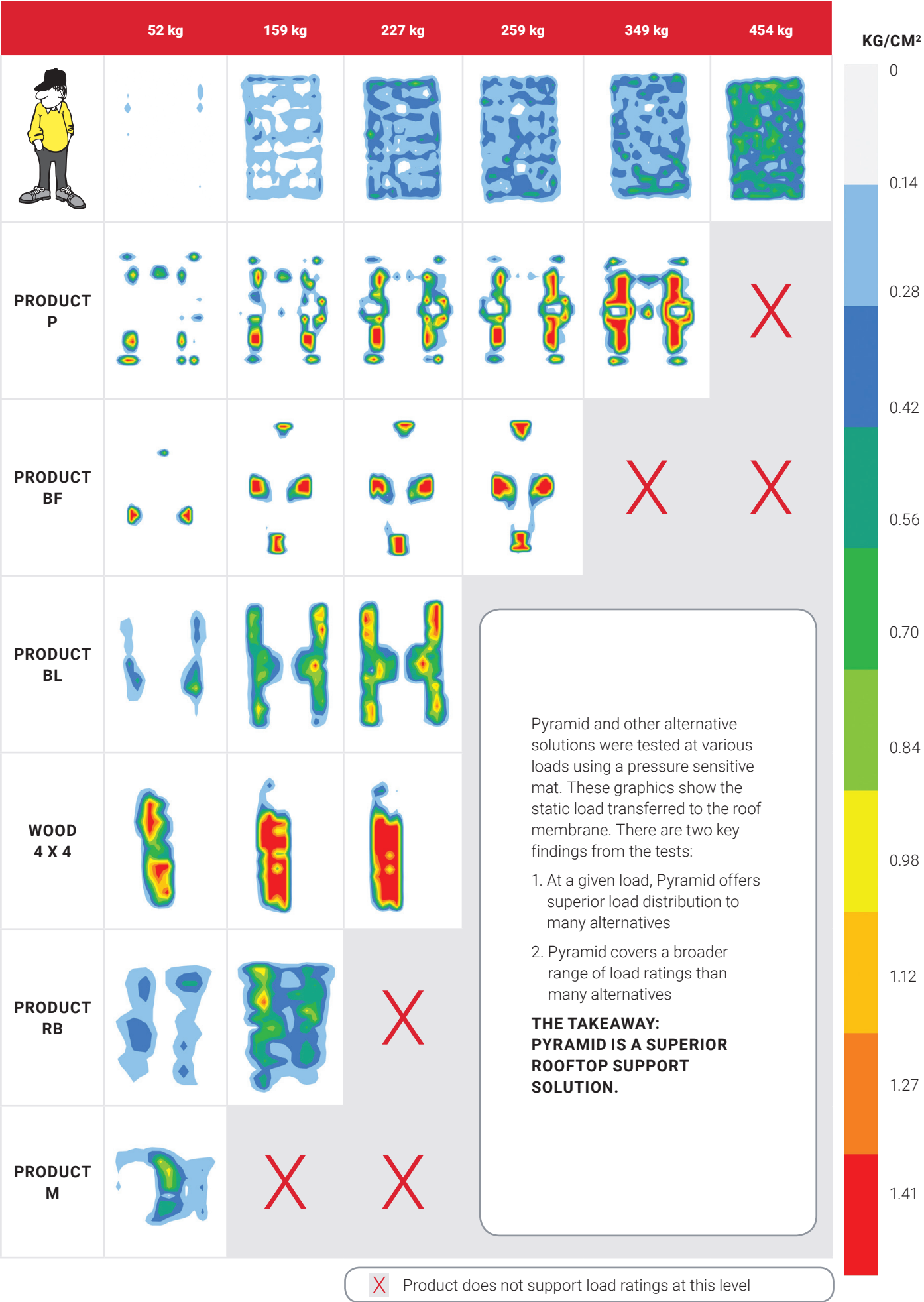
**FOAM
BOTTOM**

- Provides roof membrane compatibility
- Eliminates the need for a separation sheet

**CADDY QUALITY
AND INNOVATIONS**

- More than 14 years of designing and building high-quality rooftop support solutions
- Continuously innovating for over 110 years

Rooftop Supports: Load Distribution



X Product does not support load ratings at this level

nVent CADDY Pyramid ST Strut-Based Supports

Pyramid ST Strut-Based Supports offer an ideal solution for mounting electrical and mechanical applications to strut. Superior load distribution and a low abrasion foam interface combine to ensure that the roof membrane is protected despite varying roof surfaces and shifting caused by expansion and contraction.

- Provides superior load distribution, even with varying rooftop surfaces
- Ready to use out of the box, saving installation time and labor
- Compatible with roof surfaces including single ply, bituminous, metal and spray foam
- Foam bottom offers low abrasion interface for better roof membrane protection
- Hot-dip galvanized and UV stabilized for long lasting performance



PYRAMID ST FIXED STRUT SUPPORTS

Provides a fixed-height mounting platform with 152 mm, 254 mm, or 457 mm of usable strut length.

- Provides superior support for pipe, conduit, duct, cable tray and equipment
- Multiple sizes and load ratings offer the ability to tailor the solution to the application
- Easy to transport to the roof

Material: Polyethylene, Polypropylene, Steel
Finish: Hot-dip galvanized
Temperature: -45 to 65 °C
Static Load Safety Factor: 3:1

Part Number	Article Number	Strut Length	Height	Static Load
PSF6C	360463	152 mm	122 mm	1,334 N
PSF10C	360464	254 mm	122 mm	4,450 N
PSF10D	360465	254 mm	163 mm	4,450 N
PSF16C	360466	406 mm	122 mm	6,670 N
PSF16D	360467	406 mm	163 mm	6,670 N

"We have standardized on Pyramid ST Series Supports for our cable tray installations. They are extremely simple to use and provide a lower total installed cost than wood blocks, concrete slabs, and other engineered solutions."

Alain Lemaire, Achats
et Réalisation | G2EI



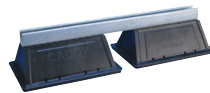
PYRAMID ST ADJUSTABLE STRUT SUPPORTS

Allows elevation changes of up to 457 mm off the roof surface with 254 mm or 406 mm of usable strut length.

- Height adjustability provides effective navigation of pipe, conduit, duct and cable tray around obstructions
- Multiple sizes and load ratings offer the ability to tailor the solution to the application

Material: Polyethylene, Polypropylene, Steel
Finish: Hot-dip galvanized
Temperature: -45 to 65 °C
Static Load Safety Factor: 3:1

Part Number	Article Number	Strut Length	Height	Static Load
PSA10CH13	360468	254 mm	152 – 330 mm	4,450 N
PSA16AH18	360469	406 mm	178 – 457 mm	6,670 N



PYRAMID ST BRIDGE ASSEMBLIES

Provides a fixed-height mounting platform off the roof surface with 610 mm to 1524 mm of usable strut length.

- Ideal for supporting multiple pipe runs, cable tray and air handling units
- Multiple sizes and load ratings offer the ability to tailor the solution to the application

Material: Polyethylene, Polypropylene, Steel
Finish: Hot-dip galvanized
Temperature: -45 to 65 °C
Static Load Safety Factor: 3:1

Part Number	Article Number	Strut Length	Height	Static Load
PSB24A	360475	610 mm	142 mm	8,900 N
PSB30A	360476	762 mm	142 mm	8,900 N
PSB36A	360477	914 mm	142 mm	8,900 N
PSB42A	360478	1,067 mm	142 mm	13,340 N
PSB48A	360479	1,219 mm	142 mm	13,340 N
PSB60A	360480	1,524 mm	142 mm	13,340 N

Static loads are assumed to be uniformly distributed.



PYRAMID ST FIXED STRUT SUPPORT KIT

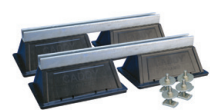
Kit provides a fixed-height mounting platform for A/C split units 4.8" (122 mm) off the roof surface with 16" (406 mm) of usable strut length.

- Kit includes two Pyramid ST Fixed Strut Supports and four Strut T-Bolts
- Ideal for mounting A/C split units

Material: Polyethylene; Polypropylene; Steel
Finish: Hot-Dip Galvanized; Electro galvanized
Temperature: -45 to 65 °C
Static Load Safety Factor: 3:1

Part Number	Article Number	Strut Length	Height	Static Load
PSF16KM8	360507	406 mm	122 mm	13,340 N

Static load must be stable and uniformly distributed across both supports.



PYRAMID ST BRIDGE ASSEMBLY KIT

Kit provides a fixed-height mounting platform for A/C split units 5.6" (142 mm) off the roof surface with 24" (610 mm) of usable strut length.

- Kit includes two Pyramid ST Bridge Assemblies and four Strut T-Bolts
- Ideal for mounting A/C split units

Material: Polyethylene; Polypropylene; Steel
Finish: Hot-Dip Galvanized; Electro galvanized
Temperature: -45 to 65 °C
Static Load Safety Factor: 3:1

Part Number	Article Number	Strut Length	Height	Static Load
PSB24KM8	360508	610 mm	142 mm	17,800 N

Static load must be stable and uniformly distributed across both supports.

Pyramid RL Roller-Based Supports

Pyramid RL Roller-Based Supports offer an ideal solution for mechanical piping systems. Long-lasting performance is ensured by providing polymeric rollers for corrosion free rotation. Pyramid RL Roller-Based Supports are specially designed to avoid formation of flat spots and seized rollers during expansion and contraction. Superior load distribution and a low abrasion foam interface combine to ensure that the roof membrane is protected despite uneven roof surfaces and shifting caused by expansion and contraction.

- Polymeric rollers ensure corrosion free rotation
- Foam bottom offers low abrasion interface for better roof membrane protection
- Compatible with roof surfaces including single ply, bituminous, metal and spray foam
- Ready to use out of the box, saving installation time and labor
- Hot-dip galvanized and UV stabilized for long lasting performance

SUPPORT ACCESSORY:



RETAINER STRAP

Provides additional support to ensure that the pipe stays in-line with the roller.

- Prevents pipe from being dislodged from roller supports
- Innovative twist-lock design allows for easy installation without requiring hardware removal

Material: Steel
Finish: Hot-dip galvanized

Part Number	Article Number	NB / DN
PRS2	360481	50 Max
PRS3	360482	80 Max
PRS6	360483	150 Max



PYRAMID RL FIXED ROLLER SUPPORTS

Provides a fixed height roller to support up to DN150 nominal pipe.

- Roller-based support designed specifically for rooftop applications
- Roller capability allows longitudinal movement of pipe, resulting from thermal expansion or contraction

Material: Polyethylene, Polypropylene, Steel
Finish: Hot-dip galvanized
Temperature: -45 to 65 °C
Static Load Safety Factor: 3:1

Part Number	Article Number	NB / DN	Height	Static Load
PRF2	360470	50 Max	147 mm	445 N
PRF3	360471	80 Max	159 mm	1,112 N
PRF6	360472	150 Max	159 mm	2,670 N



PYRAMID RL ADJUSTABLE ROLLER SUPPORTS

Adjustable height allows elevation changes up to 406 mm off the roof for up to DN150 nominal pipe.

- Height-adjustable roller-based support designed specifically for rooftop applications
- Height adjustability allows for effective navigation of pipe around obstructions

Material: Polyethylene, Polypropylene, Steel
Finish: Hot-dip galvanized
Temperature: -45 to 65 °C
Static Load Safety Factor: 3:1

Part Number	Article Number	NB / DN	Height	Static Load
PRA3H12	360473	80 Max	152 – 305 mm	1,112 N
PRA6H16	360474	150 Max	165 – 406 mm	2,670 N

Pyramid H-Frame

Pyramid H-Frame Series Support System is a fast and economical solution for a variety of rooftop applications where support height and width exceed those of the Pyramid ST or Pyramid RL series. It provides an ideal support solution for duct, large diameter pipe or cable tray. Superior load distribution and a low abrasion foam interface combine to ensure that the roof membrane is protected despite varying roof surfaces and shifting caused by expansion and contraction.

- Foam or rubber bottom offers low abrasion interface for better roof membrane protection
- Compatible with roof surfaces including single ply, bituminous, metal and spray foam
- Provides superior load distribution, even with varying rooftop surfaces
- Rubber rooftop interface ideal for solar panel array installations
- Hot-dip galvanized and UV stabilized for long lasting performance
- Accepts standard strut channels

SUPPORT ACCESSORY:



PYRAMID H-FRAME HARDWARE KIT

- Kit includes 6 bolts, 6 strut nuts, and 2 L-brackets to build custom multi-tier H-frame assemblies

Material: Steel
Finish: Hot-dip galvanized

Part Number	Article Number	Screw Diameter
HFRMHDW	360424	M12



PYRAMID H-FRAME POST BASE

- Mounting hardware pre-installed in bases

Material: Polyethylene, Polypropylene, Steel
Finish: Hot-dip galvanized
Temperature: -34 to 54 °C
Static Load Safety Factor: 3:1
Strut Type: A

Part Number	Article Number	Rooftop Interface	Height	Length / Width	Static Load
PHB	360422	Foam	117 mm	314 mm	3,335 N
PHBR	360423	Rubber	118 mm	314 mm	3,335 N



PYRAMID H-FRAME KIT

- Kit includes 2 post bases with pre-installed mounting hardware, 6 bolts, 6 strut nuts, and 2 L-brackets to complete H-frame

Material: Polyethylene, Polypropylene
Temperature: -34 to 54 °C
Static Load Safety Factor: 3:1
Strut Type: A

Part Number	Article Number	Rooftop Interface	Height	Length / Width	Static Load
PHK	360420	Foam	117 mm	314 mm	6,670 N
PHKR	360421	Rubber	118 mm	314 mm	6,670 N

Static load represents 3,335 N per post base. The end user must select and evaluate the strut framing to ensure the assembled H-frame can properly support the applied load.



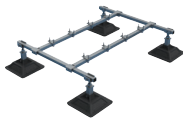
Pyramid Equipment Supports

Pyramid Equipment Support is a fast, flexible and innovative system for supporting heavy-duty mechanical services on rooftop surfaces. Superior load distribution and a low abrasion foam interface combine to ensure that the roof membrane is protected despite varying roof surfaces and shifting caused by expansion and contraction.

- Kit includes post-base assemblies, frame and equipment-support clamps
- Assembles and adjusts to size and height in minutes by one person with one tool
- Innovative crossbar and equipment-support clamps enable quick assembly
- Integral foam pad provides gentle interface for all roof types
- Hot-dip galvanized and UV stabilized for long lasting performance
- Assembled support can be lifted as one unit and easily relocated

“Labor represents over 50% of the costs on our projects. We chose to standardize on Pyramid Equipment Supports for our air handling unit installations, because one person can easily assemble and locate the support unit where required on the roof. This is a very well designed product that saves installation time & keeps me under budget.”

Ulf Engel, Dipl. –Ing. (FH) | ROKO-Klimatechnik



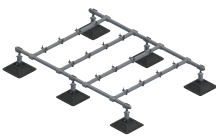
PYRAMID EQUIPMENT SUPPORT KIT, 4 POST BASE

Includes all post bases, hardware and framing needed for an out of the box solution to construct a 1 m equipment support.

Material: Steel, Polypropylene, Polyethylene
Finish: Hot-dip galvanized
Temperature: -34 to 54 °C
Height: 305 – 457 mm
Length: 1,257 mm
Post Base: 314 mm

Part Number	Article Number	Post Base	Width	Surface Area	Ultimate Static Load
PEK4B	360426	4 pc	1,588 mm	0.36 m²	4,980 N

Static load must be stable and uniformly distributed across frame.



PYRAMID EQUIPMENT SUPPORT KIT, 6 POST BASE

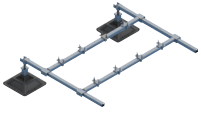
Includes all post bases, hardware and framing needed for an out of the box solution to construct a 2 m equipment support.

Material: Steel; Polypropylene; Polyethylene
Finish: Hot-Dip Galvanized
Temperature: -34 to 54 °C
Height: 305 – 457 mm
Length: 2,172 mm
Post Base: 314 mm

Part Number	Article Number	Post Base	Width	Surface Area	Ultimate Static Load
PEK6B	360427	6 pc	1,588 mm	0.56 m²	9,960 N

Static load must be stable and uniformly distributed across frame.





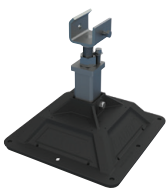
PYRAMID EQUIPMENT SUPPORT FRAME EXTENSION KIT

- Allows creation of custom equipment support lengths by attaching the Pyramid Extension Kit in series to a Pyramid Equipment Support Kit
- Kit includes two post-base assemblies, frame and equipment-support clamps for easy attachment to a Pyramid Equipment Support Kit
- Square tube and cross bars provide superior load and deflection capabilities over standard strut profiles
- Assembles and adjusts to size and height in minutes by one person with one tool
- Innovative crossbar and equipment-support clamps enable quick assembly
- Integral foam pad provides gentle interface for all roof types
- Hot-dip galvanized finish provides superior corrosion protection

Material: Steel, Polypropylene, Polyethylene
 Finish: Hot-dip galvanized
 Temperature: -34 to 54 °C
 Height: 305 – 457 mm
 Length: 1,588 mm
 Post Base: 314 mm

Part Number	Article Number	Post Base	Width	Surface Area	Ultimate Static Load
PEKEF	360493	2 pc	1,257 mm	0.18 m	4,980 N

Static load must be stable and uniformly distributed across frame.
 Pyramid Equipment Support Frame Extension must be used in conjunction with a Pyramid Equipment Support Kit.



PYRAMID EQUIPMENT SUPPORT POST BASE

Individual post base with height adjustable leg 305 to 457 mm gives you the flexibility to create your own equipment support with strut.

- Ideal for use with strut channel type A and U-shaped brackets to create custom equipment supports
- Height adjustable
- Innovative base design evenly distributes load to help prevent damage to roof membrane
- Base is manufactured from UV-stabilized thermoplastic material

Material: Steel, Polypropylene, Polyethylene
 Finish: Hot-dip galvanized
 Temperature: -34 to 54 °C
 Static Load Safety Factor: 3:1

Part Number	Article Number	Height	Length / Width	Surface Area	Static Load
PEB	360425	305 – 457 mm	314 mm	0.09 m ²	3,340 N

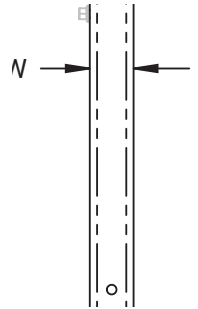


PYRAMID EQUIPMENT SUPPORT HEIGHT EXTENSION

Height extension used to lift the frame up to 914 mm off the roof surface.

- Increases the height between the equipment support frame and roof deck
- Inserts directly into Pyramid Equipment Support Bases

Material: Steel
 Finish: Hot-Dip Galvanized



Part Number	Article Number	H Height	A Post Base Height with Extension	W Width
PEH31	360494	568 mm	762 – 914 mm	60 mm

SUPPORT ACCESSORY:

PYRAMID EQUIPMENT SUPPORT CLAMP



Clamp to secure heavy-duty mechanical equipment when creating a custom frame out of strut.

- Ideal for use with strut channel type A and square tube to create custom equipment supports
- Slotted design offers fast and easy installation

Material: Steel
 Finish: Hot-dip galvanized

Part Number	Article Number	Strut Type
PEC	360428	A



Pyramid EZ Rubber-Based Supports



Feature a wide platform base design to provide reliable support and distribute load across roof surface. These versatile supports are fast and easy to install compared to wood blocks and metal straps.

- Quick height adjustment accommodates for uneven roofs or sloped condensate lines
- No tools or fasteners needed; fast snap-on installation
- Design sheds water and helps reduce pipe corrosion
- Roof-friendly; made of UV-stabilized EPDM material

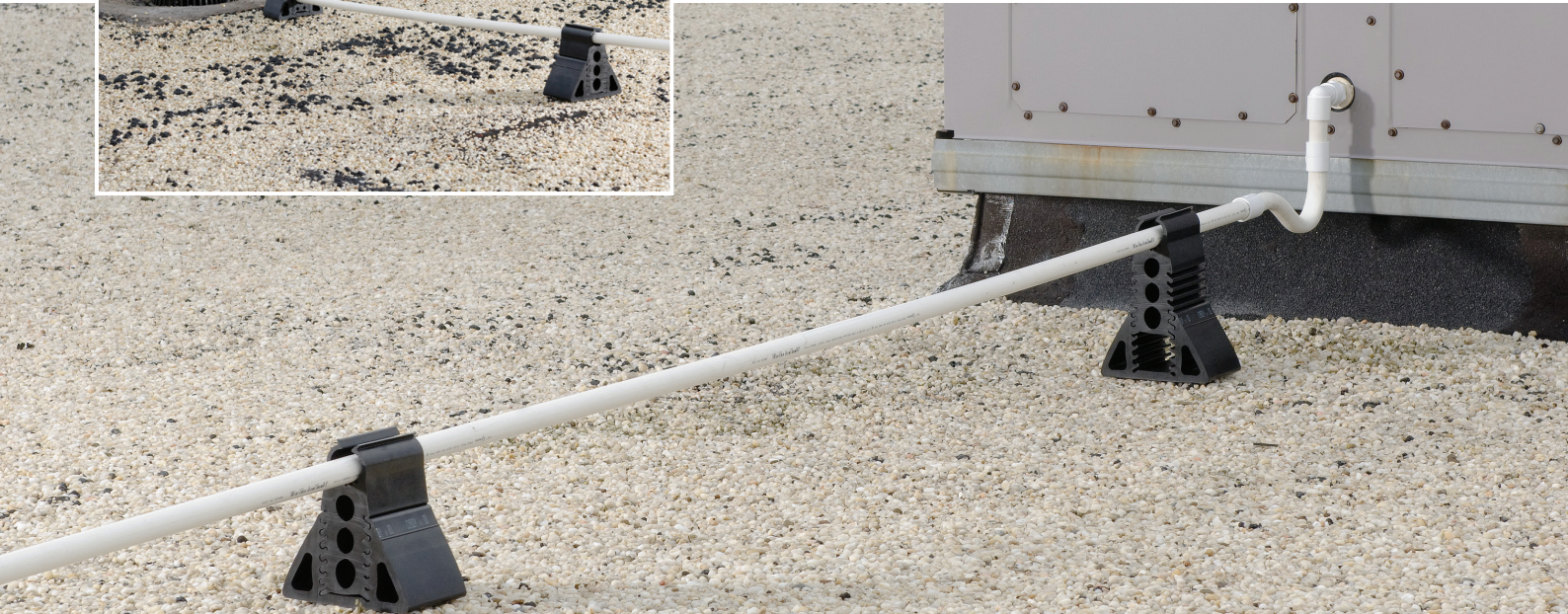
Material: EPDM-SBR rubber

Part Number	Article Number	NB / DN	Height	Ultimate Static Load
RPSE1H24	182365	25	45 – 102 mm	756 N
RPSE1H57	182370	25	127 – 178 mm	756 N
RPSE2H46	182375	50	102 – 152 mm	1,112 N
RPSE4H46	182380	100	100 – 150 mm	3,920 N

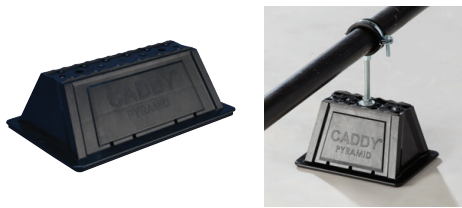
Ultimate load at 6.35 mm deflection. Contact project or roofing engineer for maximum allowable load on individual project roof system.

“As a roofing membrane manufacturer, the products that we choose for our own roof must reflect the same level of quality and durability as our brand. We chose the Pyramid EZ Series Rooftop Support System during our office roof renovation to replace the original wood blocks that held up the gas lines. They were economical, simple to install, and contributed to the general aesthetics of the roof. Just like our installing contractor said, ‘These nVent CADDY Supports are pretty sweet!’”

Jerry Beall, Product and Technical Specialist
FiberTite Roofing Systems, Seaman Corporation



Pyramid Universal Support



- Captive stainless steel nuts allow for custom attachment methods to the support base including easy attachment of stainless steel strut, threaded rod or other project-specific hardware
- Foam bottom offers low abrasion interface for better roof membrane protection
- Compatible with roof surfaces including single ply, bituminous, metal and spray foam
- Provides superior load distribution, even with varying rooftop surfaces
- Multiple sizes and load ratings offer the ability to tailor the solution to the application
- Base is manufactured from UV-stabilized thermoplastic material

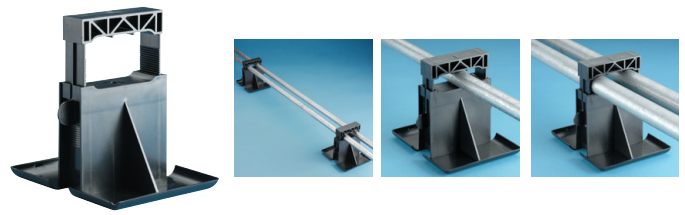
Material: Polyethylene; Polypropylene; Stainless Steel 18-8
 Temperature: -45 to 65 °C
 Static Load Safety Factor: 3:1
 Height: 101.6 mm

Part Number	Article Number	Length	Width	Thread Size	Ultimate Static Load
PBU6	360495	203.0 mm	152 mm	(3) M10	1,334 N
PBU10	360496	317.5 mm	203 mm	(2) M10	4,450 N
PBU16	360497	483.0 mm	203 mm	(2) M10	6,670 N

“The Pyramid family allows us to streamline our project operations while delivering an aesthetically pleasing product for our clients.”

Kyle Laubach, VP of Operations
 Environmental Roofing and Waterproofing

Pyramid 25 Pipe and Conduit Support



- Lightweight plastic construction
- UV resistant, designed and tested for outdoor use
- No tools or fasteners needed for installation
- Rounded edges to help protect the roof membrane

Material: Acrylonitrile Butadiene Styrene

Part Number	Article Number	Height	Static Load
PPRPS25H4	182450	112.7 mm	111 N
PPRPS25H6	182460	163.5 mm	111 N

Pyramid 50 Foam-Based Support



- Replaces slow and labor-intensive installation methods
- Supports pipe, conduit, cable tray and equipment on roofs and below raised floors
- Easily increase load capacity by combining similar Pyramid supports
- Protects the roof membrane while absorbing shock and vibration, without absorbing water
- Metal cover protects against weather and other environmental conditions, such as bird damage

Material: Polyethylene, Polypropylene, Steel
 Static Load Safety Factor: 3:1

Part Number	Article Number	Length	Height	Static Load
FINISH: ELECTRO-GALVANIZED				
RPS50H4EG	182470	264 mm	101 mm	220 N
RPS50H6EG	182480	264 mm	152 mm	220 N
FINISH: HOT-DIP GALVANIZED				
RPS50H4HD	182500	264 mm	101 mm	220 N
RPS50H6HD	182510	264 mm	152 mm	220 N

Pyramid Tool-Free Supports

The Pyramid Tool-Free series offers a unique labor saving solution for supporting electrical and mechanical applications on a variety of roof surfaces. The Pyramid Tool-Free series restrains pipe and conduit without the need for strut clamps or installation tools. Superior load distribution and a low abrasion foam interface combine to ensure that the roof membrane is protected despite varying roof surfaces and shifting caused by expansion and contraction.

SUPPORT ACCESSORY:



PYRAMID TOOL-FREE CLAMP

Two sizes of clamps allow for outside pipe diameters between 0.50" - 2.38" (12.7 - 60.3 mm) to be restrained on top of the Pyramid Tool-Free series base.

- Clamps install without the need for additional tools or strut clamps
- Clamps come in two different sizes to fit project needs
- Plastic clamps and base will not corrode pipe

Material: Nylon
Temperature: -50 to 150 °F

Part Number	Article Number	Pipe Diameter
PTF1C	360484	12,7 – 22,4 mm
PTF2C	360485	21,3 – 60,3 mm



PYRAMID TOOL-FREE SUPPORT KIT

Provides a fixed height support 4" (102 mm) off the roof surface for outside pipe diameters between 0.50" - 2.38" (12.7 - 60.3 mm). Kits come in 5.5", 10" or 16" (140 mm, 254 mm, or 406 mm) lengths.

- Clamps install without the need for additional tools or strut clamps
- Additional clamps can be purchased separately for additional pipe runs
- Plastic clamps and base will not corrode pipe
- Clamps come in two different sizes to fit project needs
- Foam bottom offers low abrasion interface for better roof membrane protection
- Provides superior load distribution, even with varying rooftop surfaces
- Compatible with roof surfaces including single ply, bituminous, metal and spray foam
- Ready to use out of the box, saving installation time and labor
- Multiple sizes and load ratings offer the ability to tailor the solution to the application
- Easy to transport to the roof
- Supports green building requirements; thermoplastic bases are made from recycled material and can contribute to earning LEED credits

Material: Polyethylene; Polypropylene; Nylon
Temperature: -50 to 150 °F
Static Load Safety Factor: 3:1

Part Number	Article Number	Surface Area	Static Load
PTF6	360460	26.452 mm ²	1.334 N
PTF10	360461	59.355 mm ²	4.450 N
PTF16	360462	91.613 mm ²	6.670 N

Part Number	Number of Clamps Included		Maximum Clamp Capacity	
	PTF1C	PTF2C	PTF1C	PTF2C
PTF6	1	–	3	1
PTF10	–	2	5	2
PTF16	–	2	7	3





PYRAMID TOOL-FREE CABLE TRAY SUPPORT KIT

Provides a fixed height support 4" (102 mm) off the roof surface for cable tray. Kits come in 5.5", 10" or 16" (140 mm, 254 mm, or 406 mm) lengths with securing pins included.

- Push-in pins install without the need for additional tools
- Plastic pins and base will not corrode
- Pins and mounting holes accommodate most perforated cable tray
- Ready to use out of the box, saving installation time and labor
- Additional pins can be purchased separately
- Foam bottom offers low abrasion interface for better roof membrane protection
- Provides superior load distribution, even with varying rooftop surfaces
- Compatible with roof surfaces including single ply, bituminous, metal and spray foam
- Multiple sizes and load ratings offer the ability to tailor the solution to the application
- Easy to transport to the roof

Material: Polyethylene; Polypropylene; Nylon
 Temperature: -45 to 65 °C
 Static Load Safety Factor: 3:1

Part Number	Article Number	Surface Area	Static Load
PTF6P	360518	26.452 mm ²	1.330 N
PTF10P	360519	59.355 mm ²	4.450 N
PTF16P	360522	91.613 mm ²	6.670 N

SUPPORT ACCESSORY:



PYRAMID TOOL-FREE CABLE TRAY PIN

Allows for perforated cable tray to be secured on top of Pyramid Tool-Free series bases.

- Push-in pins install without the need for additional tools
- Plastic pins and base will not corrode
- Pins and mounting holes accommodate most perforated cable tra

Material: Nylon
 Temperature: -45 to 65 °C

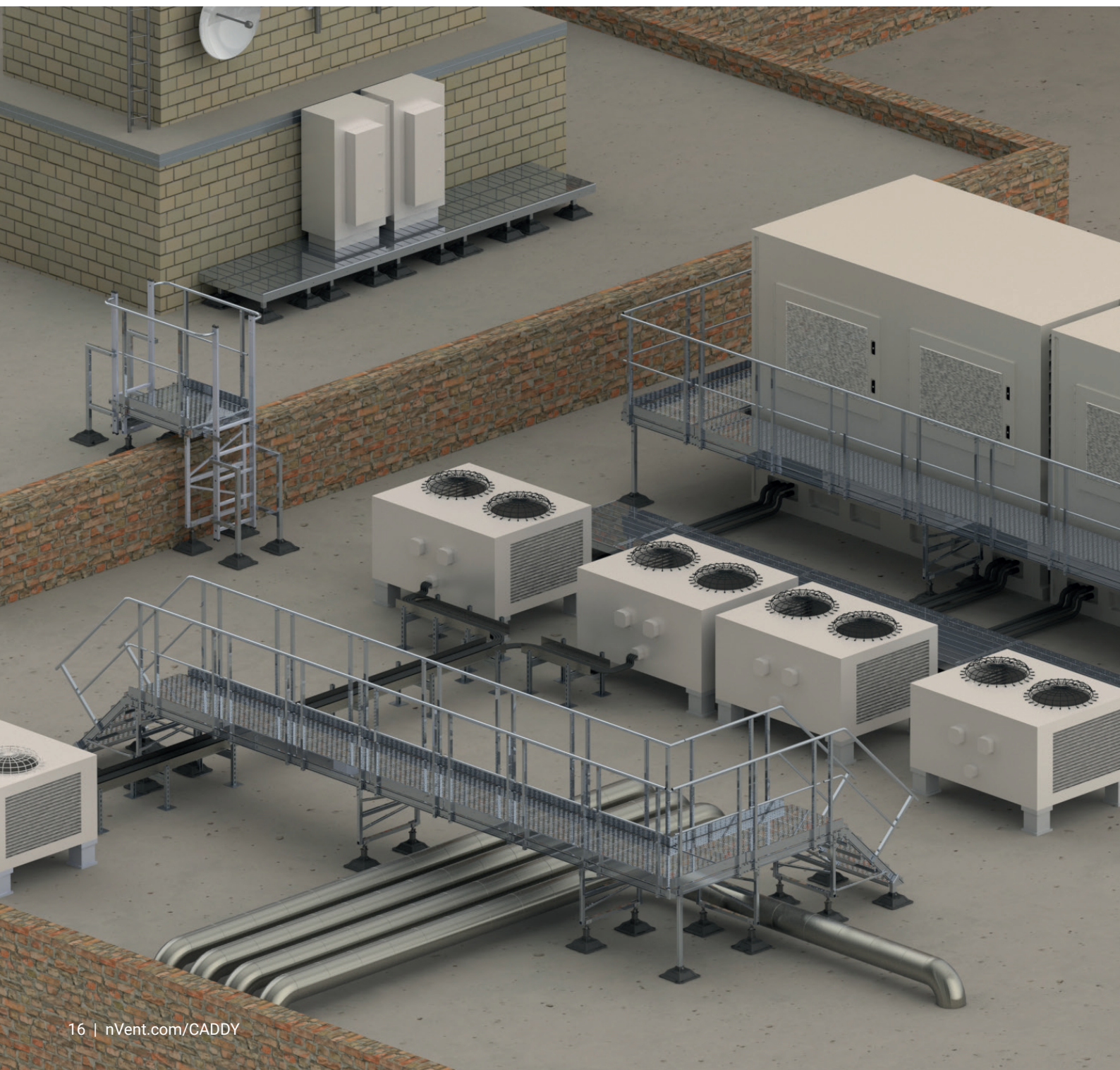
Part Number	Article Number	Diameter	Length
PTFP	360521	20 mm	41.9 mm



Pyramid Step Over and Walkway

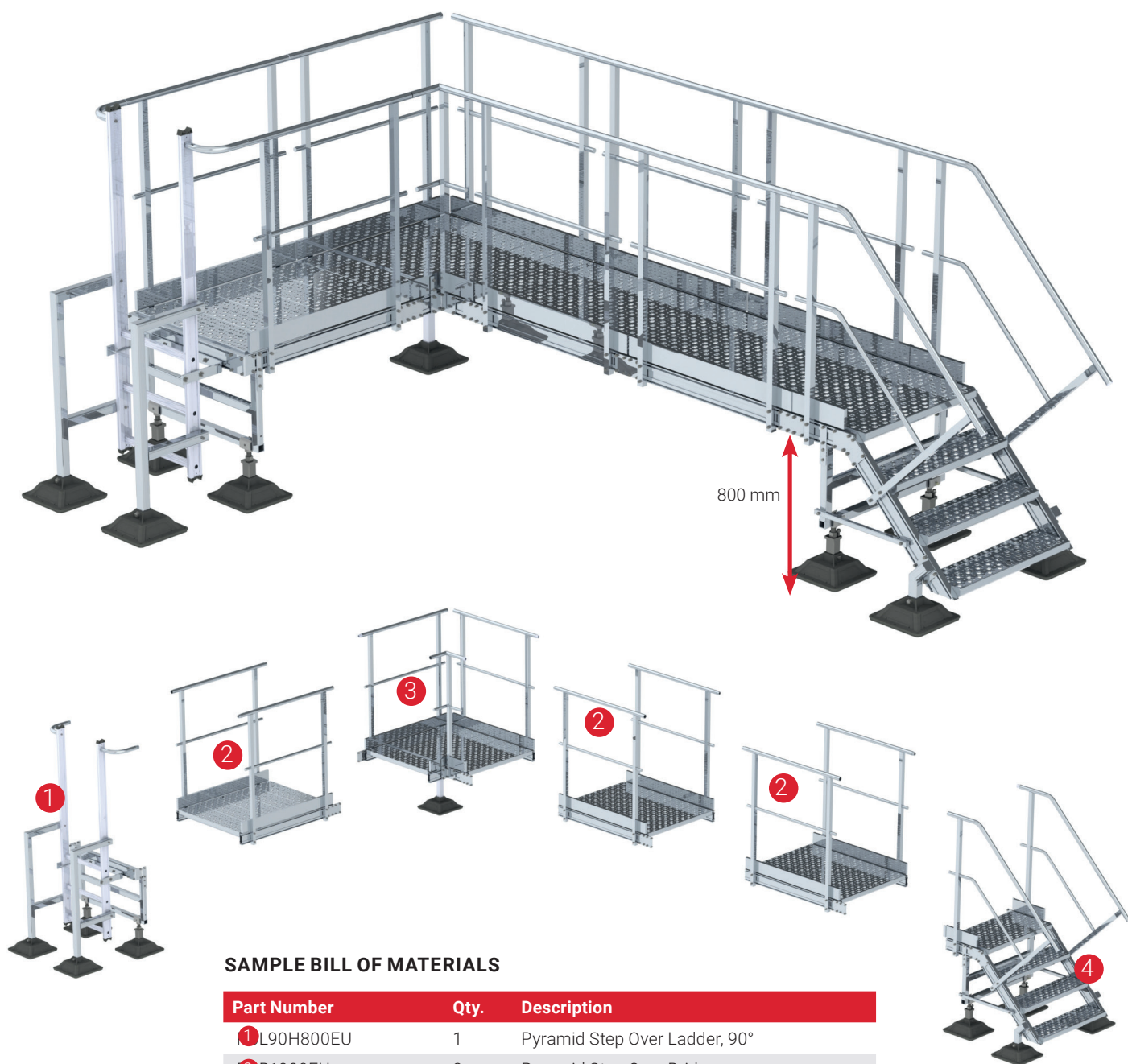
The Pyramid Step Over and Walkway system is designed to provide service engineers and other personnel with safe and comfortable access over rooftop obstacles such as pipe, duct, cable tray, etc

The system is modular, and can be easily assembled to meet various application needs using a selection of ladders, support towers, bridge, and platform units. The supporting units are height-adjustable, making it easy for elevation changes on the roof. Superior load distribution and a low abrasion foam interface combine to ensure that the roof membrane is protected despite varying roof surfaces.



MAIN FEATURES INCLUDE:

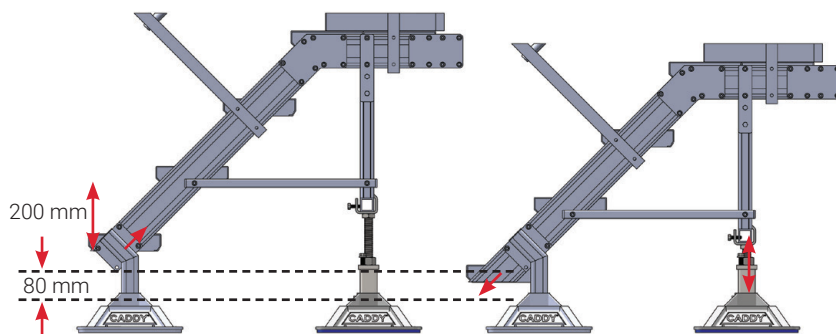
- Aluminum construction designed to withstand harsh environments
- Modular design allows for easily configurable heights and lengths to address varying applications
- Walking surfaces with serrated tread provides maximum slip resistance and drainage
- Stairs, platform and ladders are easily assembled yielding labor-saving, quick installations and level adjustments
- Interchangeable standard components for flexibility while providing safe access over piping, duct, equipment or other utilities on a roof surface
- Meets the harmonized standard NEN-EN-ISO 14122-3



SAMPLE BILL OF MATERIALS

Part Number	Qty.	Description
1 L90H800EU	1	Pyramid Step Over Ladder, 90°
2 B1000EU	3	Pyramid Step Over Bridge
3 BH800EU	1	Pyramid Step Over Bridge Turn Kit
4 L45H800EU	1	Pyramid Step Over Ladder, 45°

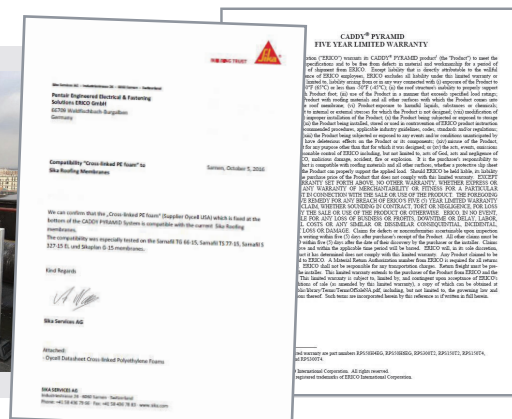
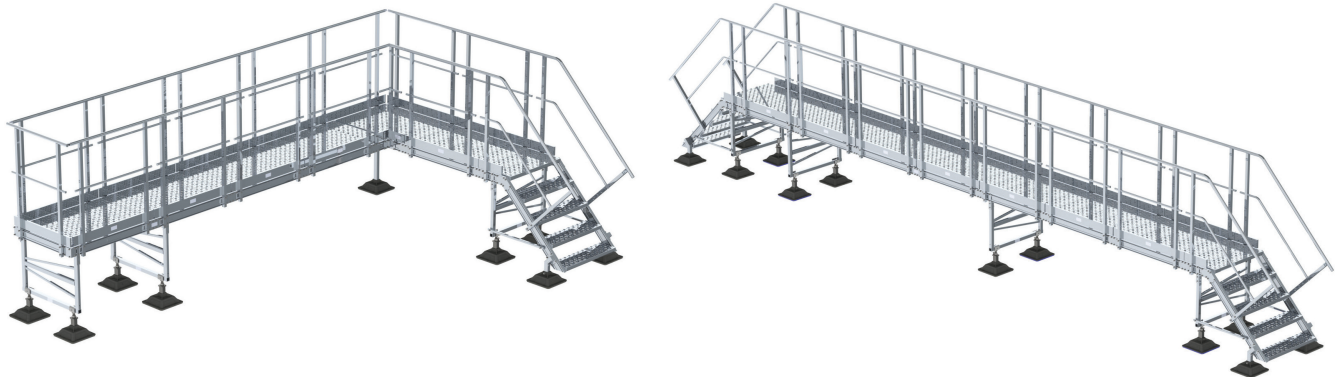
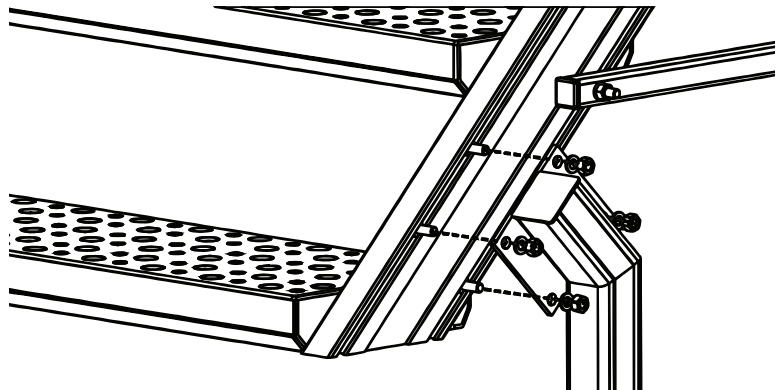
Pyramid Step Over and Walkway



Steps are spaced at 200 mm. Slide the feet along the 45° extrusion tracks and the vertical threaded posts to adjust the overall height for obstacle clearance – as much as 80 mm

* Check local regulations for acceptable height for the first step

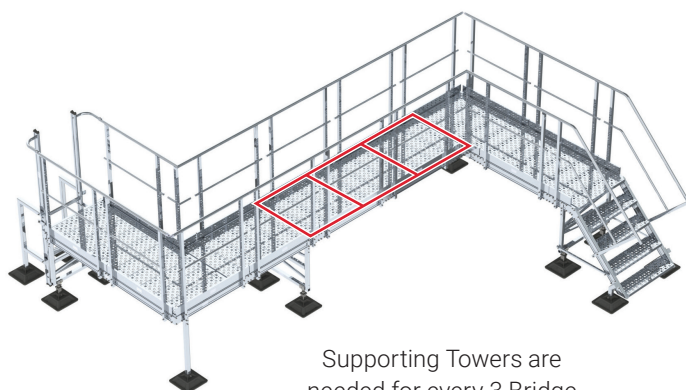
Aluminum construction designed to withstand harsh roof environments and is easy to be put together with included hardware



Pyramid is endorsed by various manufacturers of roofing membranes, including SIKA, and offers 5 year warranty

DESIGN PROCESS FOR STANDARD MODULAR SYSTEM:

1. Determine needed walkway route for a project. Modular system can be utilized for creating any access paths from I-shape, L-shape, Z-shape, or even T-shape
2. Determine needed elevation or clearance based on obstacle height that Step Over is being used to go over. Ladder and Supporting Tower part numbers denote "walkway height" off the roof with walkway itself being 100 mm thick. For example, PCL45H600EU has about 500 mm clearance. 45° ladders provide extra height-adjustability up to 80 mm
3. Determine ladder styles (45 degree or 90 degree) depending on available space around the landing step. Make sure to make space for coming down and getting around the ladders (not right against a wall, for example)
4. Determine number of Walkway units in between ladders and any turn units based on length of the access path
5. Supporting Towers are needed for every 3 Bridge Units not being supported
6. Contact nVent CADDY for custom design projects or wind load evaluation

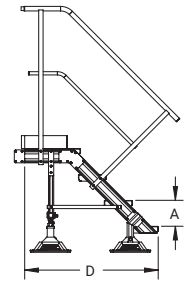
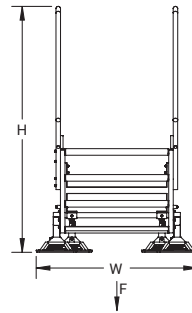


Supporting Towers are needed for every 3 Bridge Units not being supported



Pyramid Step Over Ladder, 45°

- Standard angle ladders provide easy changes in elevation
- Interchangeable components are easily assembled yielding labor-saving and quick installations
- Pyramid bases provide superior load distribution and roof membrane compatibility
- Foam bottom offers low abrasion interface for better roof membrane protection
- Aluminum construction designed to withstand harsh environments
- Walking surfaces with serrated tread provides maximum slip resistance and drainage
- Meets the harmonized standard NEN-EN-ISO 14122-3



Material: Aluminum; Polypropylene; Polyethylene

Part Number	Article Number	Walkway Height (mm)	Number of Steps	H (mm)	W (mm)	D (mm)	A (mm)	F1 (N)	F2 (N)
PCL45H600EU	360601	600 – 680	3	1,700 – 1,780	1,240	830	200	1,500	2,500
PCL45H800EU	360602	800 – 880	4	1,900 – 1,980	1,244	1,030	200	1,500	2,500
PCL45H1000EU	360603	1,000 – 1,080	5	2,100 – 2,180	1,244	1,230	200	1,500	2,500
PCL45H1200EU	360604	1,200 – 1,280	6	2,300 – 2,380	1,244	1,430	200	1,500	2,500
PCL45H1400EU	360605	1,400 – 1,480	7	2,500 – 2,580	1,244	1,630	200	1,500	2,500

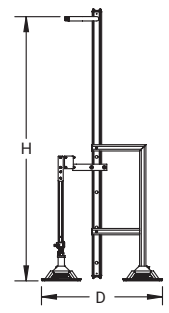
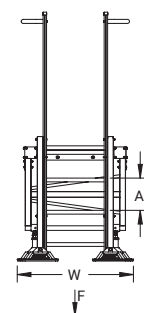
Static Load 1 represents load for a single step.

Static Load 2 represents maximum total load of the ladder.

Clearance of walkway is 100 mm less than the walkway height.

Pyramid Step Over Ladder, 90°

- Vertical ladders ideal for tight spaces
- Interchangeable components are easily assembled yielding labor-saving and quick installations
- Pyramid bases provide superior load distribution and roof membrane compatibility
- Foam bottom offers low abrasion interface for better roof membrane protection
- Aluminum construction designed to withstand harsh environments
- Walking surfaces with serrated tread provides maximum slip resistance and drainage
- Meets the harmonized standard NEN-EN-ISO 14122-3



Material: Aluminum; Polypropylene; Polyethylene

Part Number	Article Number	Walkway Height (mm)	Number of Steps	H (mm)	W (mm)	D (mm)	A (mm)	F1 (N)	F2 (N)
PCL90H600EU	360606	600	2	1,700	1,008	960	280	1,500	2,500
PCL90H800EU	360607	800	3	1,900	1,008	960	280	1,500	2,500
PCL90H1000EU	360608	1,000	4	2,100	1,008	960	280	1,500	2,500
PCL90H1200EU	360609	1,200	4	2,300	1,008	960	280	1,500	2,500
PCL90H1400EU	360611	1,400	5	2,500	1,008	960	280	1,500	2,500

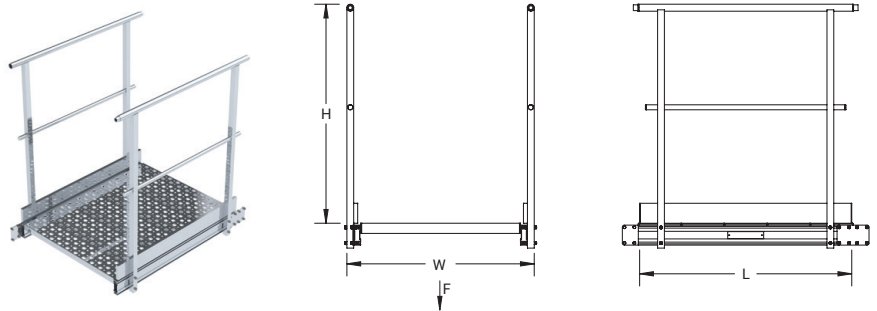
Static Load 1 represents load for a single step.

Static Load 2 represents maximum total load of the ladder.

Clearance of walkway is 100 mm less than the walkway height.

Pyramid Step Over Bridge

- Standard bridge spans that can be combined to create custom pathway lengths
- Interchangeable components are easily assembled yielding labor-saving and quick installations
- Aluminum construction designed to withstand harsh environments
- Walking surfaces with serrated tread provides maximum slip resistance and drainage
- Meets the harmonized standard NEN-EN-ISO 14122-3



Material: Aluminum; Polypropylene; Polyethylene

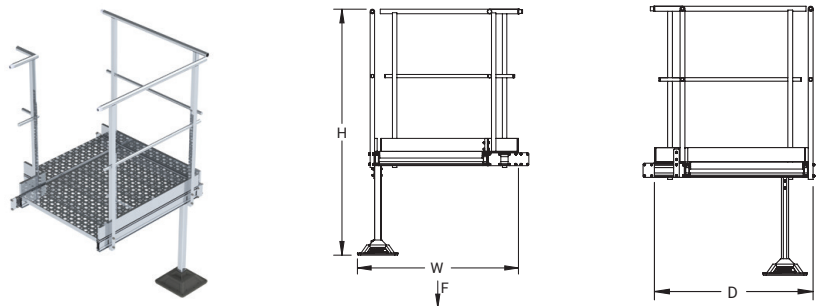
Part Number	Article Number	H (mm)	W (mm)	L (mm)	F (N)
PCB1000EU	360618	1,100	939	1,075	2,500

Bridge spans require support on each end.

An additional support tower is required for every three bridge units connected in a row.

Pyramid Step Over Bridge Turn Kit

- Turn bridges allow for configurations beyond a straight pathway, "L", "U" or "Z" pathways can be created by using turn bridges
- Interchangeable components are easily assembled yielding labor-saving and quick installations
- Pyramid bases provide superior load distribution and roof membrane compatibility
- Foam bottom offers low abrasion interface for better roof membrane protection
- Aluminum construction designed to withstand harsh environments
- Walking surfaces with serrated tread provides maximum slip resistance and drainage
- Meets the harmonized standard NEN-EN-ISO 14122-3



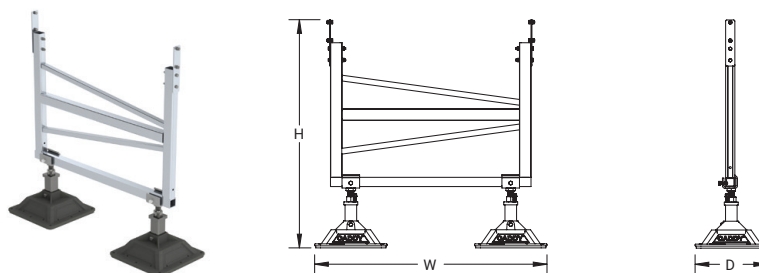
Material: Aluminum; Polypropylene; Polyethylene

Part Number	Article Number	Walkway Height (mm)	H (mm)	W (mm)	D (mm)	F (N)
PCBH600EU	360619	600	1,700	1,085	1,075	2,500
PCBH800EU	360621	800	1,900	1,085	1,075	2,500
PCBH1000EU	360622	1,000	2,100	1,085	1,075	2,500
PCBH1200EU	360623	1,200	2,300	1,085	1,075	2,500
PCBH1400EU	360624	1,400	2,500	1,085	1,075	2,500

Clearance of walkway is 100 mm less than the walkway height.

Pyramid Step Over Support Tower

- Additional support towers ideal for supporting long walkways at varying heights
- Interchangeable components are easily assembled yielding labor-saving and quick installations
- Pyramid bases provide superior load distribution and roof membrane compatibility
- Foam bottom offers low abrasion interface for better roof membrane protection
- Aluminum construction designed to withstand harsh environments
- Walking surfaces with serrated tread provides maximum slip resistance and drainage
- Meets the harmonized standard NEN-EN-ISO 14122-3



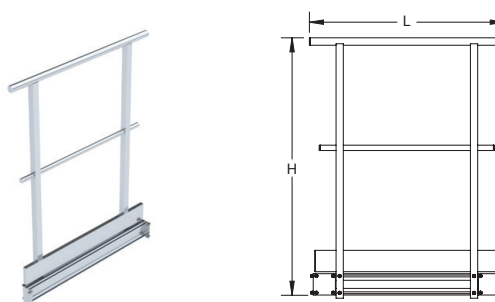
Material: Aluminum; Polypropylene; Polyethylene

Part Number	Article Number	Walkway Height (mm)	H (mm)	W (mm)	D (mm)
PCT600EU	360612	600	590	1,008	314
PCT800EU	360613	800	790	1,008	314
PCT1000EU	360614	1,000	990	1,008	314
PCT1200EU	360615	1,200	1,190	1,008	314
PCT1400EU	360616	1,400	1,390	1,008	314

Walkway height represents the height of the walkway when a Pyramid Step Over Bridge is attached to the support tower.
An additional support tower is required for every three bridge units connected in a row.

Pyramid Step Over End Guardrail

- Use an extra guardrail kit to block off the end of a pathway or create custom pathway configurations while ensuring all safety criteria are met
- Interchangeable standard components for flexibility while providing safe access over piping, duct, equipment or other utilities on a roof surface
- Aluminum construction designed to withstand harsh environments
- Meets the harmonized standard NEN-EN-ISO 14122-3

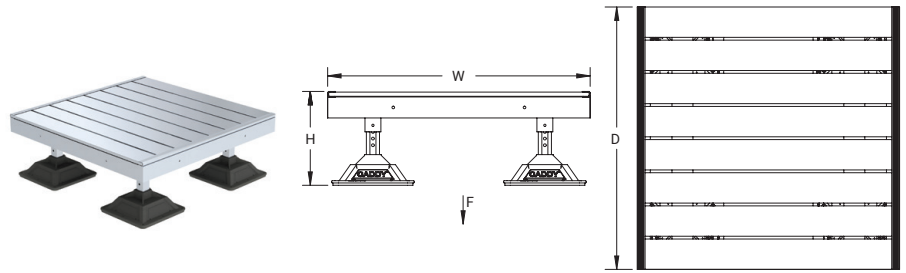


Material: Aluminum

Part Number	Article Number	L mm	H mm
PCL90H600EU	360606	1,500	2,500

Pyramid Step Over Platform

- Height adjustable interlocking platforms allow for quick and easy installation of a custom pathway across rooftop surfaces
- Protect roof surfaces by providing a clearly defined pathway
- Modular design allows for easily configurable heights and lengths to address varying applications
- Pyramid bases provide superior load distribution and roof membrane compatibility
- Foam bottom offers low abrasion interface for better roof membrane protection
- Aluminum construction designed to withstand harsh environments
- Meets the harmonized standard NEN-EN-ISO 14122-3



Material: Aluminum; Polypropylene; Polyethylene

Part Number	Article Number	H (mm)	D (mm)	W (mm)	F (N)
PCP1000EU	360617	279 – 355	1,000	1,000	2,500

Clearance of walkway is 100 mm less than the walkway height.

Product Application Review

	Product Family	ST	ST Bridge	RL	H-frame	Equipment Supports	EZ	PBU	RPS25	RPS50	Tool Free	Step Over Ladder	Step Over Platform
	Page	6-7	7	8	9	10-11	12	13	13	13	14-15	16-22	23
	Image												
	Load rating (N)	1334-6670	8900-13340	445-2670	3335-6670	4980-9960	756-3920	1334-6670	111	220	1334-6670	2500	2500
	Elevation (mm)	122-457	122-142	147-406	Project specific	305-457 (900 max with height extension)	25-150	Project specific	92/143	101/152	101	600-1480	279-355
Electrical	Conduit <= 25 mm	x	x				x		x	x	x		
	Conduit <= 50 mm	x	x				x		x	x	x		
	Conduit <= 100 mm	x	x				x						
	Basket Tray <= 400 mm	x								x	x		
	Basket Tray > 400 mm		x										
	Perforated Tray	x	x					x		x	x		
	Ladder Tray	x	x					x		x			
Mechanical	Pipe <= 25 mm	x	x	x			x	x	x	x	x		
	Pipe <= 50 mm	x	x	x	x		x	x	x	x	x		
	Pipe <= 100 mm	x	x	x	x		x	x					
	Pipe <= 150 mm	x	x	x	x			x					
	Pipe > 150 mm				x								
	Air Duct				x								
	AC unit		x		x	x							
Access	Air Handling Unit					x							
	Clearance 179-255 mm												x
	Clearance 500-1380 mm											x	
	Clearance >1380 mm											Special design	

Our powerful portfolio of brands:

CADDY ERICO HOFFMAN RAYCHEM SCHROFF TRACER



nVent.com/CADDY

WARNING: nVent products shall be installed and used only as indicated in nVent's product instruction sheets and training materials. Instruction sheets are available at nVent.com/ERICO and from your nVent customer service representative. Improper installation, misuse, misapplication or other failure to completely follow nVent's instructions and warnings may cause product malfunction, property damage, serious bodily injury and death and/or void your warranty.

©2018 nVent. All nVent marks and logos are owned or licensed by nVent Services GmbH or its affiliates. All other trademarks are the property of their respective owners. nVent reserves the right to change specifications without notice.

CADDY-SB-FM1243B-FM509LT15WWEN-EN-1805