



Load capacity: 15 kN test load EN 124.

Material: Frame made of aluminium extruded sections. Cover made of 3,0/4,5 mm aluminium chequerplate. Aluminium reinforcement to the underside. Stainless steel screws.

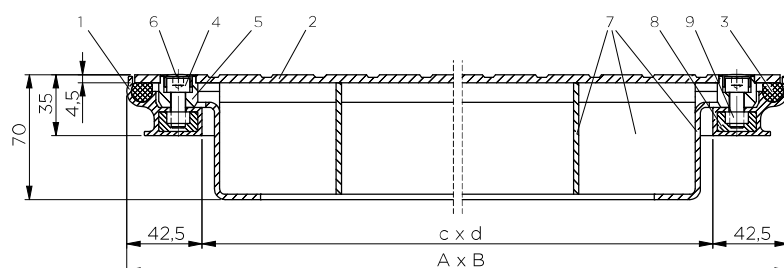
Features: Odor and waterproof design. Good chemical resistant special seal. Absolutely rustproof. Low weight. Opening tool included.

Applications: For pedestrian use inside buildings and their surroundings, particularly where corrosion-resistance and/or low weight are of great advantage.

Installation: Installation must be carried out according to our instructions. With water-tight models, care must be taken to seal the outer frame into the surrounding flooring.

Specification clause: www.hago.at

RVA Alu



- | | | |
|---------------------------------|------------------------------------|--------------------------------|
| 1 Frame | 5 Socket | 9 Square nut (stainless steel) |
| 2 Plate cover | 6 Plastic cap | |
| 3 Seal | 7 Cover reinforcement | |
| 4 Allen screw (stainless steel) | 8 Injection-moulded part (plastic) | |

Type	Clear dimensions of shaft (≈ cm)	Outside dimensions (≈ cm)	Weight approx.	S / O*
	c x d	A x B		
RVA 22	20 x 20	28,5 x 28,5	2 kg	S
RVA 33	30 x 30	38,5 x 38,5	3 kg	S
RVA 44	40 x 40	48,5 x 48,5	4 kg	S
RVA 55	50 x 50	58,5 x 58,5	5 kg	S
RVA 64	60 x 40	68,5 x 48,5	5 kg	S
RVA 66	60 x 60	68,5 x 68,5	8 kg	S
RVA 86	80 x 60	88,5 x 68,5	10 kg	S
RVA 88	80 x 80	88,5 x 88,5	12 kg	S
RVA 106	100 x 60	108,5 x 68,5	12 kg	S
RVA 108	100 x 80	108,5 x 88,5	15 kg	S
RVA 110	100 x 100	108,5 x 108,5	18 kg	S

Installation height ≈ 3,5 cm

Total height including reinforcement of bottom ≈ 7 cm

Special sizes possible

*S = available from stock

*O = to order