



GRP SECTIONAL WATER TANK MANUFACTURED BY SUNG IL CO.,LTD



- GRP Building Materials Company -

SUNG IL CO., LTD.

HEAD OFFICE : 1092-2, THOERAERI, HANLIMMYEON, GIMHAE CITY,
KYUNGNAM, KOREA

TEL : 82-55-346-1490~6

FAX : 82-55-346-1498

E-MAIL : sungil@sungilgrp.co.kr

WEB SITE : www.sungilgrp.co.kr

SEOUL OFFICE : TEL : 82-31-422-5006

FAX : 82-31-422-6005



- Company introduction-

- | | |
|-----------------------|-----------------------------|
| 1. Company overview | 7. Production facilities |
| 2. Company history | 8. Laboratory & certificate |
| 3. Business field | 9. Test equipment |
| 4. Organization chart | 10. Production facilities |
| 5. Main products | 11. References |
| 6. SMC Process | |



[SUNG IL Co.,Ltd.](#)

1. Company overview

- **Name of company** : SUNG IL CO., LTD
- **Establishment** : Feb. 20. 1998
- **Main business** : Manufacture, Construction,
SMC production, Water Tank
Doors, Marble, Toilet Partition
- **Capital** : 1.2 million(USD)
- **Total sales** : 40million(USD)(2012)
- **Overseas sales** : 20million(USD) (2012)
- **Factory scale** : 16,239 m²
- **Person** : 200 (Research institute: 10)
- **Head office** : 1092-2 Gimhae-si Gyungnam,
South Korea
- **Branch office** : Seoul office

2-1 Company History

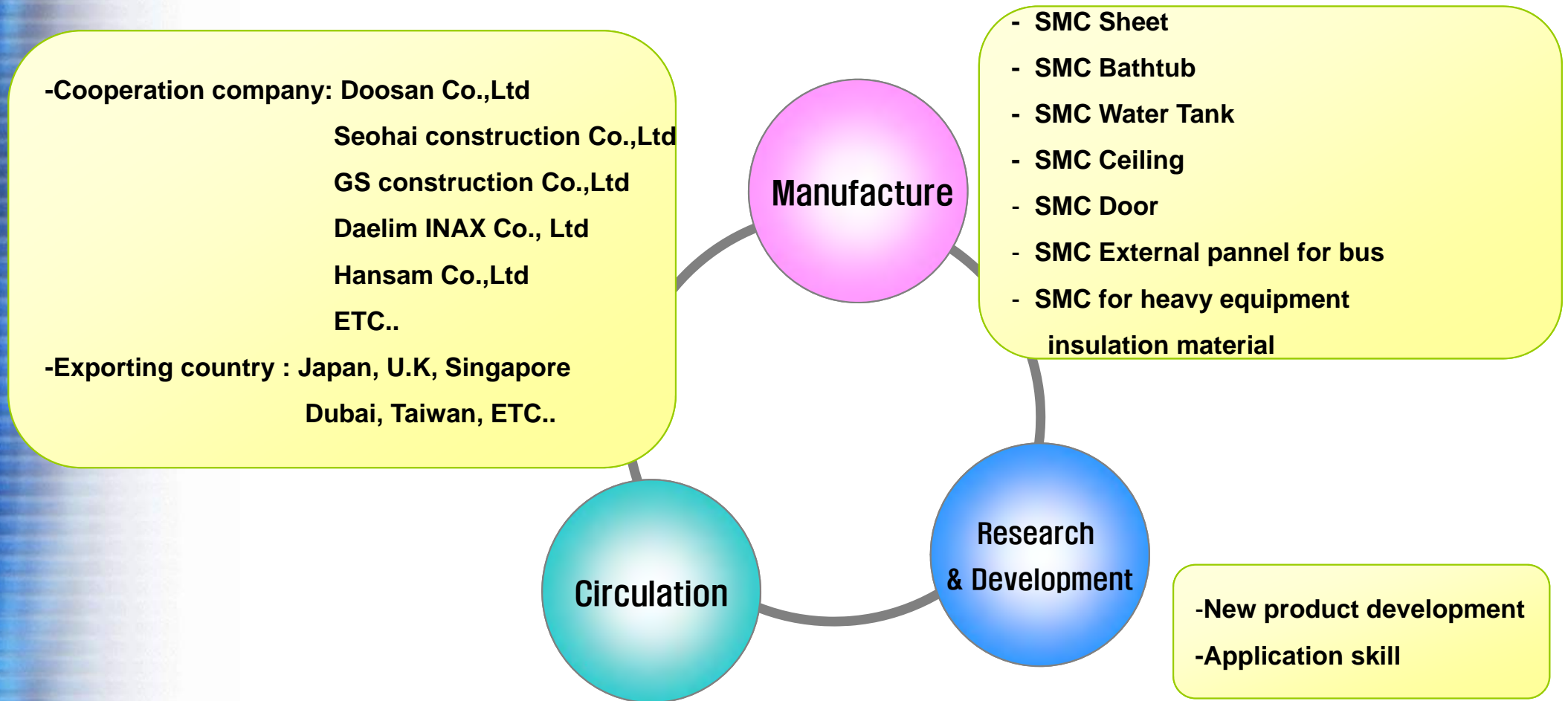
Date	
1998.02	Established SUNG-IL CO.,LTD
1998.04	Acquired windows and doors construction works permission
1999.01	Built factory in Kim-hae
1999.03	Opened Seoul office
1999.03	Acquired SMC doors manufacture patent-SMC doors(0131451)
1999.04	Produced SMC Water Tank
1999.08	Developed insulation & adhesion method for SMC Water Tank
2000.09	Registered a utility model for grain door frame(0206285)
2000.12	Acquired ISO 9002
2001.01	Exported to the U.K, Canada, U.S (SMC doors)
2001.03	Registered a utility model for grain door frame(0224372)

2-2 Company History

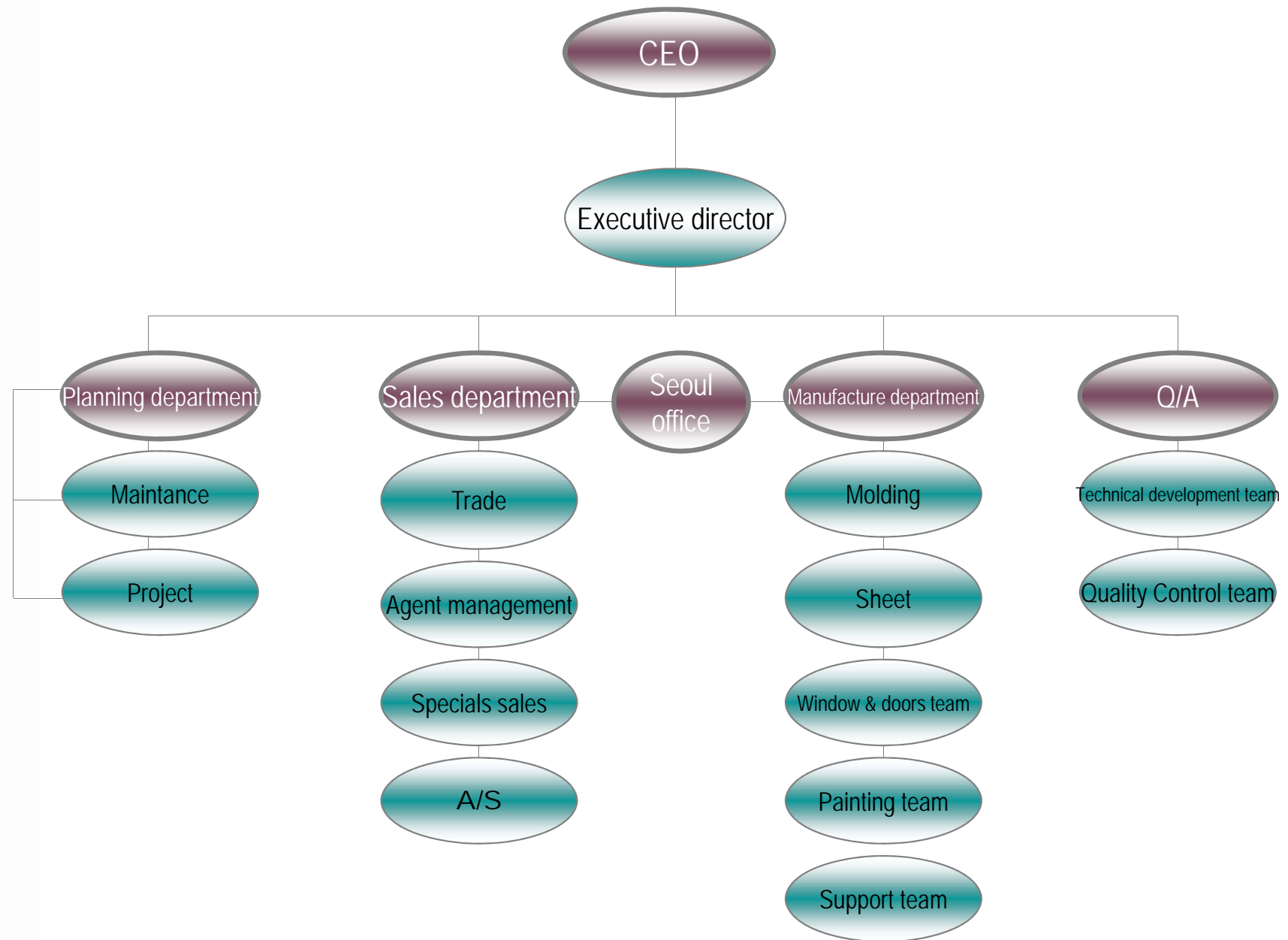
Date	
2001.06	Exported to the New Zealand (SMC doors)
2001.11	Acquired SMC doors manufacture partent(0317510)
2003.04	Acquired wood pattern mould method partent(0383230)
2003.07	Developed SMC ventilation for Apartment
2004.08	Exported to the Japan for SMC UBR parts
2005.01	Acquired flame retardant 3 grade-SMC doors
2005.02	Acquired _ISO14001, ISO9001 Quality System
2006.07	Exported to the Middle East for SMC Water Tank
2007.04	Exported to the vietnam for SMC Sheet
2008.04	Exported to the U.K for SMC doors
2009.12	Acquired WRAS certificate by Water Regulations Advisory Scheme U.K
2012.12	Exported to the Middle East for Marble & Toilet Partition

3. Business field

"SMC sheet, SMC bathtub, SMC water tank, SMC ceiling, SMC doors, SUNG IL CO.,LTD "

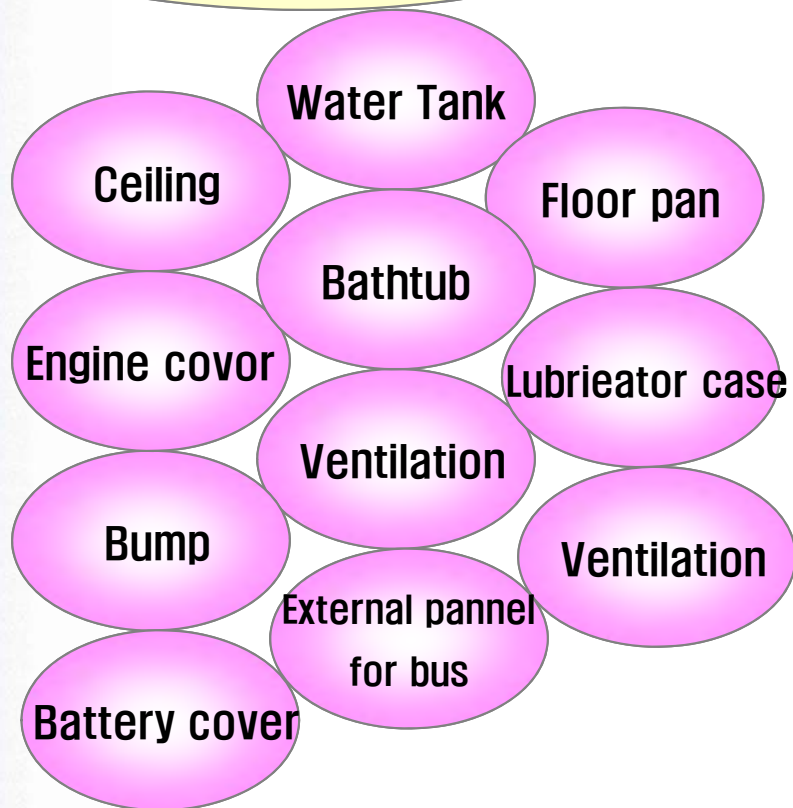


4. Organization Chart

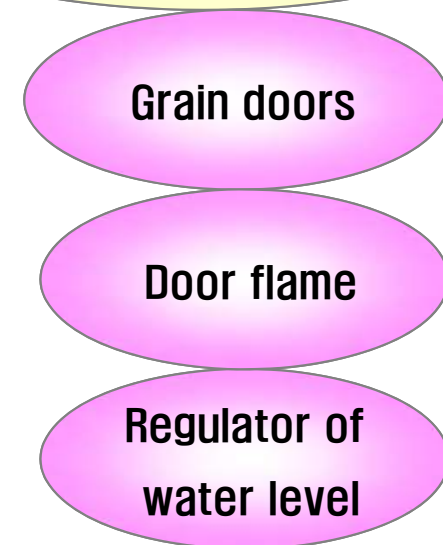


5. Main Products

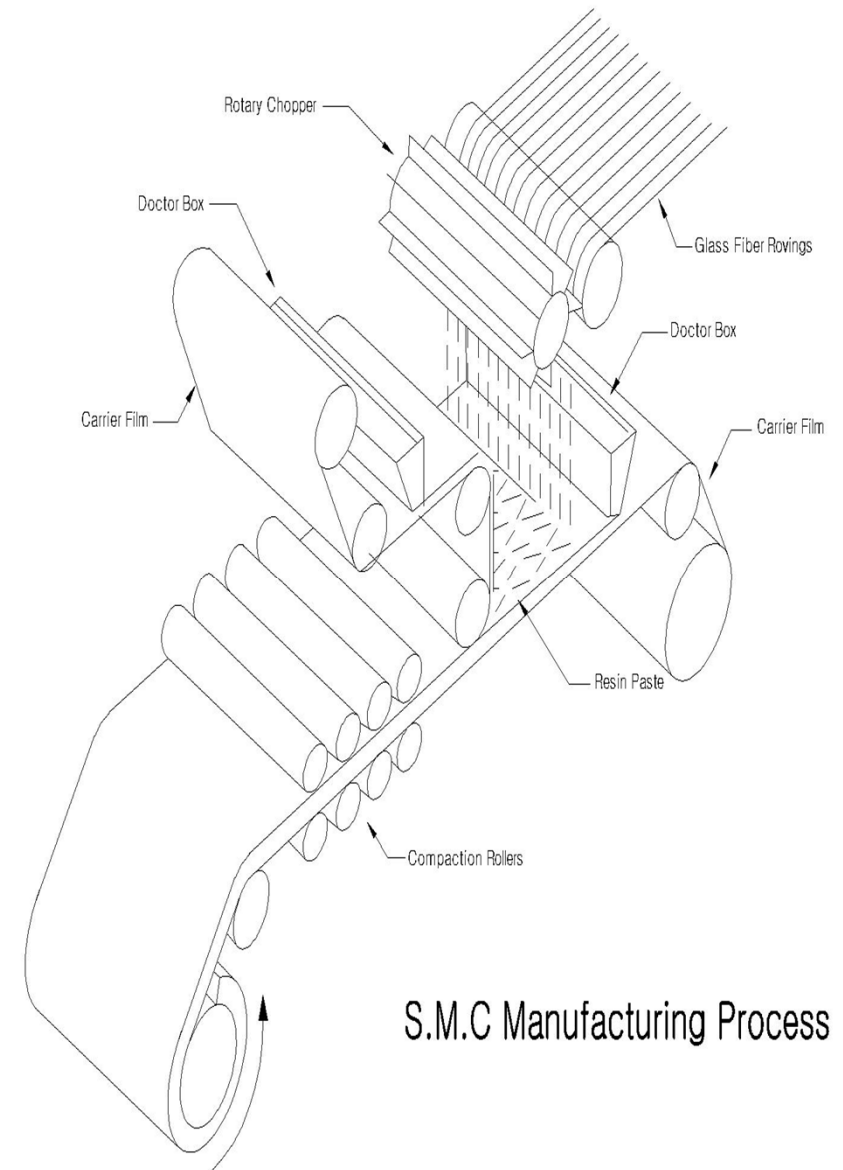
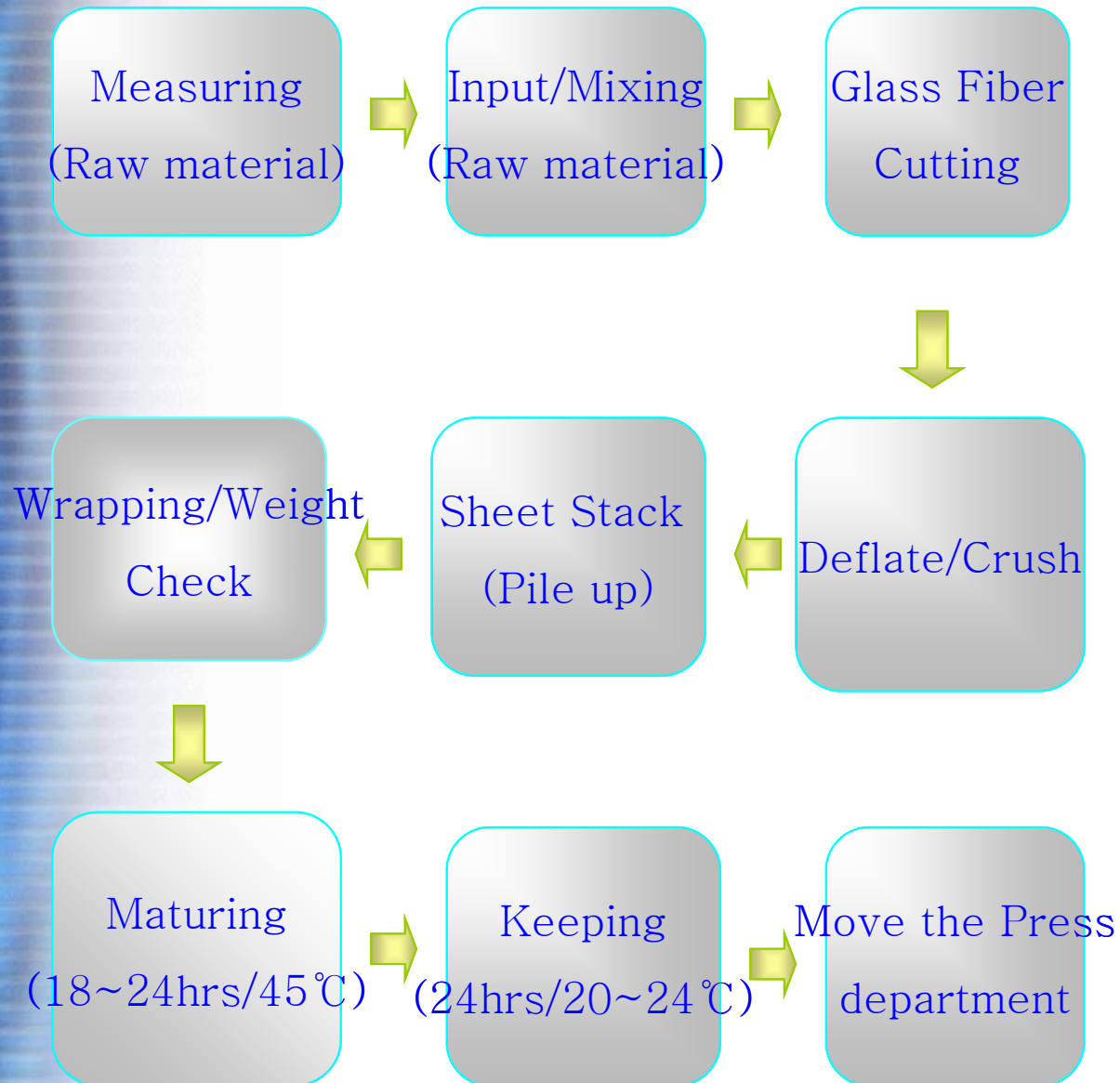
SMC production



Other production



6. SMC Process



7. Production facilities



Hot Presses -
12 Nos

7. Production facilities

3,000 Ton Hot Press- The most biggest one in the World



7. Production facilities



Raw Material
production Facility

7-1. Production facilities



8-1 Laboratory & Certificate

1) Laboratory



8-1 Laboratory & Certificate

2-1) Certificate

UK WRAS Certificate

Our Ref: GH/M100413

18th January 2010



Sung II Co. Ltd
#1092-2 Thoerae-Ri
Hanlim-Myeon
Kimhae-Si
Kyungnam
Korea

Dear Sir

WATER REGULATIONS ADVISORY SCHEME
"ITEMS WHICH HAVE PASSED FULL TESTS OF EFFECT ON WATER QUALITY - BS 6920"

We refer to your application for the material(s) described below to be approved arising from the results of the tests of effect on water quality that have been carried out on the product(s) so described, it has been decided that there is no objection to its/their use provided the source, nature and manufacturing processes of the ingredients and products are not changed. (See notes overleaf).

GLASS REINFORCED PLASTIC (GRP) – COMPONENTS

5120

SMC water tank panel. Grey coloured, press moulded GRP panel. For hot and cold water use up to 85°C.

Test Report: MA3995/K

0912509

SUNG II CO LTD

An entry, as above, will accordingly be included in the Water Fittings Directory on-line, Part Two, under the section headed, "Materials which have passed full tests of effect on water quality".

Your attention is drawn to the statement overleaf. Manufacturers or applicants may only quote in their sales literature terms which are used in this letter, namely that the product as listed, having passed the tests of effect on water quality, is suitable for use in contact with potable water and that a reference to the product will be included in the Materials section, Part Two, of the Water Fittings Directory on-line: this may be abbreviated to "Water Regulations Advisory Scheme - Approved Material" or "WRAS - Approved Material". **Approval of this product does not signify the approval of its mechanical or physical properties for any use.**

The Technical Committee of the Scheme reserves the right to review approval. This product automatically becomes due for audit reassessment in December 2014.

Yours faithfully

Gareth Harris
WRAS Approvals Administrator
Water Regulations Advisory Scheme

Water Regulations Advisory Scheme Ltd.
30 Fern Close, Pencoed-Fin Industrial Estate,
Oakdale, Gwent, NP11 3EH, UK.
Tel: 01495 246454. Fax: 01495 236299.
E-mail: info@wras.co.uk Website: www.wras.co.uk

The Water Regulations Advisory Scheme
Registered in England No. 6642910
Registered Office: 1 Queen's Lane,
London W1M 0SE

8-1 Laboratory & Certificate

2-1) Certificate

Singapore PSB Certificate

Test

ZERTIFIKAT ♦ CERTIFICATE ♦ 認証証書 ♦ CERTIFICADO ♦ CERTIFICAT



TEST CERTIFICATE

This Certificate is issued to

Hydro Dynamic Engineering Pte Ltd
Blk 209, New Upper Changi Road
#04-631
Singapore 460209

FOR

Product: "GRP" Water Tank

Brand/Model: SUNGIL

Detail: -

Specification: SS 245 : 1995,
SS 375 : 2001
AS/NZS 4020 : 2005 (Appendix H)

Test Report: 54S071737corr1/1/KSY,57S072105-01-SLE,57S074614-01-SLE,
57S074614-02-SLE,54S071696/OKB,57S076171-EO,OM004168(NMC) &
S08MEC05438/OKB

Summary

A sample of product submitted was tested and found to comply with the Test requirements of the above standard(s).

Vice President (MEC)
TUV SUD PSB Pte Ltd

Certificate No:	Date of Original Issue:	Date of Last Revision:	Date of Expiry:
02156	01 Oct 2008	09 Sep 2010	30 Sep 2012

This Certificate is part of a full report and should be read in conjunction with it. This Certificate remains the property of TUV SUD PSB Pte Ltd and shall be returned upon request. The use of this Certificate is subjected to the terms and conditions of the Test Certification Scheme.
Note: This Certificate is not a Certificate of Conformity.

8-1 Laboratory & Certificate

2-1) Certificate

– USA Water Quality Member –



Certificate of Membership

SUNG IL CO., LTD.

HAVING CLEARLY EVIDENCED SINCERE INTEREST
IN THE PROGRESS AND THE DEVELOPMENT OF WATER
QUALITY FOR ALL MANKIND YOU ARE HEREBY
ELECTED TO MEMBERSHIP WITH FULL PRIVILEGES IN

WATER QUALITY ASSOCIATION

PETER J. CENSKY
EXECUTIVE DIRECTOR

8-1 Laboratory & Certificate

2-1) Certificate

ISO 9001 / 14001



MSA Certification Co., Ltd.
Environmental Management System Certificate

SUNGIL Co., Ltd.

#1092-2 Toerae-ri, Hanlim-myeon, Gimhae-si, Gyeongsangnam-do, Korea

MSA Certification Co., Ltd. Hereby certifies that the Environmental Management System of the above organization has been evaluated and found to be in line with the requirements of the following standard:

ISO 14001:2004

For the scope of

Manufacture of SMC(Sheet Molding Compound) and SMC Molding Product(Door, Door Panel, Water Tank, Exhaust Port, Bathroom Floor Pan, Bath Tub, Ceiling Panel, Knock-Down Panel, Toilet Partiton), Resin Composite Window, Shoe Rack

Certificate Number : KorE-081142

Certificate Valid Until : 18 January 2011 ~ 17 January 2014

Initial Certification Date : 18 January 2008

MSA Certification Date : 18 January 2011

Certification Expiry Date : 17 January 2014

Scheme Manager



10F, Jeongwoo Bldg, Yousido-dong, Eunhaeng-ro 29, Yeongdeungpo-gu, Seoul 150-739, Korea
This certificate is a sole property of MSA Certification Co., Ltd. and therefore shall be returned to it upon its request. (Rev.3)



MSA Certification Co., Ltd.
Quality Management System Certificate

SUNGIL Co., Ltd.

#1092-2 Toerae-ri, Hanlim-myeon, Gimhae-si, Gyeongsangnam-do, Korea

MSA Certification Co., Ltd. Hereby certifies that the Quality Management System of the above organization has been evaluated and found to be in line with the requirements of the following standard:

ISO 9001:2008

(Excluding Clause: 7.3 Design & Development)

For the scope of

Manufacture and Service of SMC(Sheet Molding Compound) and SMC Molding Product(Door, Door Panel, Water Tank, Exhaust Port, Bathroom Floor Pan, Bath Tub, Ceiling Panel, Knock-Down Panel, Toilet Partiton), Resin Composite Window, Shoe Rack

Certificate Number : KorQ-082251

Certificate Valid Until : 18 January 2011 ~ 17 January 2014

Initial Certification Date : 18 January 2008

MSA Certification Date : 18 January 2011

Certification Expiry Date : 17 January 2014

Scheme Manager



10F, Jeongwoo Bldg, Yousido-dong, Eunhaeng-ro 29, Yeongdeungpo-gu, Seoul 150-739, Korea
This certificate is a sole property of MSA Certification Co., Ltd. and therefore shall be returned to it upon its request. (Rev.3)

8-1 Laboratory & Certificate

2-1) Certificate

Insurance Endorsement



PL Insurance Endorsement

Endorsement	001
Policy No.	P151100444
Insured	Sungil Co., Ltd
Policy Period	From March 09, 2011 To March 09, 2012

1. It is understood and agreed that the 'Policy Territory & Jurisdiction' under this endorsement shall be amended as follow.
2. This endorsement policy is available from April 02, 2011 and attached to PL Insurance Policy No. P151100444.

■ Policy Territory & Jurisdiction changed

	Before alter	After alter
Policy Territory & Jurisdiction	Asia excluding Korea	Asia excluding Korea Russia
Annual Turnover	KR ₩3,852,000,000.	KR ₩4,352,000,000.

■ Additional Premium : US \$317.-

All other terms and conditions remain unchanged.

Issued On : April 01, 2011

KOREA FEDERATION OF SMALL & MEDIUM BUSINESS

Kim Ki Mun

Authorized Signature

9. Production stack & Shipping

1) Stack



2) Shipping



10. Test equipment

Order	Item	Spec	Deviation	Amount	Remark
1	Complex tester			1	
2	Heat-resistant teater	400*450*500		1	
3	Compression tester	1,000 N	—	1	
4	Hardness tester	0~100	—	1	GYZY934-1
5	Digital illuminometer	40,000fc	±3%rdg±dgt	1	TES-1335
6	Color meter	NR-3000		1	NIPPON DENSHOKU
7	Dryer	440*310*630		2	
8	Micrometer	50mm	0.5mm	2	
9	Venier calipers	150mm	0.5mm	2	
10	Multifunction scquar	600mm	0.05mm	1	
11	Hopper scale	1,000 kg	0.5 kg	3	
12	Hopper scale	150 kg	0.01 kg	2	
13	Dial gauge	20mm	0.01mm	4	
14	Dial gauge	10mm	0.01mm	6	
15	Push Gauge	20 kg		1	
16	Door modification & impact tester	910*2010*2000		1	
17	Apron modification & load tester	1220*1800*2140		1	

11-1 Production facilities item

Mould department

Order	Item	Set	Q/T	Order	Item	Set	Q/T
01	Hydraulic press 3000Ton	EA	1	09	S.M.C Water tank	Set	7
02	Hydraulic press 2500Ton	EA	1	10	S.M.C Product	Set	13
03	Hydraulic press 1500Ton	EA	3	11	S.M.C Product	Set	3
04	Hydraulic press 1000Ton	EA	5	12	S.M.C Product	EA	10
05	Hoisted crane(30Ton)	EA	2	13	S.M.C sheet rewinder	Set	10
06	Compressor	EA	6	14	Air pressor	EA	8
07	Oil purificator	EA	1	15	Dust collector	EA	1
08	Water tank mould	Set	11	16		EA	

Sheet department

Order	Item	Set	Q/T	Order	Item	Set	Q/T
01	SMC Machine	Set	1	07	SM tank	EA	1
02	Rolling Machine	EA	1	08	Mixing tank	EA	3
03	Roving Room	Set	1	09	Stir machin(15,30,50HP)	EA	3
04	Maturing Room	Set	1	10	Mono pump	EA	3
05	Resin tank	EA	3	11	Dust collector	EA	2
06	Filler tank	EA	2	12	Compressor	EA	2

11-2 Production facilities

Window & door department

No	Item	Unit	Amount	No.	Item	Unit	Amount
01	P/U Foaming machin	Set	1	09	Boring M/C	EA	2
02	P/U Hot press	Set	1	10	Sprador	EA	2
03	Moulder	Set	1	11	Compressor	EA	3
04	Double tenoner	Set	2	12	Lifter	EA	4
05	Double end tenoner	Set	2	13	Hollow chisel mortise	EA	3
06	Cold press	Set	5	14	Mould for door frame	SET	44
07	CNC	Set	1	15	Incineration plant	EA	1
08	Furnishing machine	Set	2	16	Dust collector	EA	2

Paining department

No.	Item	Unit	Amount	No.	Item	Unit	Amount
01	Auto painting M/C	SET	1	07			
02	Water booth	Set	1	08			
03	Airless	Set	2	09			
04	Air dryer	Set	1	10			
05	Compressor	Set	1	11			
06				12			

11-5 References

The Major Project List For GRP Water Tank in Middle East

Country	Construction Site	Dimension of Tank	Q'ty (Unit)	Total	Remarks
Kuwait	Int'l Clinic Project	3.0 x 7.0 x 3.0 = 63m³	1	63m³	
		4.0 x 6.0 x 3.0 = 72m³	1	72m³	
	Shuiba Camp II Project	7.0 x 17 x 4.0 = 476m³	1	476m³	
		9.0 x 19 x 4.0 = 684m³	1	684m³	
		7.0 x 12 x 4.0 = 336m³	1	336m³	
		9.0 x 14 x 4.0 = 504m³	1	504m³	
		5.0 x 6.0 x 3.0 = 90m³	2	180m³	
		7.0 x 7.0 x 3.0 = 147m³	4	588m³	
		2.5 x 5.0 x 2.0 = 25m³	5	125m³	
	Shuiba Camp 1 Project	2.0 x 4.0 x 1.0 = 8m³	12	96m³	
		2.5 x 4.0 x 1.0 = 10m³	6	60m³	
		2.0 x 4.0 x 1.5 = 12m³	6	72m³	
		3.0 x 5.0 x 1.5 = 23m³	2	45m³	
		2.0 x 4.0 x 2.0 = 16m³	30	480m³	
		3.0 x 5.0 x 2.0 = 30m³	4	120m³	
		3.0 x 5.0 x 2.5 = 38m³	4	150m³	
		4.0 x 6.0 x 3.0 = 72m³	6	432m³	
		5.0 x 11 x 3.0 = 158m³	3	473m³	
		6.0 x 12 x 3.0 = 216m³	6	1296m³	
		7.0 x 10 x 4.0 = 280m³	1	280m³	
		8.0 x 10 x 5.0 = 400m³	1	400m³	
	Shoebaa Camp	15.0 x 18 x 4.0 = 1080m³	1	1080m³	
		11.0 x 10 x 4.0 = 440m³	2	880m³	
		4.0 x 7 x 3.0 = 84m³	2	168m³	
		5.0 x 6 x 3.0 = 90m³	1	90m³	
	SALMYIA HOTEL	4.0 x 10 x 3.0 = 120m³	1	120m³	
		3.0 x 20 x 4.0 = 240m³	1	240m³	
	AQYILA PUMP STATION	7.0 x 7.0 x 3.0 = 147m³	1	147m³	
		2.5 x 5.0 x 2.0 = 25m³	1	25m³	

Country	Construction Site	Dimension of Tank	Q'ty (Unit)	Total	Remarks
Kuwait	Workers Domitory2	2.0 x 2.0 x 1.0 = 4m³	20	80m³	
		2.0 x 3.0 x 1.0 = 6m³	5	30m³	
		2.0 x 4.0 x 1.0 = 8m³	5	40m³	
		3.0 x 4.0 x 1.0 = 12m³	5	60m³	
		1.5 x 4.0 x 1.0 = 6m³	5	30m³	
		2.0 x 3.0 x 1.5 = 9m³	5	45m³	
		2.0 x 2.0 x 2.0 = 8m³	5	40m³	
		2.0 x 4.0 x 2.0 = 16m³	10	160m³	
		2.5 x 5.0 x 2.0 = 25m³	5	125m³	
		4.0 x 5.0 x 2.0 = 40m³	5	200m³	
Lybia	THE GREAT MAN-MADE RIVER PROJECT	15 x 16 x 3.0 = 720m³	1	720m³	
		2.5 x 4.0 x 2.0 = 20m³	1	20m³	
		7.0 x 17 x 4.0 = 476m³	1	476m³	
UAE	Radiant Tech Works	9.0 x 9.0 x 4.0 = 324m³	1	324m³	
		2.0 x 12.0 x 2.0 = 48m³	1	48m³	
	AL JABER ACCOMMODATION, ABU DHABI	7.0 x 10 x 2.0 = 140m³	52	7280m³	
		20.0 x 66.0 x 4.0 = 5280m³	1	5280m³	
		6.0 x 8.0 x 3.0 = 144m³	78	11232m³	
		5.0 x 6.0 x 2.0 = 60m³	14	840m³	
		5.0 x 7.0 x 2.0 = 70m³	26	1820m³	
	Al Sahel Tech, Abu Dhabi.	4.0 x 6.0 x 3.0 = 72m³	26	1872m³	
		6.0 x 13 x 3.0 = 234m³	1	234m³	
		9.0 x 12 x 3.0 = 324m³	1	324m³	
		7.0 x 12 x 3.0 = 252m³	1	252m³	
		9.0 x 14 x 3.0 = 378m³	1	378m³	
		5.0 x 6.0 x 3.0 = 90m³	2	180m³	
		7.0 x 7.0 x 3.0 = 147m³	4	588m³	
		2.5 x 5.0 x 3.0 = 38m³	5	188m³	

Country	Construction Site	Dimension of Tank	Q'ty (Unit)	Total	Remarks
UAE	AL JABER ACCOMMODATION, ABU DHABI	6.0 x 13 x 3.0 = 234m³	1	234m³	
		9.0 x 12 x 3.0 = 324m³	1	324m³	
		7.0 x 12 x 3.0 = 252m³	1	252m³	
		9.0 x 14 x 3.0 = 378m³	1	378m³	
		5.0 x 6.0 x 3.0 = 90m³	2	180m³	
		7.0 x 7.0 x 3.0 = 147m³	4	588m³	
		2.5 x 5.0 x 3.0 = 38m³	5	188m³	
	Private market	2.0 x 4.0 x 1.0 = 8m³	7	56m³	
		2.5 x 4.0 x 1.0 = 10m³	20	200m³	
		2.0 x 4.0 x 1.5 = 12m³	20	240m³	
		3.0 x 5.0 x 1.5 = 23m³	25	563m³	
		2.0 x 4.0 x 2.0 = 16m³	30	480m³	
		3.0 x 5.0 x 2.0 = 30m³	4	120m³	
		3.0 x 6.0 x 2.5 = 45m³	4	180m³	
		4.0 x 6.0 x 2.0 = 48m³	5	240m³	
		5.0 x 11 x 2.0 = 105m³	5	525m³	
		6.0 x 12 x 3.0 = 216m³	3	648m³	
		7.0 x 10 x 2.0 = 140m³	10	1400m³	
		8.0 x 10 x 2.0 = 160m³	3	480m³	
	Sarhj Project	4.0 x 10 x 3.0 = 120m³	1	120m³	
		3.0 x 20 x 4.0 = 240m³	1	240m³	
		7.0 x 7.0 x 3.0 = 147m³	1	147m³	
		2.5 x 5.0 x 2.0 = 25m³	1	25m³	
Bahrain	Theme Island, Amwaj Islands	17 x 25 x 3.0 = 1275m³	2	2550m³	
		2.5 x 5.0 x 2.0 = 25m³	1	25m³	
	ISA SPORTS CITY-PHASE 1	9 x 13.5 x 3.5 = 425m³	2	851m³	
		5 x 15.0 x 3.5 = 263m³	2	525m³	
		3 x 4.0 x 2.0 = 24m³	4	96m³	
		7.0 x 17 x 1.5 = 179m³	1	179m³	
		2.0 x 5.0 x 2.0 = 20m³	14	280m³	
		4.0 x 5.0 x 2.0 = 40m³	7	280m³	

Country	Construction Site	Dimension of Tank	Q'ty (Unit)	Total	Remarks
SAUDI ARABIA	Hospital Project	6.0 x 5.0 x 2.0 = 60m³	10	600m³	
		9.0 x 19 x 1.5 = 257m³	1	257m³	
		7.0 x 12 x 1.5 = 126m³	1	126m³	
		9.0 x 14 x 1.5 = 189m³	1	189m³	
		5.0 x 6.0 x 2.0 = 60m³	2	120m³	
		5.0 x 6.0 x 3.0 = 90m³	4	360m³	
		7.0 x 7.0 x 3.0 = 147m³	2	294m³	
		4.0 x 7.0 x 2.0 = 56m³	4	224m³	
		2.5 x 5.0 x 1.5 = 19m³	5	94m³	
IRAN	7 Ridout Rd	4.0 x 10 x 3.0 = 120m³	1	120m³	
		3.0 x 20 x 4.0 = 240m³	1	240m³	
	Government Project	18.0 x 63.0 x 4.0 = 4536m³	1	4536m³	
	Jalan Bahar	7.0 x 7.0 x 3.0 = 147m³	1	147m³	
		2.5 x 5.0 x 2.0 = 25m³	1	25m³	

SUNG IL GRP SECTIONAL WATER TANK



SUNG IL GRP SECTIONAL WATER TANK



SUNG IL GRP SECTIONAL WATER TANK



30x50x3H (Dubai) - 4,500m³

SUNG IL GRP SECTIONAL WATER TANK



North Korea (Golf Club) - 1,000m³

SUNG IL GRP SECTIONAL WATER TANK



Bahrain - 12x25x3 (Partition Type)

SUNG IL GRP SECTIONAL WATER TANK



Iran Klerage Project - 4,500m³

SUNG IL GRP SECTIONAL WATER TANK



2013/02/20

Australia - 5.5MH Tank (with Cage)

SUNG IL GRP SECTIONAL WATER TANK



Qatar - World Trade Center



Singapore - MBS Hotel

SUNG IL GRP SECTIONAL WATER TANK



Thank you for your kind attention



- GRP Building Materials Company -

SUNG IL CO., LTD.

HEAD OFFICE : 1092-2, THOERAERI, HANLIMMYEON, GIMHAE CITY,
KYUNGNAM, KOREA

TEL : 82-55-346-1490~6

FAX : 82-55-346-1498

E-MAIL : sungil@sungilgrp.co.kr

WEB SITE : www.sungilgrp.co.kr

SEOUL OFFICE : TEL : 82-31-422-5006

FAX : 82-31-422-6005