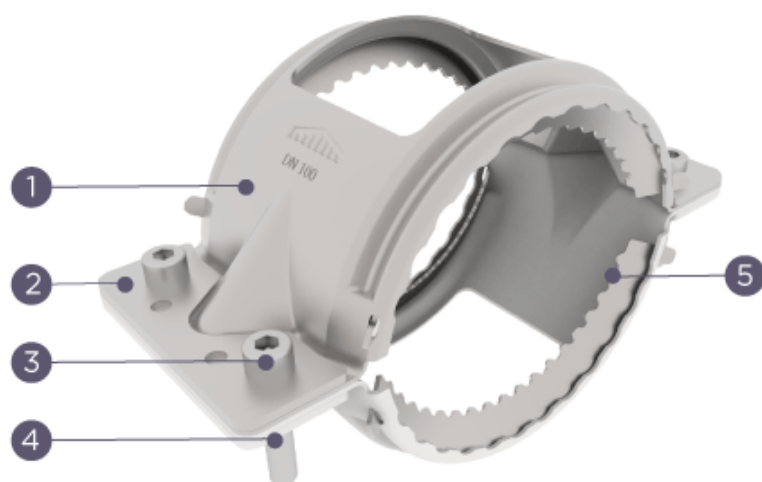


# GRIP COLLARS

## for couplings



- 1 Cage
- 2 Reinforcement plate
- 3 Screw
- 4 Set nuts
- 5 Teeth

### DESCRIPTION

**PAM GRIP collars** are recommended to **secure couplings** of bottom bends and branches under end thrust forces. They are used with standard couplings such as SMU PAM or PAM RAPID. End thrust forces can be exerted with changes of direction, gradient and specific components like branches and plugs, for example.

In these areas, the forces must be addressed to avoid any risk of the pipe system disconnecting or slipping with the installation of PAM GRIP collars.

### STANDARDS & APPROVALS

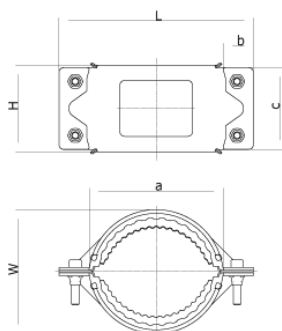
- Industry Product Standards:
  - NF EN877

### MATERIAL

- 1. Cage: galvanised steel
- 2. Reinforcement plate: coated steel
- 3. Screw: coated steel class 8.8
- 4. Set nuts: coated steel
- 5. Teeth: stainless steel with heat treatment

# GRIP COLLARS

## for couplings



DN	L	H	W	Wrench dimension	Weight	Product code
50	132	76	88	6	0.45	221261
75	155	78	105	6	0.53	221268
100	211	93	145	6	0.9	220750
125	229	93	165	6	1	221269
150	260	102	196	6	1.2	221270
200	316	118	252	8	1.7	221271
250	394	140	318	8	2.3	227039
300	447	140	371	8	2.5	227040

All dimensions are in mm and nominal weights are in kg

### Pressure resistance of PAM Rapid coupling + GRIP collar:

DN 50-125: 10 bar  
DN 150-200: 5 bar  
DN 250-300: 3 bar

This document is provided for information purposes only and our company reserves the right to modify the information contained herein at any time. Our company declines all responsibility in the event of the use or installation of materials that do not comply with the rules prescribed in this document as well as with the standards, the technical documents and the applicable professional standards. Any orders placed will be subject to our General Terms and Conditions of Sale, available on request. The drawings and/or images are the exclusive property of Saint-Gobain PAM and are confidential. They must not be reproduced or disclosed to any third party without written consent. They may only be used for the purpose for which they were issued and are returnable on request.

### Saint-Gobain PAM Bâtiment

21 avenue Camille Cavalier - BP 129 • 54705 • PONT-À-MOUSSON • France • Tel: +33 (0) 383 807 808 • Email: tcbatiment.sgpam@saint-gobain.com • www.pambuilding.com  
Société par action simplifiée au capital de 6 812 970,75€ • SIREN 799 283 882 • RCS NANCY