

# SlotTop & BrickSlot

Brochure **2023**

Invisible drainage systems



**CARAMONDANI**  
hellas

*You can depend on us<sup>®</sup>*



**MUFLE**





## SlotTop and BrickSlot, invisible and efficient drainage system

SlotTop combines design and the need of more performing drainage. It is perfect for those environments where it is necessary to respect the aesthetics and at the same time to have a high technical quality.

SlotTop can be considered an alternative to the traditional grating and it offers an aesthetic advantage thanks to the thin lines that perfectly integrate into the flooring and remains invisible in the architectural context.

SlotTops and BrickSlots are characterized by different fields of applications; balconies, terraces and private car parking, up to squares and fontaines.

### SlotTop with 4ALL H50 and 4ALL H92 channels

<b>Introduction SlotTop H20</b>		p.	5
<b>Introduction SlotTop H40</b>		p.	7
<b>Introduction SlotTop Tile</b>		p.	9
<b>SlotTop H20_4ALL H50</b>	Load class A15	p.	11
<b>SlotTop H40_4ALL H50</b>	Load class B125	p	12
<b>SlotTop H20_4ALL H92</b>	Load class A15	P.	13
<b>SlotTop H40_4ALL H92</b>	Load class B125	p	14
<b>SlotTop Tile</b>	Load class A15	p.	15
<b>Installation instruction</b>		p.	17

### BrickSlot H80 with EASY 100 and VIP 100 channels

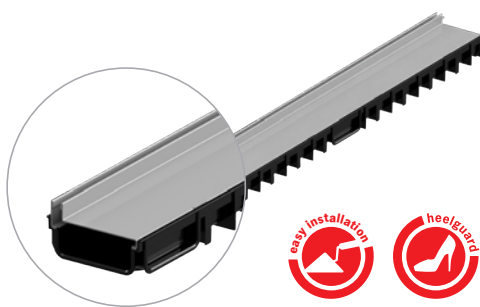
<b>Introduction BrickSlot H80</b>		p.	19
<b>Applications BrickSlot H80</b>		p.	21
<b>BrickSlot H80_EASY 100</b>	Load class C250	p.	23
<b>BrickSlot H80_VIP 100</b>	Load class C250	p.	24
<b>Installation instruction</b>		p.	25

# SlotTop H20

4ALL H50 and 4ALL H92



## SlotTop H20 Stainless steel



### Main Characteristics

- Drainage system composed by 4ALL channel and SlotTop H20 grating
- Stainless steel AISI 304
- Dimension of slot 10mm
- Suitable for surfaces paved with 15mm thick tiles max.
- Load class A15
- Inspection elements: linear, with right curve or with left curve
- SlotTop H20 grating and 4ALL H50 channel can create a 90° corner without interruption on the drainage line
- Certified in accordance to EN1433
- Total height 4ALL H50 e SlotTop H20 : 70mm
- Total height 4ALL H92 e SlotTop H20 : 112mm
- Easy to install
- Easy to transport

**SlotTop.** functional system and minimal design





## DESIGN TO MEET EVERY NEED

Thanks to its thin and continuous lines, it perfectly integrates with the flooring, making it almost invisible. A valid alternative to the traditional drainage gratings, but it also offers an important aesthetic advantage.

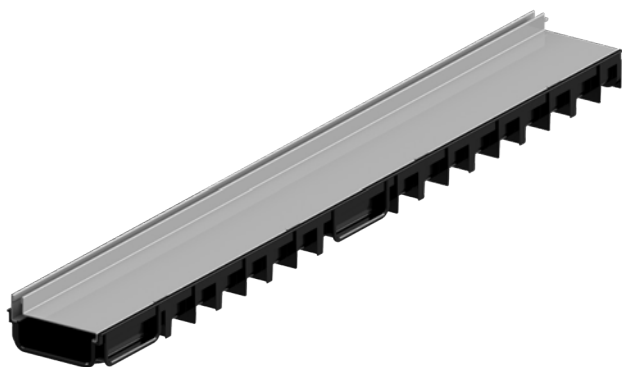
4ALL H50 channel and 4ALL H92 channel with SlotTop H20 is the perfect solution for installations such as terraces and balconies where the installation height is limited. Customer is more and more attracted to the design of the surrounding and needs to include drainage systems as an architectural design element, especially in own homes, gardens and terraces.

### 90° CORNER with SlotTop H20

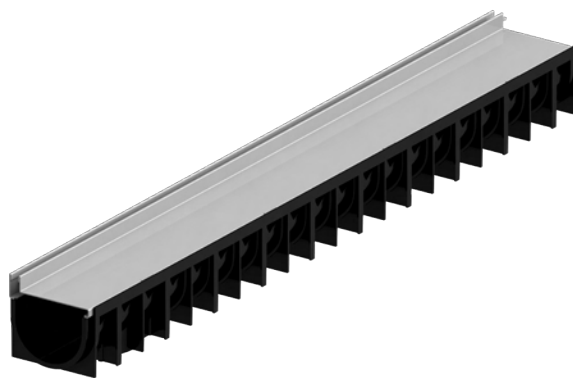
To create a 90° corner without interrupting the drainage line, the perfect solution is to install the SlotTop H20 with 4ALL H50 channel. This is possible thanks to the right and left inspection elements present in the range.



### SlotTop H20 and 4ALL H50



### SlotTop H20 and 4ALL H92



**SlotTop.** functional system and minimal design

# SlotTop H40

4ALL H50 and 4ALL H92



## SlotTop H40

Stainless steel  
Galvanized steel



## Main Characteristics

- Drainage system composed by 4ALL channel and SlotTop H40 grating
- Stainless steel AISI 304 and galvanized steel
- Dimension of slot 10mm
- Suitable for surfaces paved with high tiles (max 30mm thick)
- Load class B125
- Element of inspection: linear
- SlotTop H40 grating and 4ALL H50 channel can create a 90° corner without interruption on the drainage line
- Certified in accordance to EN 1433
- Total height 4ALL H50 and SlotTop H40 : 90mm
- Total height 4ALL H92 e SlotTop H40 : 132mm
- Easy to install
- Easy to carry

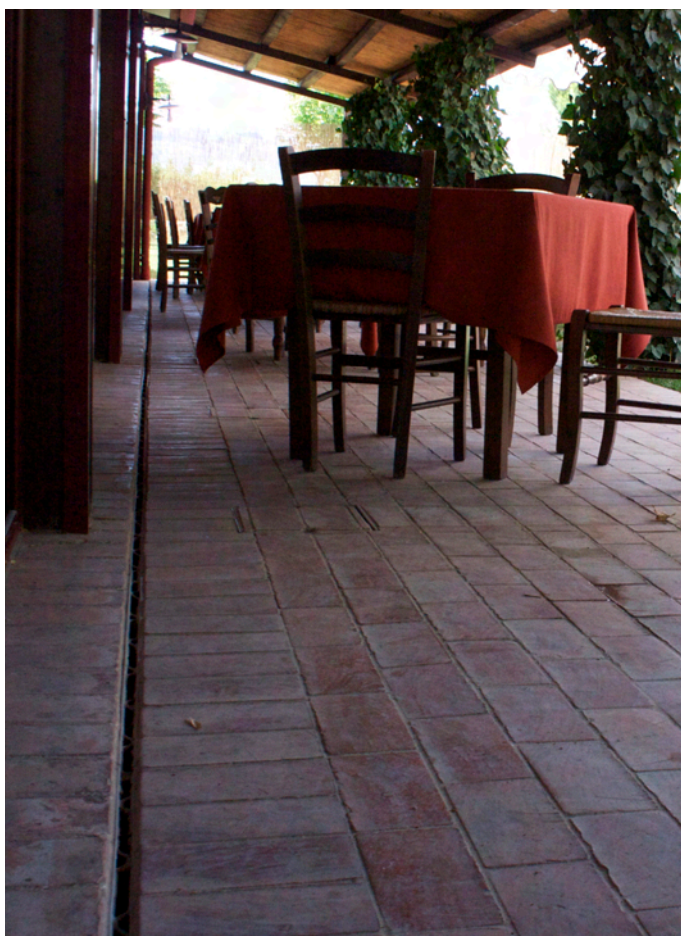
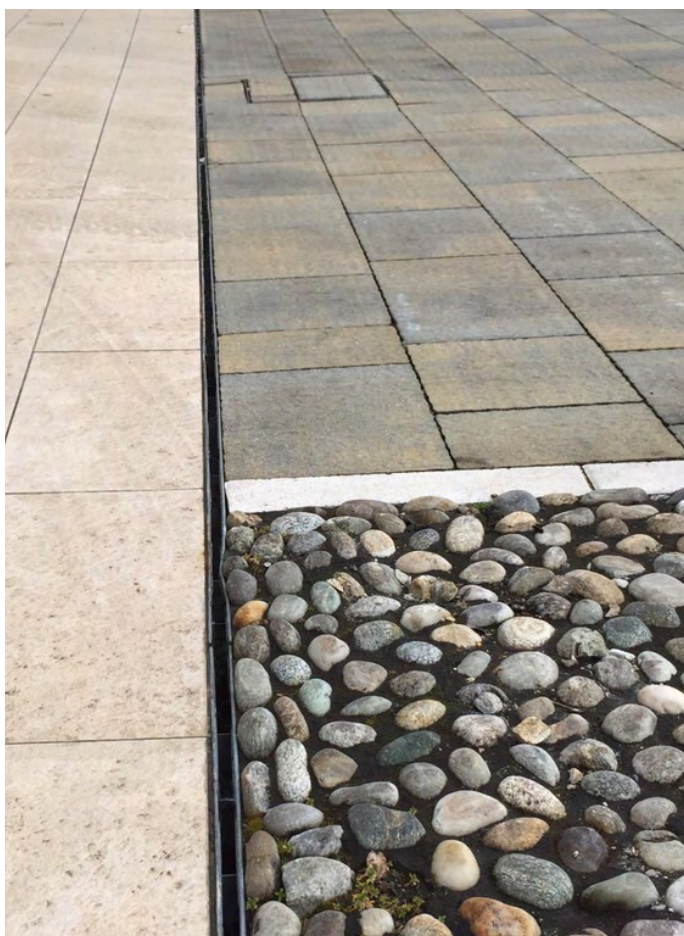


## DESIGN TO MEET EVERY NEED

4ALL H50 channel and 4ALL H92 channel with SlotTop H40 is the perfect solution for installations such as private car parks, driveways to private houses, gardens and garages. It is suitable for areas paved with thick tiles and stones.

For installation with high thickness, it is important to have a bigger support surface to guarantee safety, efficacy and quality at the same time.

SlotTop H40 is the perfect solution for these installations.



**SlotTop.** functional system and minimal design

# SlotTop Tile H20

4ALL H50

Solid top cover in stainless steel  
removable for channel cleaning



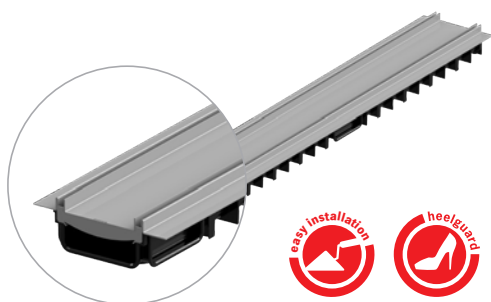
Frame in stainless steel  
with lateral wings for  
positioning the waterproof  
layer

Available for 4ALL H50 channel in PP-PE

Sealing joint. It is possible  
to connect the two  
channels and seal male/  
female connection.

## SlotTop Tile H20

Stainless steel



### Main Characteristics

- Drainage system composed by 4ALL channel and Tile grating
- Stainless steel AISI 304 (on request AISI 316)
- Dimension of double slot 8mm + 8mm
- Suitable for surfaces paved with low tiles and swimming pool area
- Load class A15
- The drainage system can be completely inspected and does not require additional inspectable elements
- It is possible to create corners without interrupting the drainage line using special corner pieces
- Total height 4ALL H50 and Tile : 67mm
- Easy to install
- Easy to carry

**SlotTop Tile.** functional system and minimal design



## DESIGN TO MEET EVERY NEED

Terraces, balconies, swimming pools are places with presence of water on the floors which, if not drained, stagnates and dangerously infiltrates the screeds. To prevent this, it is necessary to install a functional and safe drainage system which is able to collect water.

Also in this case, the design is very important as the drainage system is becoming more and more an aesthetical esigence and it needs to be integrated into architectural context and give to the project a uniform design.

Ideal for areas paved with thin tiles and bedding.

The system is suitable for new buildings and also for renovation.



Tile creates a double drainage line that is perfectly integrated with the flooring and at the same time prevents water stagnation and infiltration into the bedding.

All this happens only with two thin lines that provide uniformity to the drainage system.

Discreet, elegant and almost invisible, SlotTop Tile can be integrated into a terrace with its simple design. The drainage is invisible to the eyes but remains functional and the design is the main protagonist

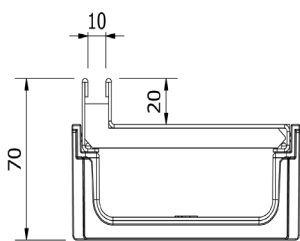
**SlotTop Tile.** functional system and minimal design

# SlotTop H20



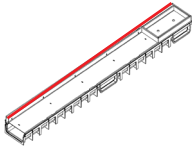

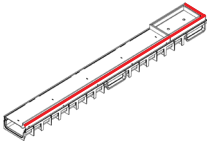
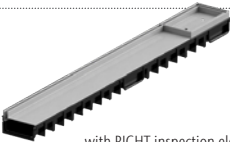
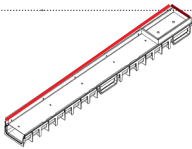
## with 4ALL H50 channel body

Product Information

- Channel PP-PE 4ALL H50 and SlotTop H20
- SlotTop H20 in stainless steel AISI 304 (on request AISI 316)
- Load class A15
- Slot dimension 10mm
- Elements of inspection: linear, right and left curve
- Total height 70mm



### SlotTop H20 with 4ALL H50 channel body

	Material	Dimensions			Slot	Weight	Artic. Num.
		Length	Width	Height			
		[mm]	[mm]	[mm]		[kg]	
	Stainless steel	1000	125	70	10	2,90	845310
 with inspection element 	Stainless steel	1000	125	70	10	3,10	845311
 with LEFT inspection element 	Stainless steel	1000	125	70	10	3,10	845313
 with RIGHT inspection element 	Stainless steel	1000	125	70	10	3,10	845312

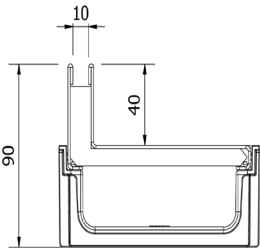


# SlotTop H40



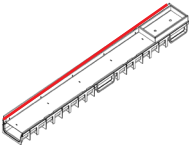

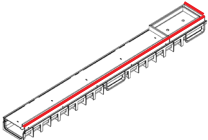

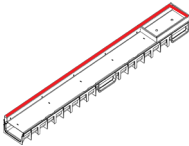
## with 4ALL H50 channel body

Product information

- Channel PP-PE 4ALL H50 and SlotTop H40
- SlotTop H40 in stainless steel or galvanized steel
- Load class B125
- Slot dimension 10mm
- Elements of inspection: linear, right and left curve
- Total height 90mm



### SlotTop H40 with 4ALL H50 channel body

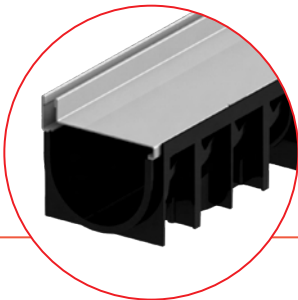
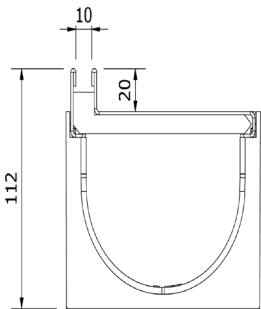
	Material	Dimensions			Slot	Weight	Artic. Num.
		Lenght	Width	Height			
		[mm]	[mm]	[mm]	[mm]	[kg]	
	Stainless steel	1000	125	90	10	3,50	845330
	Galvanized steel	1000	125	90	10	3,50	845320
 <div>with inspection element</div> 	Stainless steel	1000	125	90	10	3,90	845331
	Galvanized steel	1000	125	90	10	3,90	845321
 <div>with LEFT inspection element</div> 	Stainless steel	1000	125	90	10	3,90	845333
	Galvanized steel	1000	125	90	10	3,90	845323
 <div>with RIGHT inspection element</div> 	Stainless steel	1000	125	90	10	3,90	845332
	Galvanized steel	1000	125	90	10	3,90	845322

# SlotTop H20



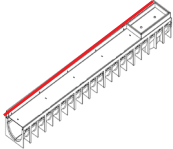
## with 4ALL H92 channel body

Product information

- Channel PP-PE 4ALL H92 and SlotTop H20
- SlotTop H20 in stainless steel AISI 304 (on request AISI 316)
- Load class A15
- Slot dimension 10mm
- Elements of inspection: linear
- Total height 112mm



### SlotTop H20 with 4ALL H92 channel

	Material	Dimensions			Slot	Weight	Artic. Num
		Lenght	Widht	Height			
		[mm]	[mm]	[mm]	[mm]	[kg]	
	Stainless steel	1000	120	112	10	3,00	613310
  <div>with inspection element</div>	Stainless steel	1000	120	112	10	3,30	613311

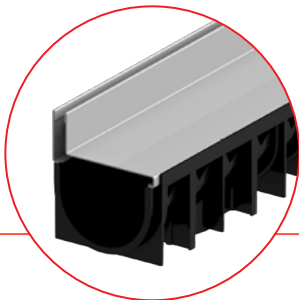
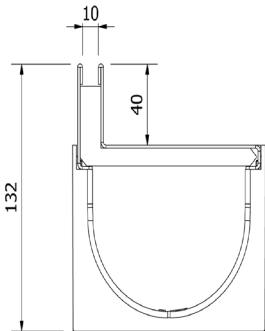


# SlotTop H40



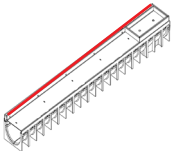
## with 4ALL H92 channel body

Product information

- Channel PP-PE 4ALL H92 and SlotTop H40
- SlotTop H40 in stainless steel or galvanized steel
- Load class B125
- Slot dimension 10mm
- Elements of inspection: linear
- Total height 112mm



### SlotTop H40 with 4ALL H92 channel

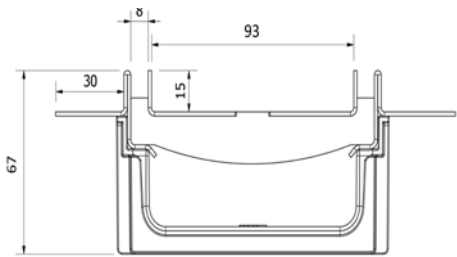
	Material	Dimensions			Slot	Weight	Artic. Num.
		Lenght	Widht	Height			
		[mm]	[mm]	[mm]	[mm]	[kg]	
	Stainless steel	1000	120	132	10	3,60	613330
	Galvanized steel	1000	120	132	10	3,60	613320
  <div>with inspection element</div>	Stainless steel	800	120	132	10	4,00	613331
	Galvanized steel	1000	120	132	10	4,00	613321

# SlotTop Tile



## with 4ALL H50 channel body

Product information

- Channel PP-PE 4ALL H50 and Tile
- SlotTop Tile in stainless steel AISI 304 (on request AISI 316)
- Load class A15
- Two slots dimension 8mm
- Total height 67mm



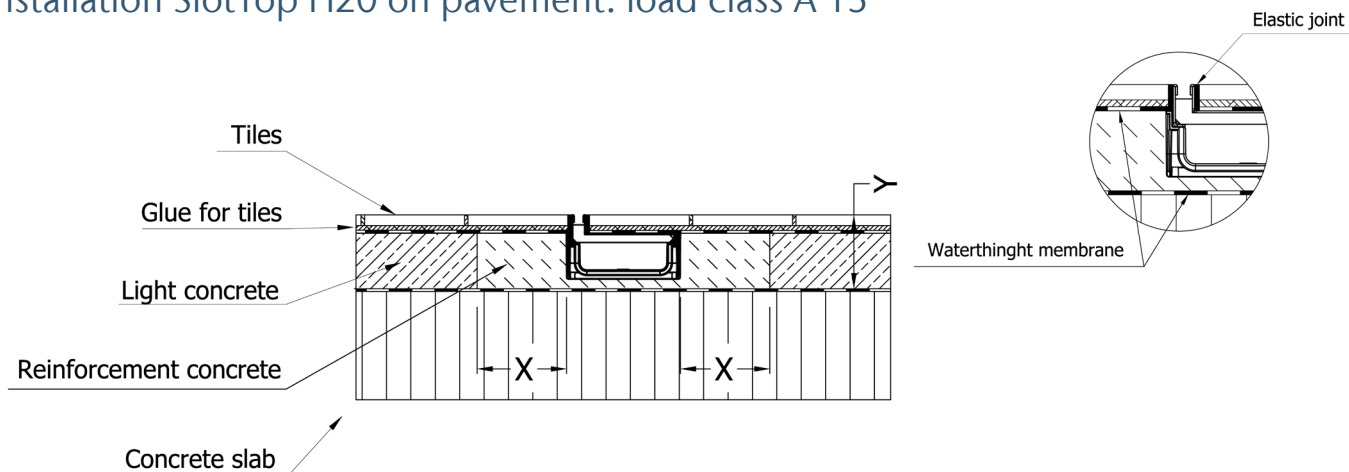
### SlotTop Tile and channel 4ALL H50

	Material	Dimensions			Slot	Weight	Artic. Num.
		Lenght	Width	Height			
		[mm]	[mm]	[mm]	[mm]	[kg]	
	Stainless steel	1000	125	67	8	4,30	845340
 <div>LEFT corner</div>	Stainless steel	1000X1125	125	67	8	8,70	845343
 <div>RIGHT corner</div>	Stainless steel	1000X1125	125	67	8	8,70	845342

# SlotTop H20 and H40

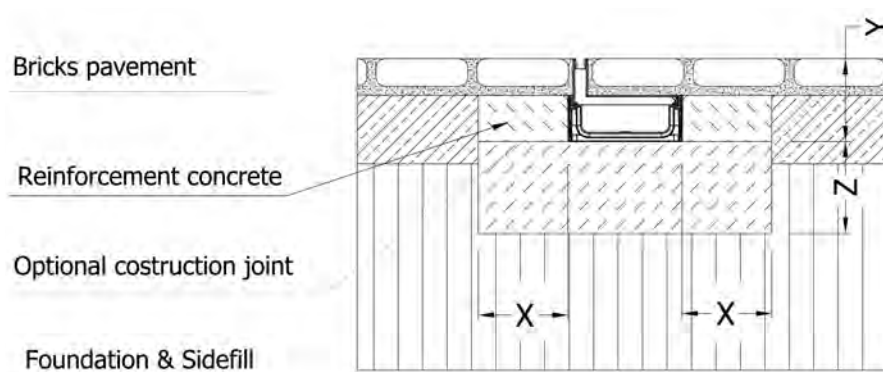
## Installation instruction

### Installation SlotTop H20 on pavement: load class A 15



Load Class	(ref. EN 1433)	A 15	B 125	C 250	D 400	E 600	F 900
Quality for Bedding & Haunch Concrete (Min)	(ref. EN 206-1)	C20/25					
Quality for Bedding & Haunch Concrete (Min) in area with frost cycle		C30/37 XF4					
Bedding Dimensions (Min)	X (Cm)	10					
	Y (Cm)	Height of the channel + height of the SlotTop H20					
	Z (Cm)	***					

### Installation SlotTop H40 on pavement: load class B125



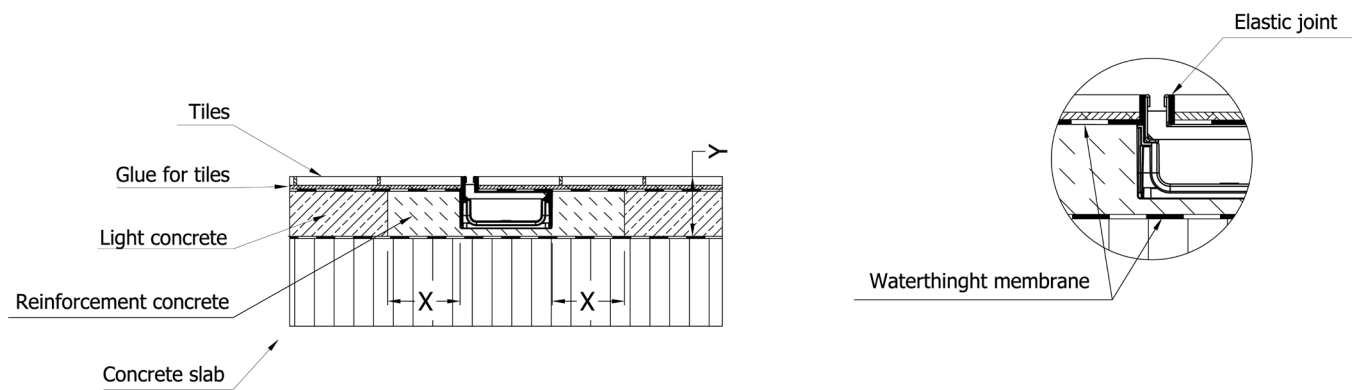
Load Class	(ref. EN 1433)	A 15	B 125	C 250	D 400	E 600	F 900
Quality for Bedding & Haunch Concrete (Min)	(ref. EN 206-1)		C20/25				
Quality for Bedding & Haunch Concrete (Min) in area with frost cycle			C30/37 XF4				
Bedding Dimensions (Min)	X (Cm)		10				
	Y (Cm)	Height of the channel + height of the SlotTop H40					
	Z (Cm)		***				



# SlotTop TileH2O

## Installation instruction

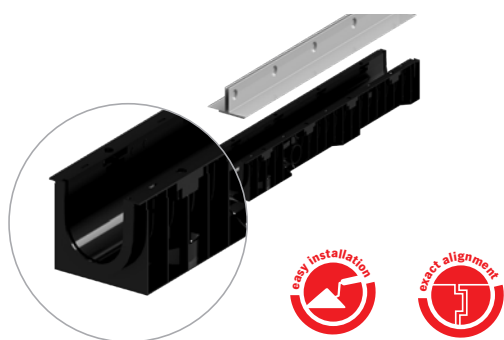
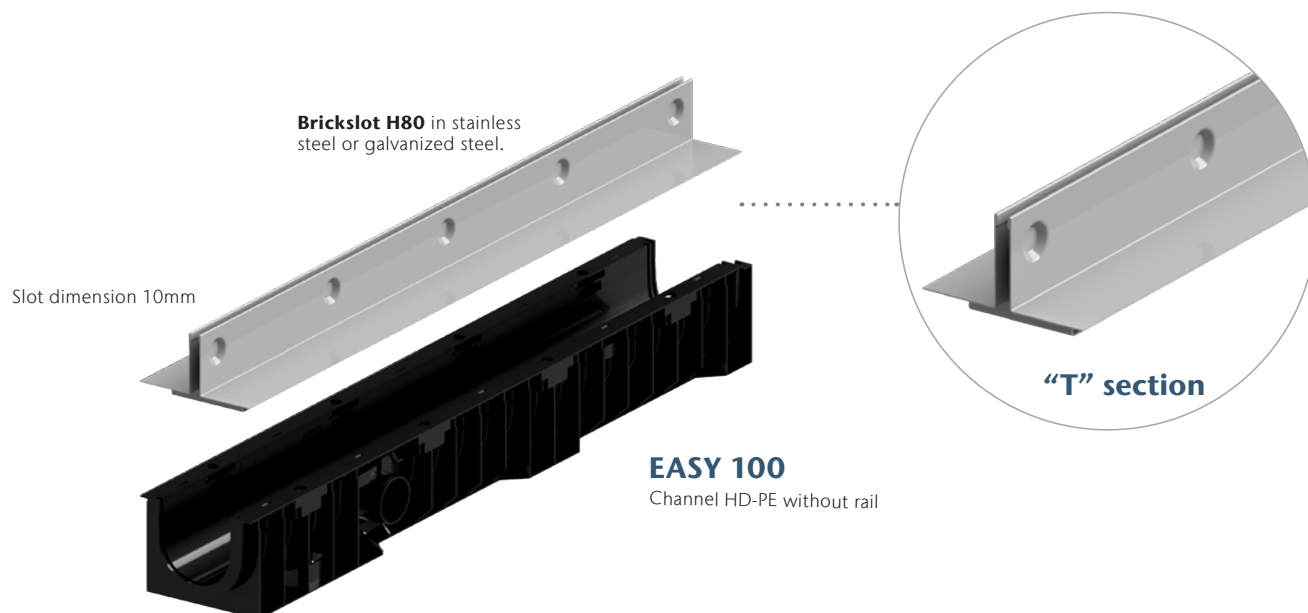
### Installation Tile on pavement: load class A 15



Load Class	(ref. EN 1433)	A 15	B 125	C 250	D 400	E 600	F 900
Quality for Bedding & Haunch Concrete (Min)	(ref. EN 206-1)	C20/25					
Quality for Bedding & Haunch Concrete (Min) in area with frost cycle		C30/37 XF4					
Bedding Dimensions (Min)	X (Cm)	10					
	Y (Cm)	Height of the channel + height of the Tile grating					
	Z (Cm)	***					

# BrickSlot H80 "T" section

## EASY 100 channel



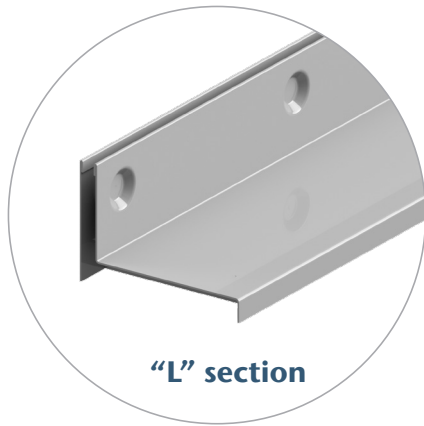
BrickSlot H80 "T" section is designed for **EASY 100** channel made of HD-PE with no rails. The absence of the rail ensures that the grating completely covers the channel. BrickSlot H80 "T" section can be installed on Easy 100 in all its internal heights: 55, 80, 100 and 160mm.

### Main Characteristics

- "T" section made in stainless steel AISI 304 or in galvanized steel
- Dimension of slot 10mm
- Suitable for surfaces paved with block stones (60-70mm height)
- Load class C250
- The drainage system can be completely inspected thanks to inspection element
- The inspection element can be installed on Easy 100 channel or sump unit
- Certified in accordance to EN 1433

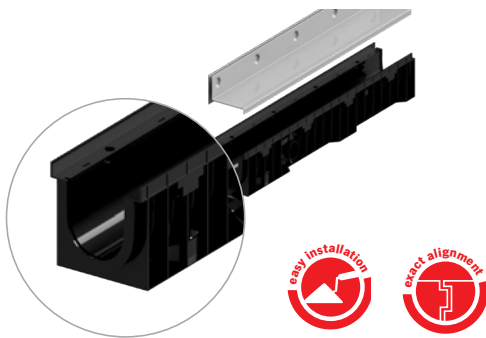
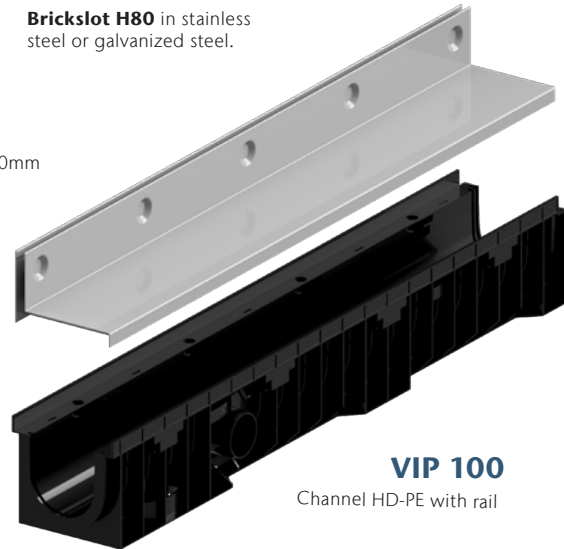
# BrickSlot H80 “L” section

VIP 100 channel



Slot dimension 10mm

BrickSlot H80 in stainless steel or galvanized steel.



BrickSlot H80 “L” section is designed for **VIP 100** channel made of HD-PE with an inbuilt rail that ensures protection on the gratings. BrickSlot H80 “L” section can be installed on Vip 100 in all its internal heights: 55, 80, 100 and 160mm.

## Main Characteristics

- “L” section made in stainless steel AISI 304 or in galvanized steel
- Suitable for installation near walls, fences etc.
- Dimension of slot 10mm
- Suitable for surfaces paved with block stones (60-70mm height)
- Load class C250
- The drainage system can be completely inspected thanks to inspection element
- The inspection element can be installed on Vip 100 channel or on sump unit
- Certified in accordance to EN 1433
- Easy to install

**BrickSlot.** design for professional drainage

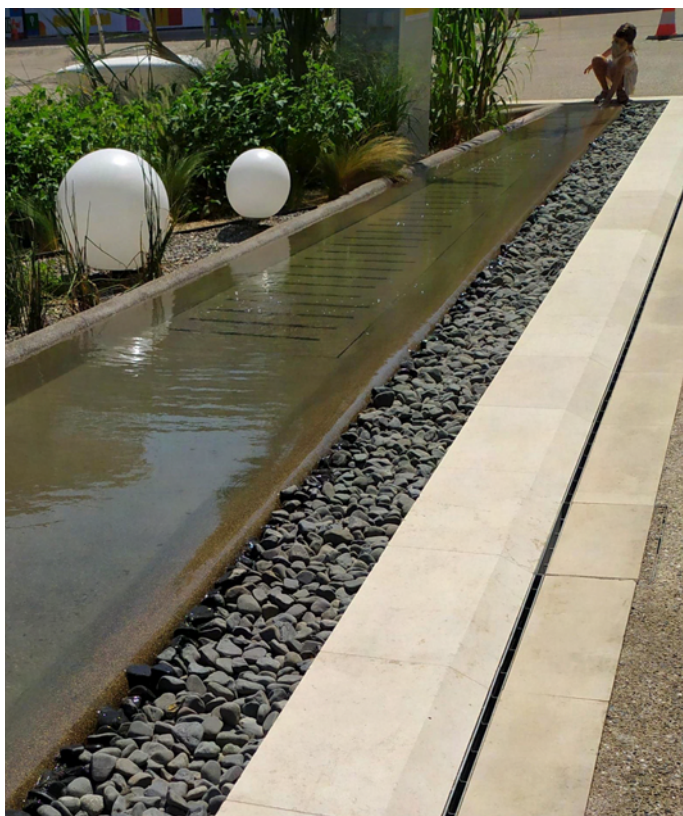


The drainage system with the slot trap represents one of the possible types of water drainage and can be considered a valid alternative to the traditional gratings.

Brickslot H80 can be installed on EASY 100 and VIP 100 channels.

These two channels together with Brickslot H80 create a drainage system that appears to be a thin continuous lines perfectly integrated into the flooring, making it invisible in the architectural context or in urban landscape.

Ideal for areas paved with stones, concrete, self locking, all materials used in squares, fountains, private roads and places with higher floors (up to 70mm)



Fountains are increasingly subject to redevelopment and renovation, with attention to design but also respecting the water cycle, from its collection to its reuse. Thanks to Brickslot H80 drainage system is possible to ensure an optimal drainage performance without ignoring the design.

Brickslot H80 can create angles and curves not only linear system. It is designed to respect the identity of the space and area to be redeveloped.





## APPLICATIONS

The drainage system with slot trap offers new opportunities for the design of open spaces and prestigious architectural contexts. Not only in private homes but also in public spaces, such as squares, design is an increasingly important element.

Minimalism is necessary when you want to respect the context but you can't take away the functionality and efficiency of the drainage system. With BrickSlot H80, architects and designer can set their creativity free counting on the guarantee of quality and safety.



Squares have always been meeting places and they are part of a context with historical buildings and it is not easy to do a conservative intervention. With Brickslot H80 is possible to do it thanks to its discreet and elegant linearity.

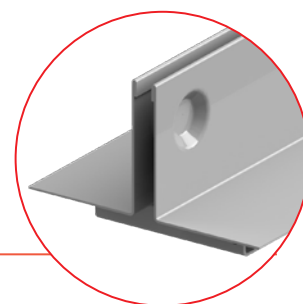
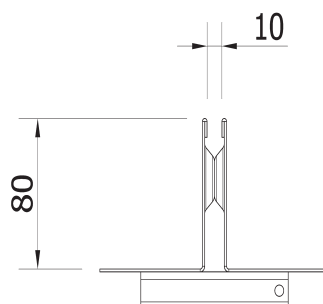


Benches, alleys, green areas, all places for people to meet and interact, where the aesthetic element becomes fundamental and where the quality of the materials used is important. Brickslot H80 combines these two aspects, design and quality.

# BrickSlot H80 "T" section with EASY 100 channel body

## Product information

- "T" section in stainless steel and galvanized steel
- Load class C250
- Slot dimension 10mm
- Inspection element 500mm



## BrickSlot H80 "T" section

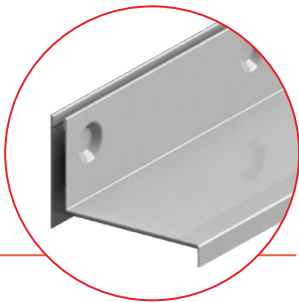
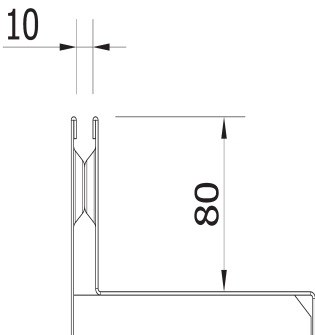
	Material	Dimension			Slot	Class Load	Weight	Artic. Num.	Price list
		Lenght	Weight	Height					
		[mm]	[mm]	[mm]	[mm]		[kg]		euro
	Stainless steel	1000	154	80	10	C250	4,38	503603	
	Galvanized steel	1000	154	80	10	C250	4,38	503600	
	Stainless steel	500	154	80	10	C250	2,30	503604	
	Galvanized steel	500	154	80	10	C250	2,30	503601	
 inspection element	Stainless steel	500	154	80	10	C250	4,88	503605	
	Galvanized steel	500	154	80	10	C250	4,88	503602	





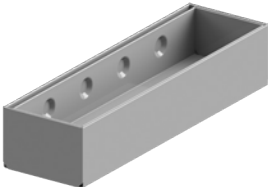
# BrickSlot H80 “L” section with EASY 100 channel body

Product information

- “L” section in stainless steel and galvanized steel
- Load class C250
- Slot dimension 10mm
- Inspection element 500mm



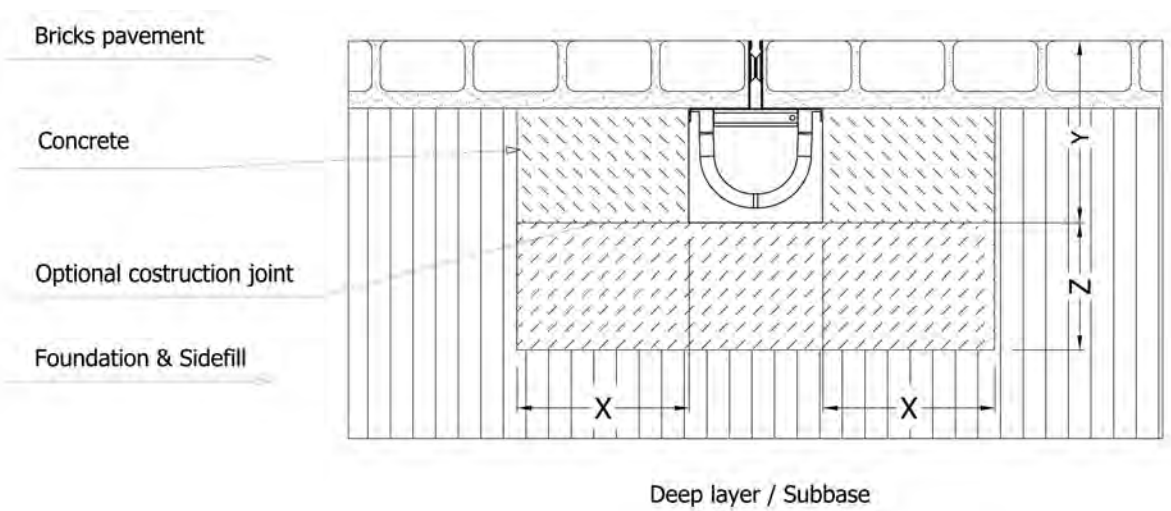
## BrickSlot H80 “L” section

	Material	Dimension			Slot	Class Load	Weight	Artic. Num.	Price list
		Lenght	Weight	Height					
		[mm]	[mm]	[mm]	[mm]		[kg]		euro
	Stainless steel	1000	147	80	10	C250	4,72	503703	
	Galvanized steel	1000	147	80	10	C250	4,72	503700	
	Stainless steel	500	147	80	10	C250	2,46	503704	
	Galvanized steel	500	147	80	10	C250	2,46	503701	
 inspection element	Stainless steel	500	147	80	10	C250	4,50	503705	
	Galvanized steel	500	147	80	10	C250	4,50	503702	

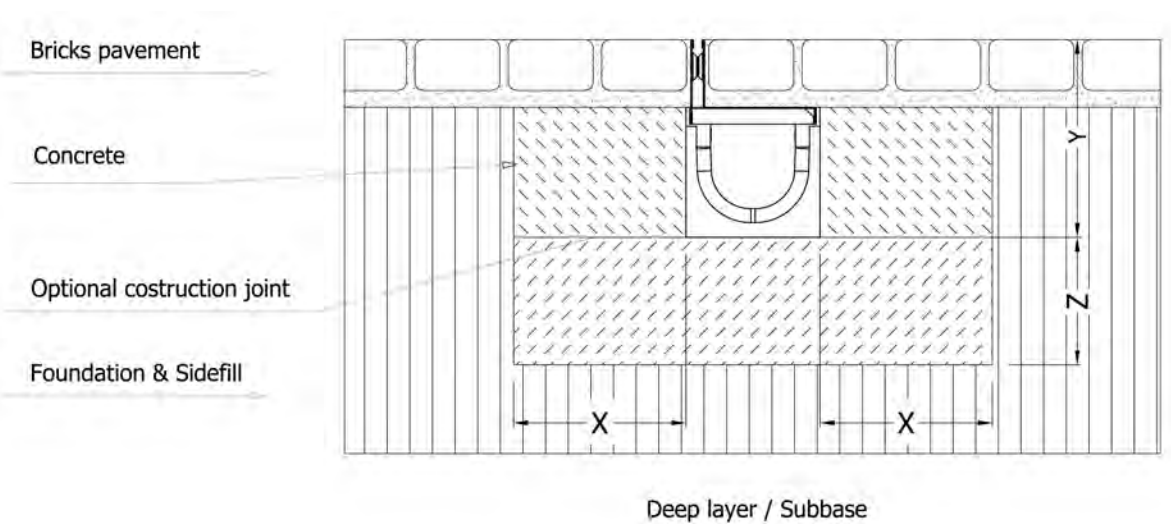
# BrickSlot H80

## Installation instruction

### Installation Brickslot H80 “T” section on pavement: load class C 250



### Installation Brickslot H80 “L” section on pavement: load class C 250



Load Class	(ref. EN 1433)	A 15	B 125	C 250	D 400	E 600	F 900
Quality for Bedding & Haunch Concrete (Min)	(ref. EN 206-1)			C25/30			
Quality for Bedding & Haunch Concrete (Min) in area with frost cycle				C30/37 XF4			
Bedding Dimensions (Min)	X (Cm)			15			
	Y (Cm)	Height of the channel + height of the Brickslot H80					
	Z (Cm)			15			

It is not recommended to install it on road crossings with high and fast traffic



*You can depend on us®*

**CARAMONDANI**  
**hellas**

5 kountouriotou Str., 151 27 Melissia  
T +30 210 8034036  
info@caramondani.gr  
www.caramondani.gr



**MEMBER OF CARAMONDANI GROUP**